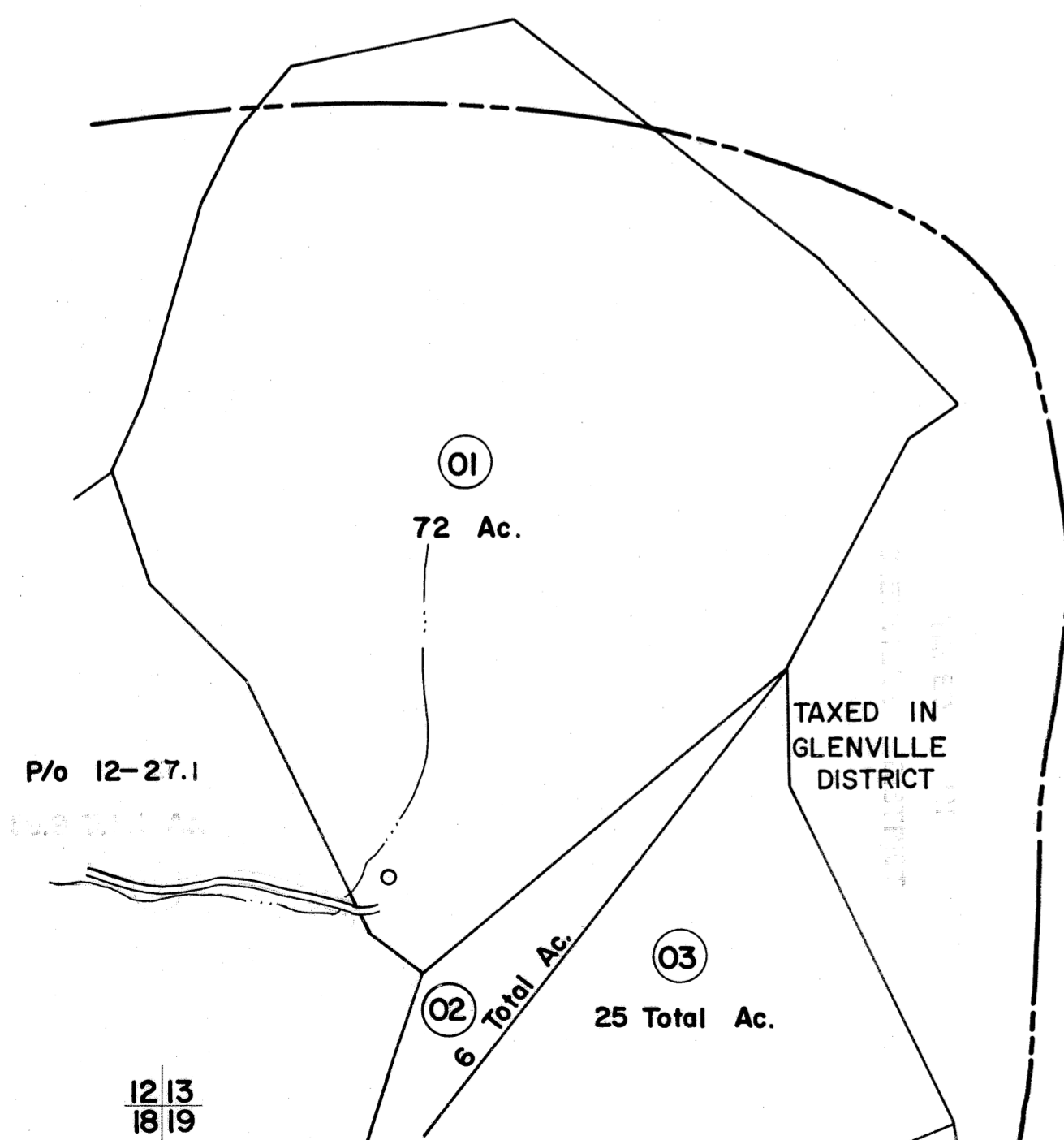


GLENVILLE DISTRICT



FOR TAX PURPOSES ONLY

Prepared by
L. ROBERT KIMBALL
Consulting Engineer
Ebensburg, Pennsylvania

Legend

Property line	—————	Original lot line
Edge of pavement or roadway	-----	Deed lot number in parenthesis	(15)
Corporation line	-----	Parcel or index number in circle	02
District line	-----	Improvement	o
County line	-----	Railroad	+

Revisions

No.	Description	Date	By
1	SL6 INC. 4/13/99 DSW		
2			
3			
4			
5			
6			
7			
8			

STATE OF WEST VIRGINIA
COUNTY OF GILMER
Office of Assessor

CENTER DISTRICT
SHEET 13

Date, Aerial Photography: MAY, 1961 Date, Map: APRIL, 1963
Photo No: 249 ; 251 Scale: 1"=400'