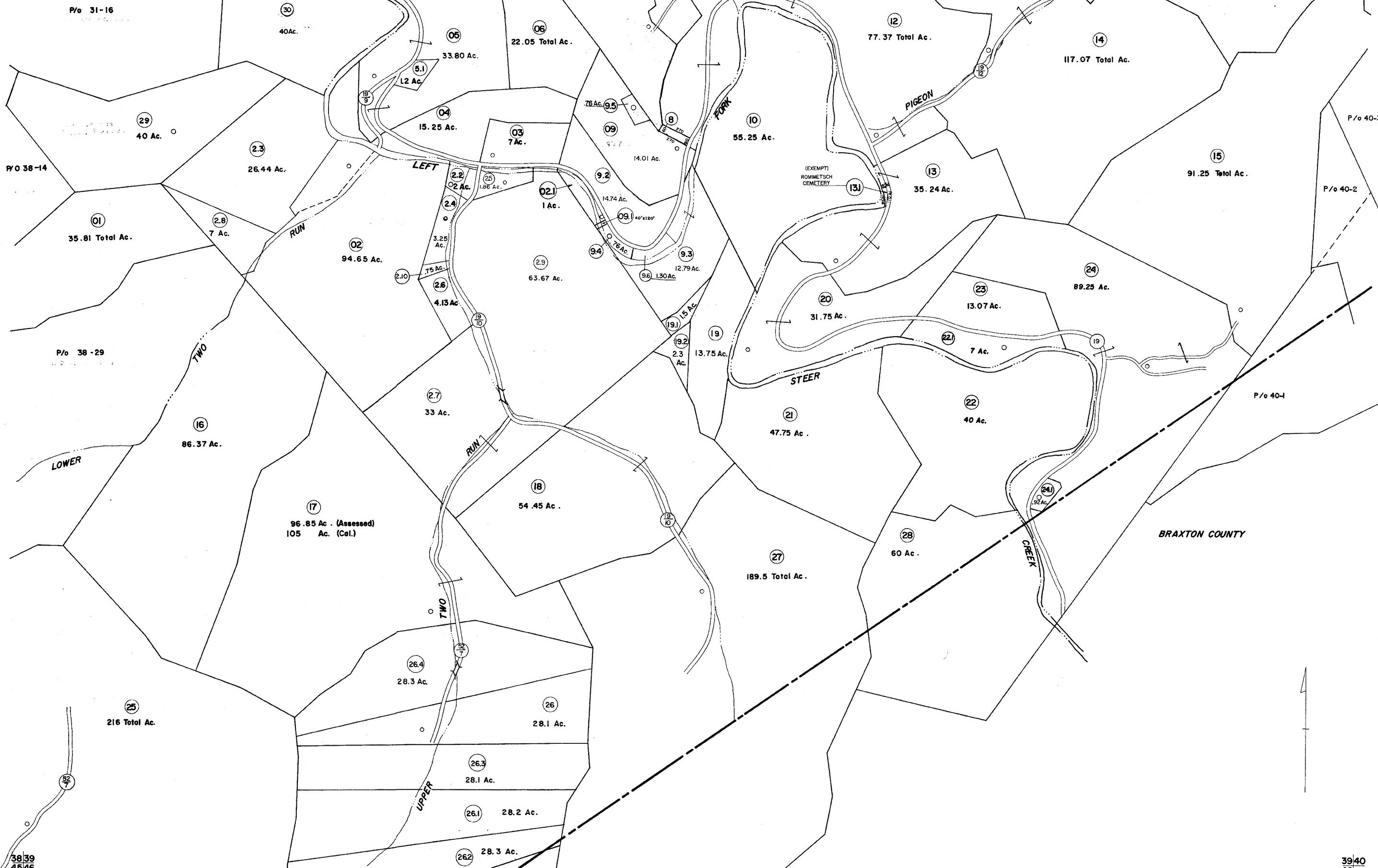


3031
3839

3132
3940



3839
4546

3940
46

FOR TAX PURPOSES ONLY

Prepared by
L. ROBERT KIMBALL
Consulting Engineer
Ebensburg, Pennsylvania

Legend	
Property line	Original lot line
Edge of pavement or roadway	Dead lot number in parenthesis (15)
Corporation line	Parcel or index number in circle (01)
District line	Improvement
County line	Railroad

Revisions			
1	REVISED 11/26/63	2	Revised to 7-1-87
3	REVISED TO JULY 1965 pas	10	0815 1-12-91 NGK
4	10-27-75 DS	11	0815 4/12/92 NK
5	Revised to 7-81	12	O.G.I.S. 4-1-96
6	REV TO 7-1-82	13	SLS INC.-J.W.M. 4/97
7	7/1/85	14	ESI 5/19/01 REK
8	Revised to 7-1-87	15	ESI 5/2/02 REK
		16	6-7-04 HBS

STATE OF WEST VIRGINIA
COUNTY OF GILMER
Office of Assessor

CENTER DISTRICT
SHEET 39

Date, Aerial Photography: MAY, 1961
Photo No: 242 ; 322

Date, Map: APRIL, 1963
Scale: 1" = 400'