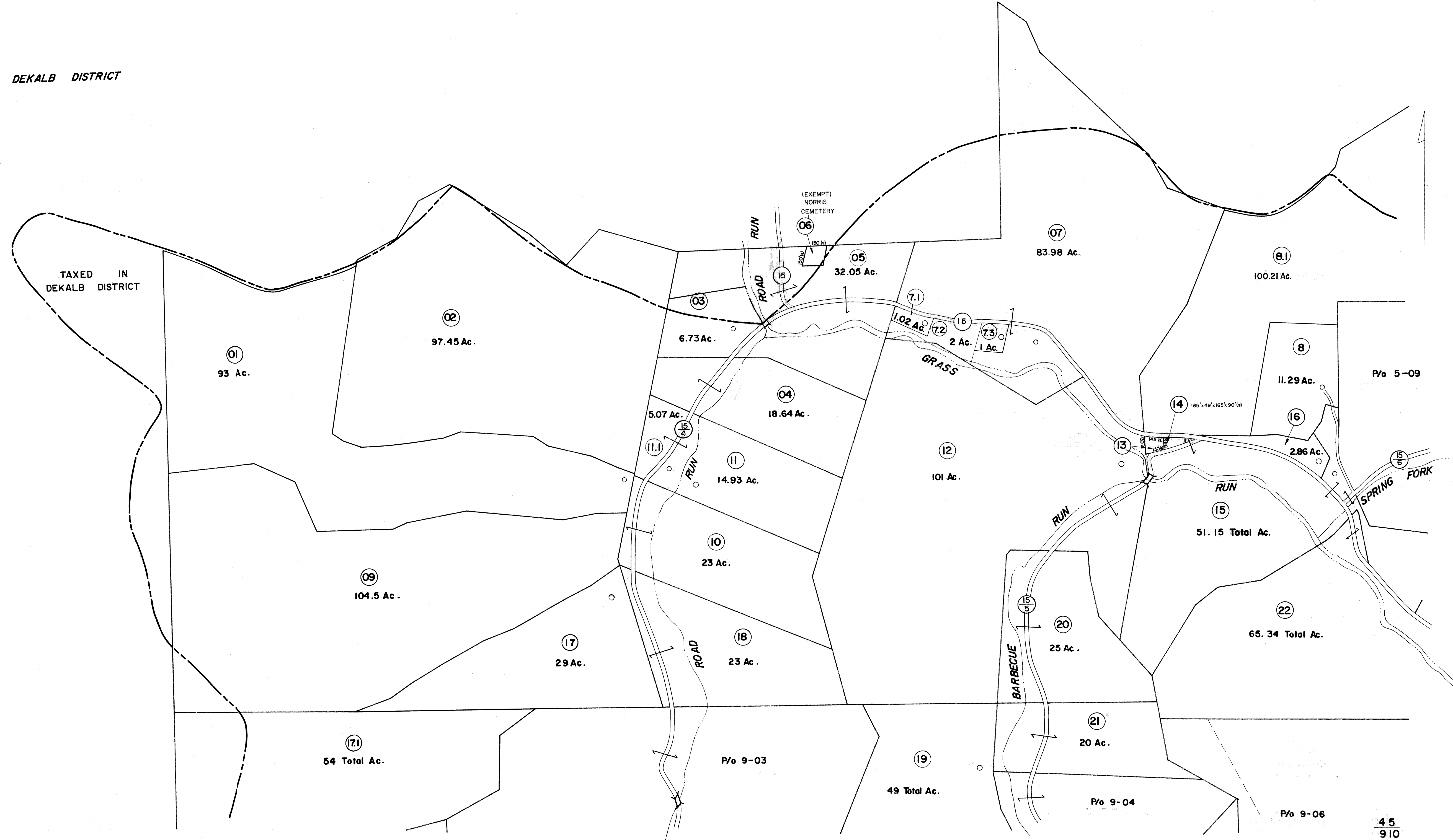


DEKALB DISTRICT



FOR TAX PURPOSES ONLY

Prepared by
L. ROBERT KIMBALL
 Consulting Engineer
 Ebensburg, Pennsylvania

Legend	
Property line	Original lot line
Edge of pavement or roadway	Deed lot number in parenthesis (15)
Corporation line	Parcel or index number in circle (15)
District line	Improvement
County line	Railroad

Revisions	
1	REVISED 11/26/63
2	11119174 J.C.
3	10-23-75 DS
4	Revised to 7-81
5	Revised to 7-1-84
6	Revised to 7-1-87
7	OGIS 4/11/92 NK
8	OGIS 4-19-93 JEB
9	ESI 5/15/01
10	
11	
12	
13	
14	
15	
16	
17	REK
18	
19	
20	
21	
22	
23	
24	

STATE OF WEST VIRGINIA
 COUNTY OF GILMER
 Office of Assessor

CENTER DISTRICT
 SHEET 04

Date, Aerial Photography: MAY, 1961
 Photo No: 192; 194

Date, Map: APRIL, 1963
 Scale: 1"=400'