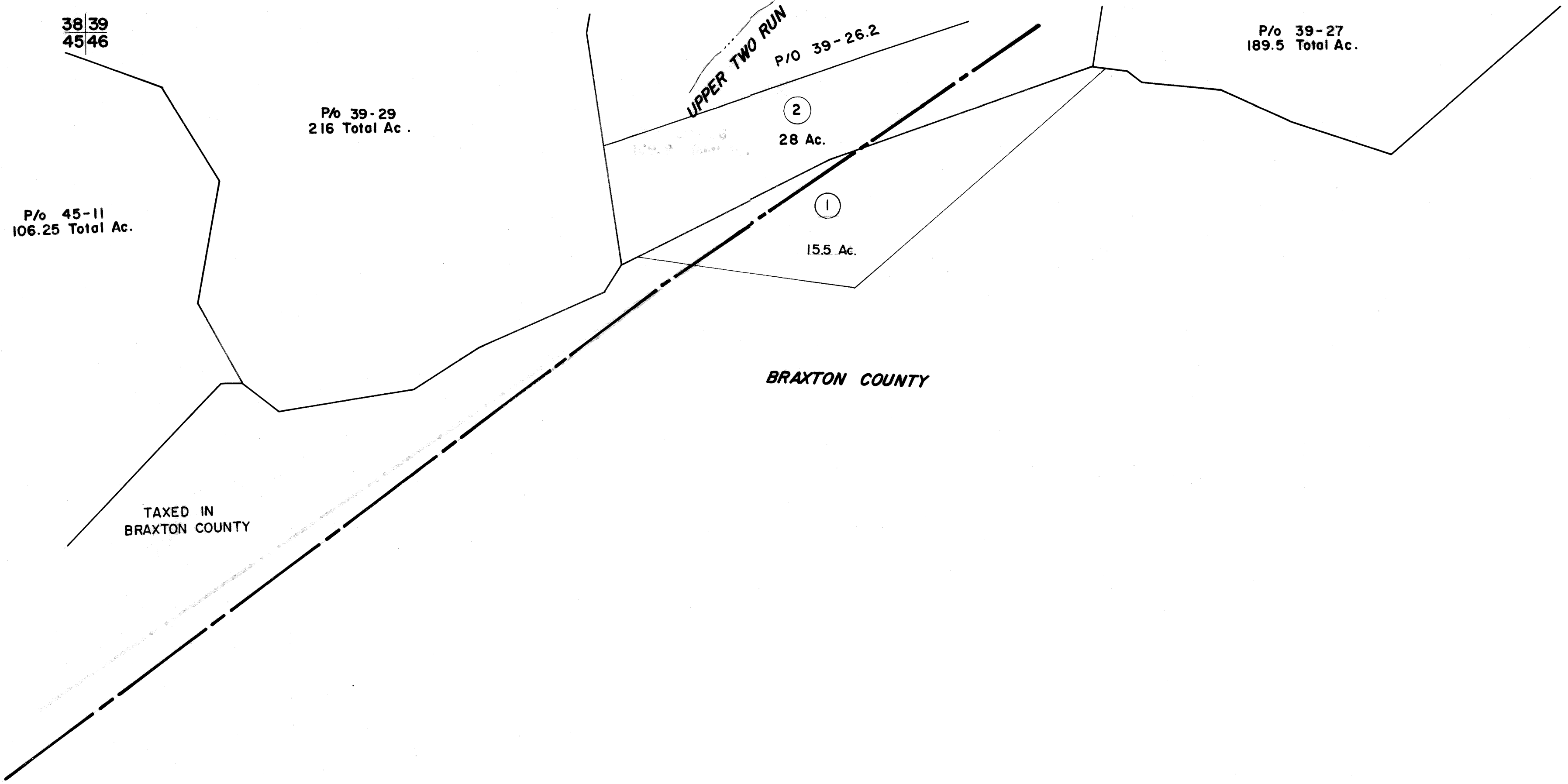


39 39
45 46

39 40
46



45 46
50

46



FOR TAX PURPOSES ONLY

Prepared by
L. ROBERT KIMBALL
Consulting Engineer
 Ebensburg, Pennsylvania

Legend	
Property line	—————
Edge of pavement or roadway	-----
Corporation line
District line	-----
County line	-----
Original lot line
Deed lot number in parenthesis	(15)
Parcel or index number in circle	(2)
Improvement	o
Railroad	+++++

Revisions			
1	Revised to 7-81	9	17
2		10	18
3		11	19
4		12	20
5		13	21
6		14	22
7		15	23
8		16	24

STATE OF WEST VIRGINIA
 COUNTY OF GILMER
 Office of Assessor

**CENTER DISTRICT
 SHEET 46**

Date, Aerial Photography: MAY, 1961
 Photo No: 322

Date, Map:
 Scale: 1"=400'