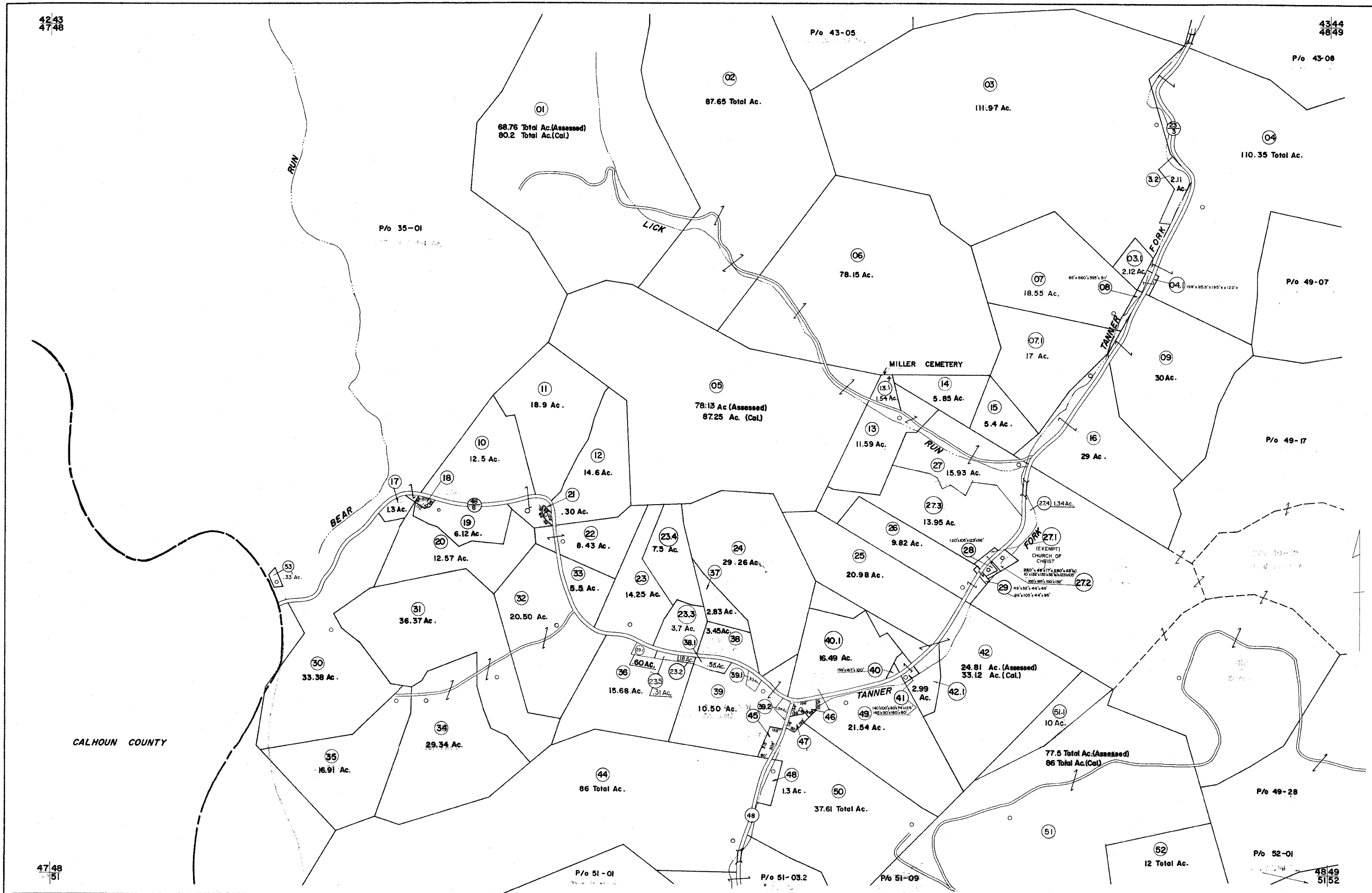


4243
4748

4344
4849



4748
51

4849
5152

FOR TAX PURPOSES ONLY

Prepared by
L. ROBERT KIMBALL
Consulting Engineer
Ebensburg, Pennsylvania

Legend	
Property line	Original lot line
Edge of pavement or roadway	Deed lot number in parenthesis
Corporation line	Parcel or Index number in date
District line	Improvement
County line	Railroad

Revisions			
1	REVISED 11/26/63	0818	4-95
2	REVISED TO JULY 1965 Pgs	0618	4-1-95
3	11/18/74	513 INC.	4/15/99 DSW
4	10-27-75 DS	ES1	4-27-00 REK
5	8-76 PW	6/9/06	SBH
6	Revised to 7-81	5/18/08	SBH
7	REV TO 7-1-82	NCS	5/25/09
8	Revised to 7-1-82		

STATE OF WEST VIRGINIA
COUNTY OF GILMER
Office of Assessor

CENTER DISTRICT
SHEET 48

Date, Aerial Photography: MAY, 1961
Date, Map: APRIL, 1963
Photo No: 130
Scale: 1"=400'