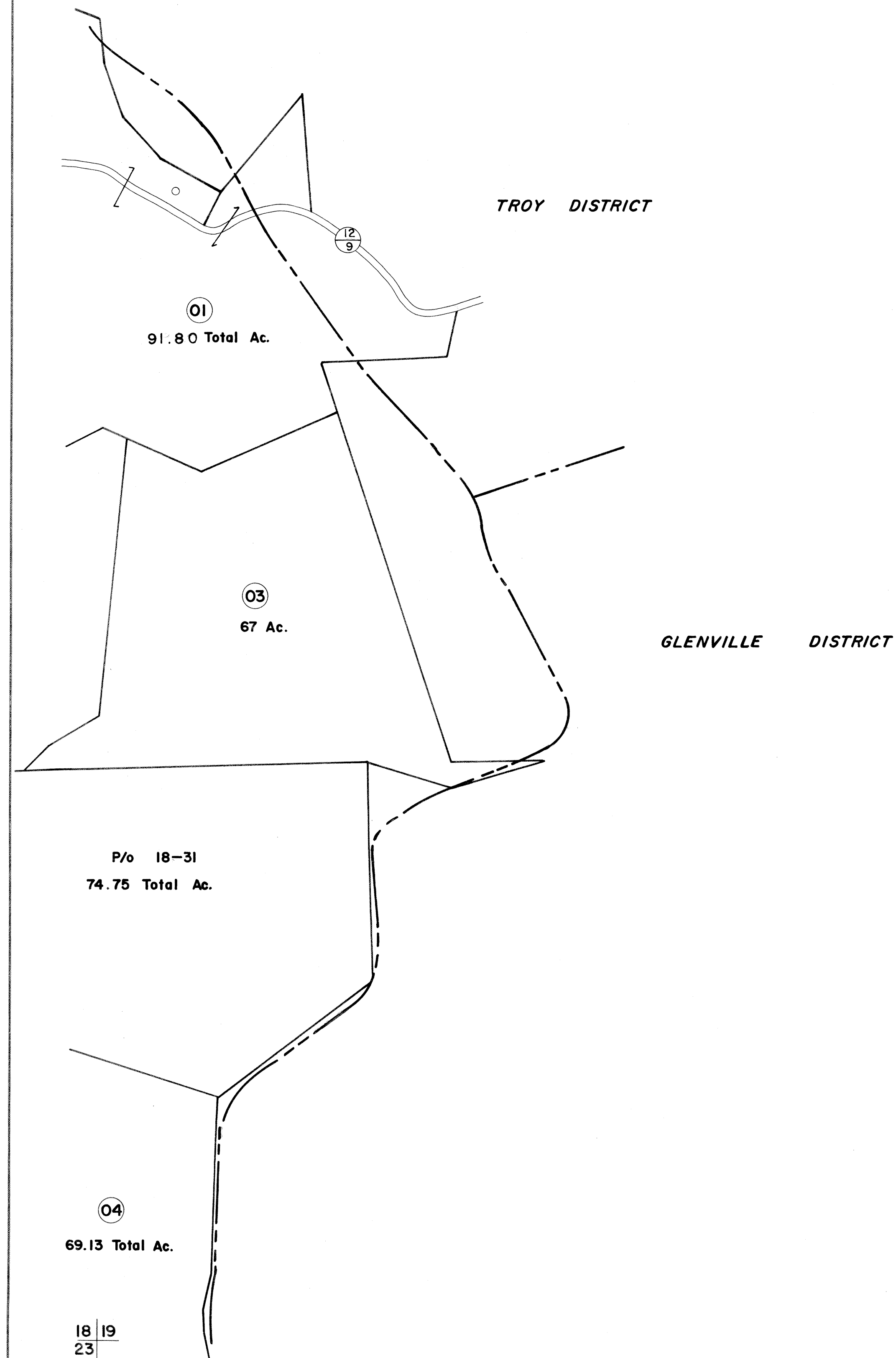


13
18 19



18 19
23

FOR TAX PURPOSES ONLY

Prepared by
L. ROBERT KIMBALL
Consulting Engineer
Ebensburg, Pennsylvania

Legend

Property line	-----	Original lot line	-----
Edge of pavement or roadway	-----	Deed lot number in parenthesis	(15)
Corporation line	-----	Parcel or index number in circle	(12/9)
District line	-----	Improvement	o
County line	-----	Railroad	+++++

Revisions

1	REVISED 11/18/63	9		17	
2	Revised to T-81	10		18	
3		11		19	
4		12		20	
5		13		21	
6		14		22	
7		15		23	
8		16		24	

STATE OF WEST VIRGINIA
COUNTY OF GILMER
Office of Assessor

DEKALB DISTRICT
SHEET 19

Date, Aerial Photography: MAY, 1961 Date, Map: DEC., 1962
Photo No: 233 Scale: 1" = 400'