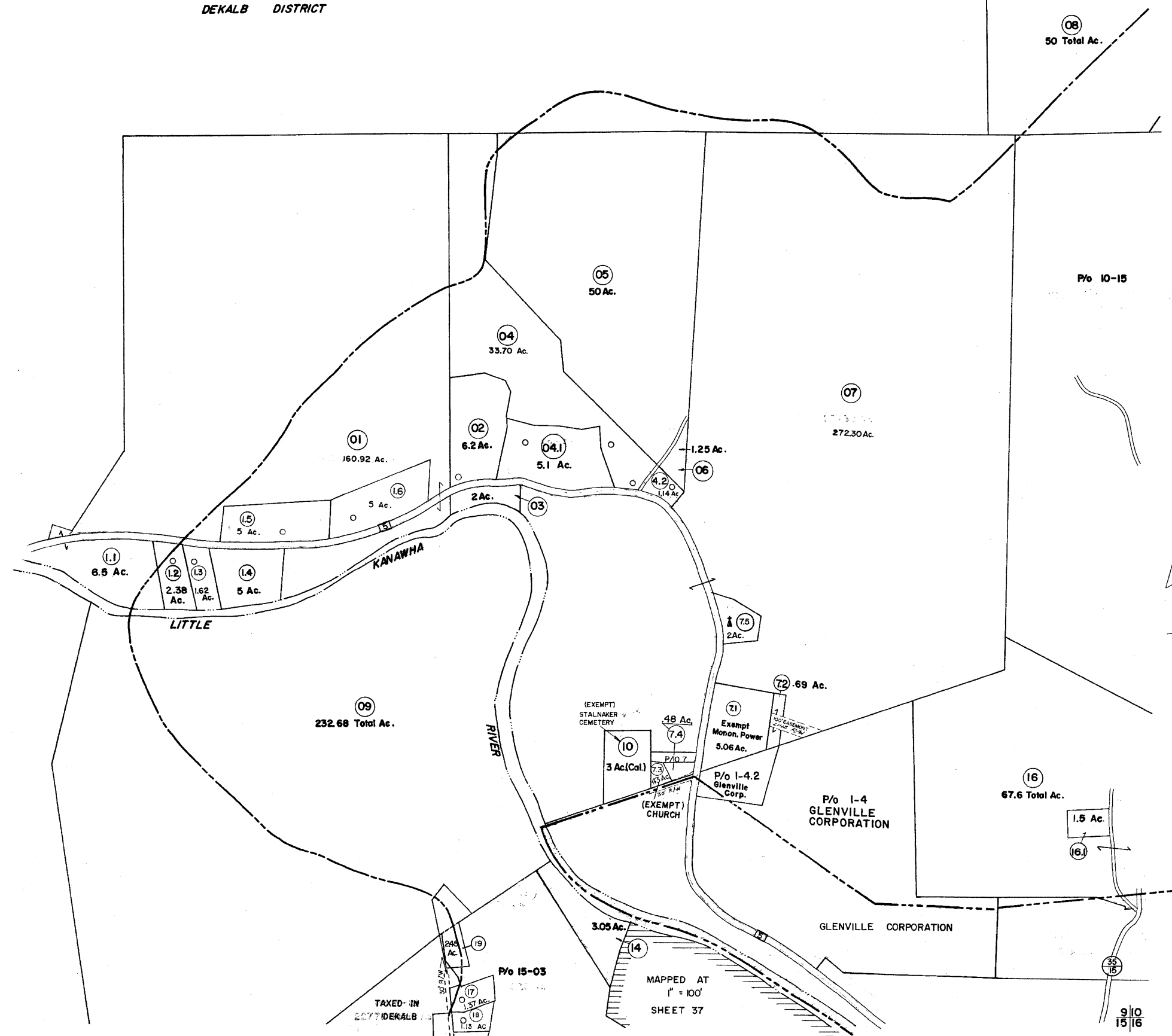


DEKALB DISTRICT



FOR TAX PURPOSES ONLY

Prepared by
L. ROBERT KIMBALL
 Consulting Engineer
 Ebensburg, Pennsylvania

Legend

Property line	-----	Original lot line	-----
Edge of pavement or roadway	-----	Deed lot number in parenthesis	(15)
Corporation line	-----	Parcel or index number in circle	(15)
District line	-----	Improvement	○
County line	-----	Railroad	+++++

Revisions

No.	Date	Description	By	Checked	Date	By
1	REVISD 11/23/93				5/18/08	S.B.H.
2	Golden 11-18-74	T.G.	OGIS	NK	5/25/09	S.B.H.
3	10-30-75	DS	OGIS	JEB		
4	04-20-77	SRJ	OGIS	SAJ		
5	JULY 1981	TRL	OGIS	JEB		
6	REV TO 7-1-82	NCS	SLS INC	DSW		
7	7/1/84	R.B.		S.B.H.		
8	7/1/85	R.B.		H.S.		

STATE OF WEST VIRGINIA
 COUNTY OF GILMER
 Office of Assessor

GLENVILLE DISTRICT
SHEET 09

Date, Aerial Photography: MAR, 1961
 Photo No: 234
 Date, Map: MAR, 1963
 Scale: 1"=400'