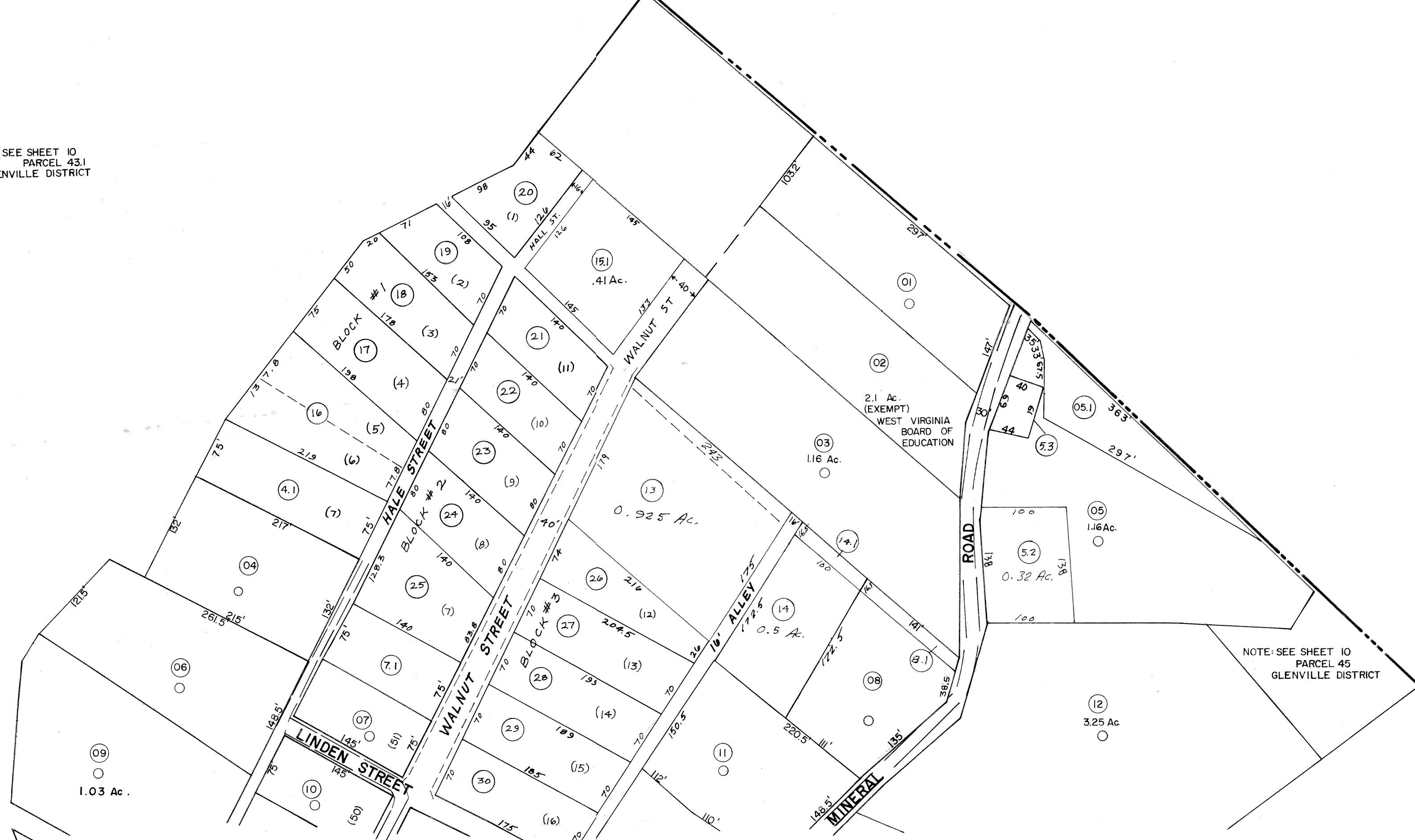


NOTE: SEE SHEET 10  
PARCEL 431  
GLENVILLE DISTRICT

68



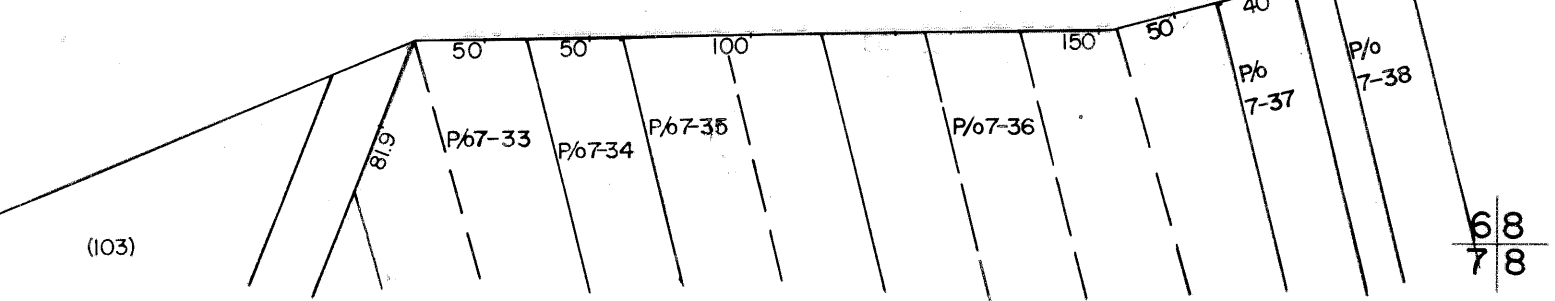
GLENVILLE DISTRICT

NOTE: SEE SHEET 10  
PARCEL 45  
GLENVILLE DISTRICT

NOTE: SEE SHEET 10  
PARCEL 34  
GLENVILLE DISTRICT

46  
47 P/6 4-01  
5.2 TOTAL Ac.

09  
1.03 Ac.



68  
78

FOR TAX PURPOSES ONLY

Prepared by  
**L. ROBERT KIMBALL**  
Consulting Engineer  
Ebensburg, Pennsylvania

Legend

Property line	—	Original lot line	—
Edge of pavement or roadway	—	Deed lot number in parenthesis	(15)
Corporation line	—	Parcel or index number in circle	⊙
District line	—	Improvement	○
County line	—	Railroad	—

Revisions

1	REVISED 4/24/63	9	
2	REVISED TO JULY 1965 11h	10	
3	LOGS 11-12-74 OAE	11	
4	10-30-75 DS	12	
5	Revised to 7-81	13	
6	OGIS 4-19-93 JEB	14	
7		15	
8		16	

STATE OF WEST VIRGINIA  
COUNTY OF GILMER  
Office of Assessor

GLENVILLE CORPORATION  
SHEET 06

Date, Aerial Photography: MAY, 1961  
Photo No: 50-115  
Date, Map: JUNE, 1962  
Scale: 1"=100'