

FOR TAX PURPOSES ONLY

Prepared By:

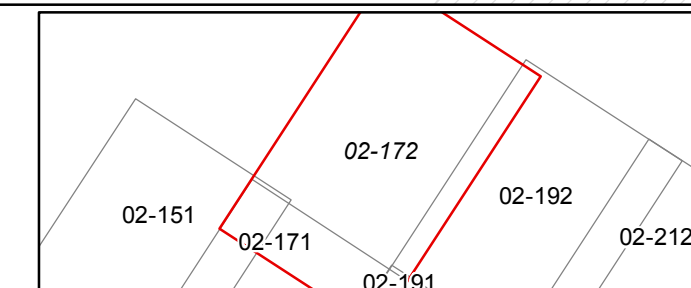
Ralph Layton
Grant County Assessor

Legend

Property Line	—	Original Lot Line	—
Road Right of Way	—	Lot Number	(15)
Corporation Line	—	Parcel Number	(99)
District Line	—	Water	—
County Line	—	Railroad	—

R	1	Revised 10/1/16	9	17
0	2	Revised 12/30/2016	10	18
V	3		11	19
I	4		12	20
S	5		13	21
I	6		14	22
O	7		15	23
N	8		16	24

STATE OF WEST VIRGINIA
COUNTY OF GRANT
Office of Assessor



GRANT
Map: 172

Date, Aerial Photography: 2015
Date, Map: 1/25/2017
Scale: 1" = 400'