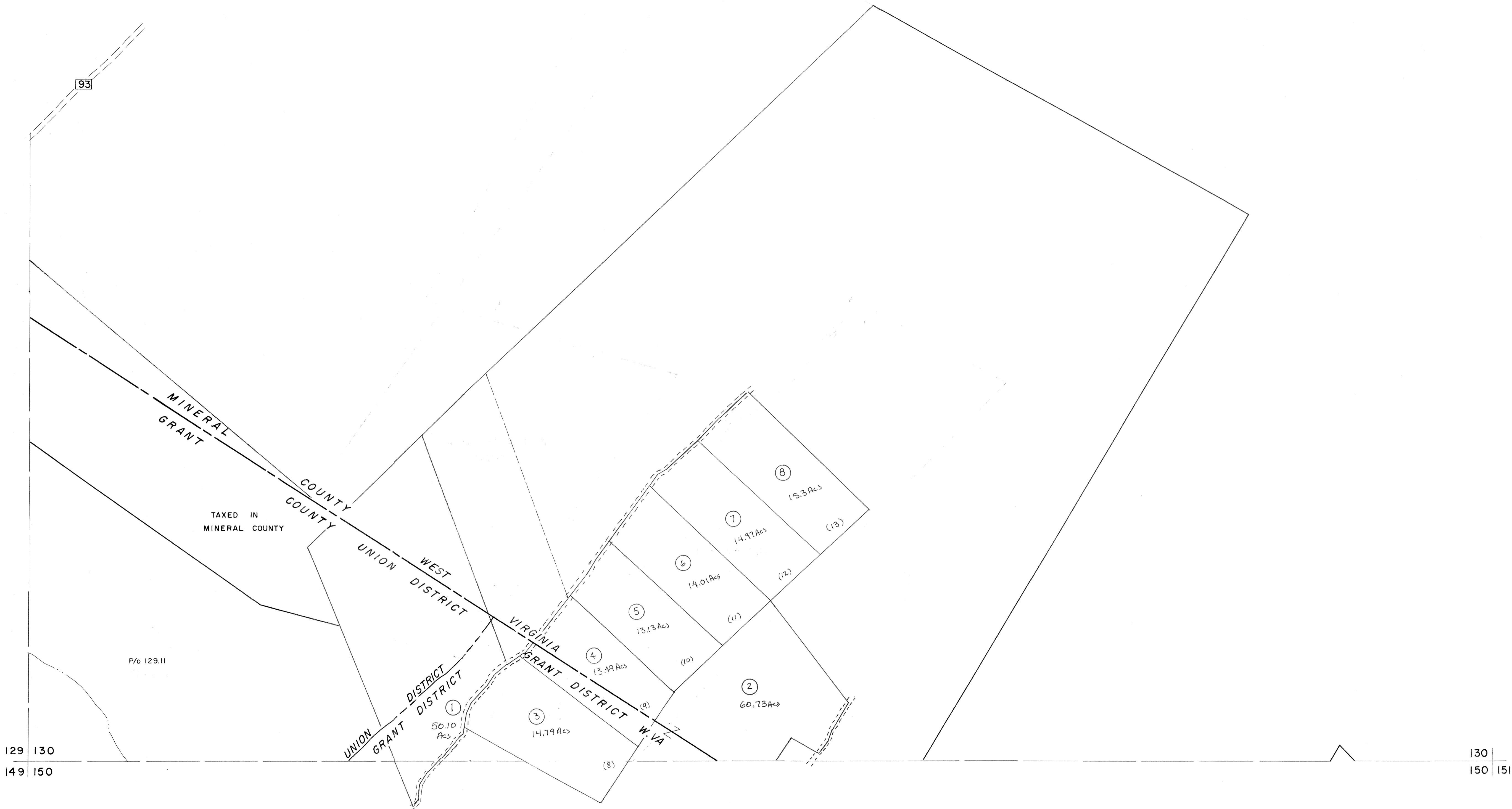


109
129 130

130



129 130
149 150

130
150 151

For Tax Purposes Only

Prepared by
MICHAEL BAKER, JR., INC.
Consulting Engineers
Rochester, Pennsylvania

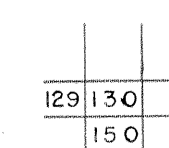
Legend

Property line	—————	Original lot line	-----
Edge of pavement or roadway	-----	Deed lot number	(15)
Corporation line	-----	Parcel or index number	(22)
District line	-----	Improvement	o
County line	-----	Railroad	+

Revisions

1	3/1/75	30	9	EXCALIBUR	07/07	17
2	REV. TO 7/81 DR. 3/82 NS		10			18
3	JULY 1982	TRL	11			19
4	EXCALIBUR GRAPHICS 7/91		12			20
5	EXCALIBUR GRAPHICS 7/93		13			21
6	EXCALIBUR 1/99		14			22
7	EXCALIBUR 12-01		15			23
8	EXCALIBUR 7/03		16			24

KEY MAP



GRANT COUNTY
STATE OF WEST VIRGINIA
Office of Assessor

DISTRICT UNION
GRANT

SHEET NO: 130

Date, Aerial Photography: Nov., 1961 Date, Map: Dec., 1962
Photo No: Scale: 1" = 400'