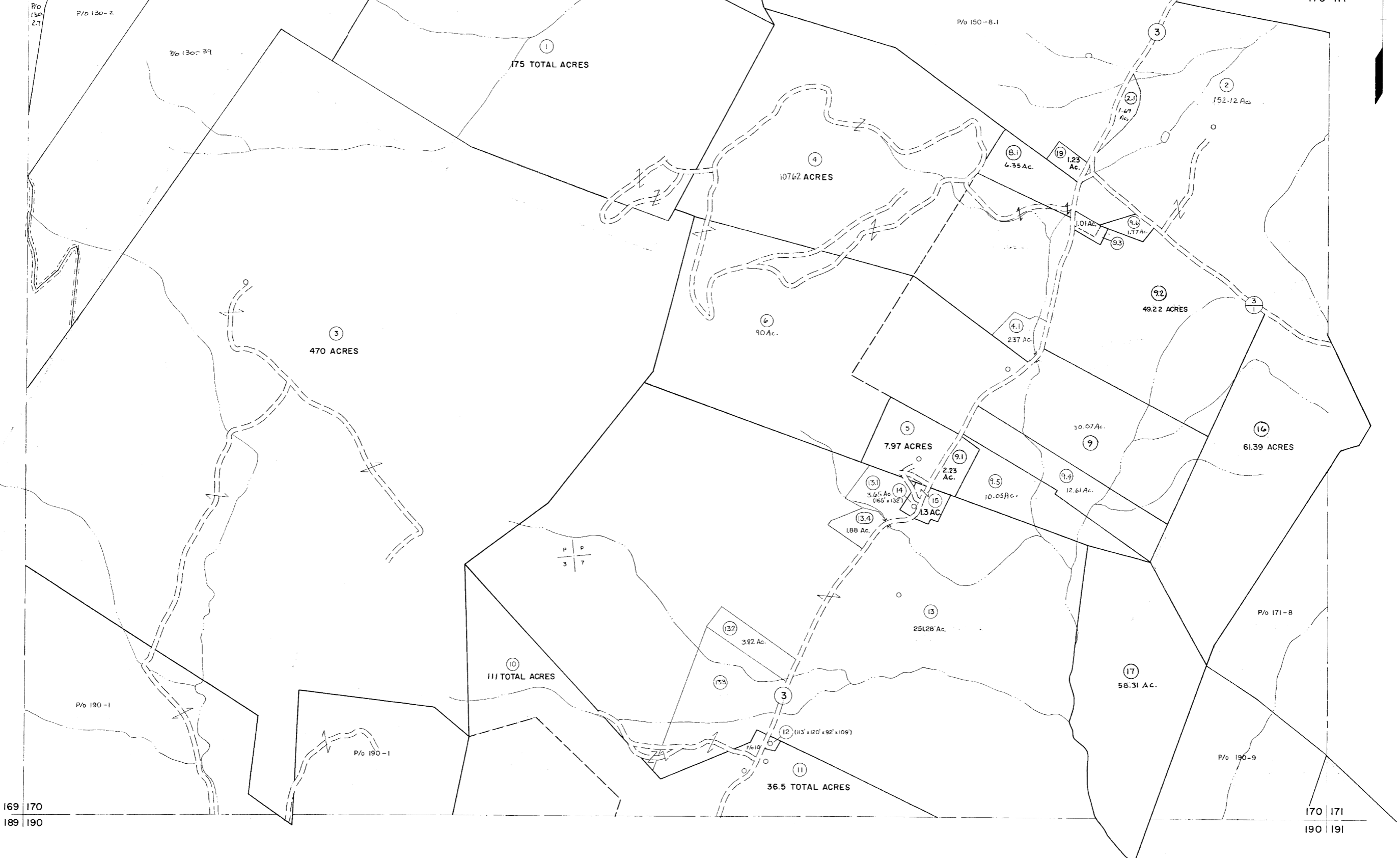


149 150
169 170

150 151
170 171



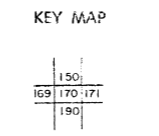
169 170
189 190

170 171
190 191

For Tax Purposes Only
 Prepared by
MICHAEL BAKER, JR., INC.
 Consulting Engineers
 Rochester, Pennsylvania

Legend	
Property line	—————
Edge of pavement or roadway	- - - - -
Corporation line	—————
District line	- - - - -
County line	—————
Original lot line	—————
Deed lot number	①
Parcel or index number	②
Improvement	○
Railroad	—+—+—+—

Revisions	
1	5-22-67
2	5/23/73 MARSHALL
3	4-14-75 T.G.
4	12-29-80 Nancy Strawser
5	JULY 1982 TRL
6	REV. TO 7-1-85 NCS
7	July, 1986 TRL
8	REV. TO 7-19-89 R.E.B.
9	EXCALIBUR GRAPHICS 7/93
10	EXCALIBUR 6/99
11	EXCALIBUR 7-04
12	EXCALIBUR 7/09
13	
14	
15	
16	



GRANT COUNTY
 STATE OF WEST VIRGINIA
 Office of Assessor

DISTRICT **GRANT**
SHEET NO: 170
 Date, Aerial Photography: Nov., 1961
 Photo No: _____
 Date, Map: Dec., 1962
 Scale: 1" = 400'