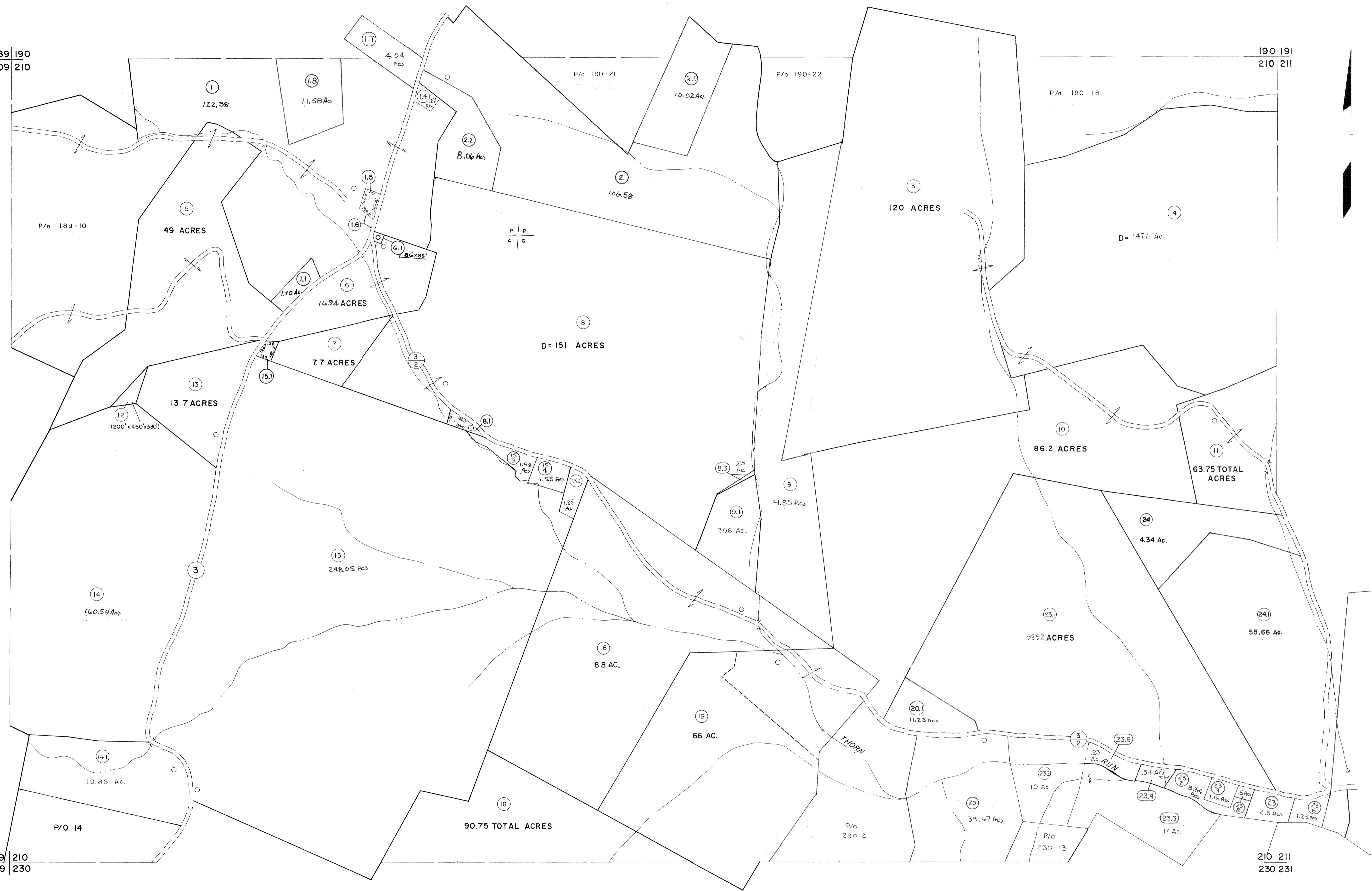


189 190  
209 210

190 191  
210 211

209 210  
229 230

210 211  
230 231



For Tax Purposes Only

Prepared by  
MICHAEL BAKER, JR., INC.  
Consulting Engineers  
Rochester, Pennsylvania

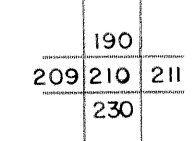
Legend

Property line	—————	Original lot line	-----
Edge of pavement or roadway	-----	Deed lot number	(15)
Corporation line	-----	Parcel or index number	(99)
District line	-----	Improvement	O
County line	-----	Railroad	+

Revisions

1	8-22-69	9	Revised to 7-1-85	17	EXCALIBUR 7-04
2	5/23/73 MARSHALL	10	Revised to 7-1-87	18	EXCALIBUR 01/07
3	4-14-75 T.G.	11	Revised to 7-19-87	19	
4	9/1/76 T.G.	12	EXCALIBUR GRAPHICS 7/91	20	
5	12-30-80 NCS	13	EXCALIBUR GRAPHICS 7/93	21	
6	Revised to 7-8	14	EXCALIBUR 1/99	22	
7	JULY 1982 TRL	15	EXCALIBUR 6/99	23	
8	July 1991 TRL	16	EXCALIBUR 7/03	24	

KEY MAP



GRANT COUNTY  
STATE OF WEST VIRGINIA  
Office of Assessor

DISTRICT

GRANT

SHEET NO: 210

Date, Aerial Photography: Nov. 1961 Date, Map: Dec. 1962  
Photo No: Scale: 1" = 400'