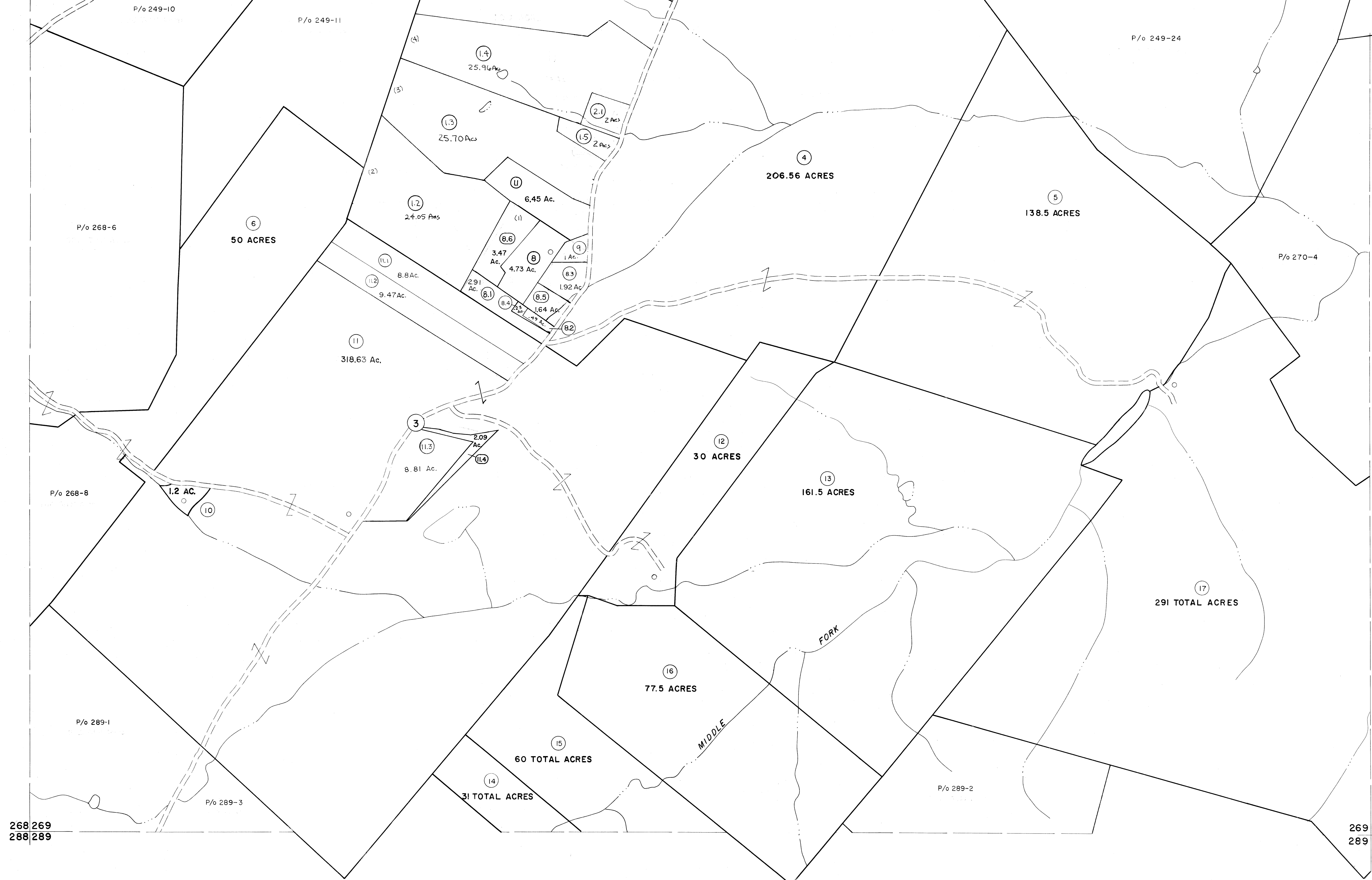


248 249  
268 269

249 250  
270 270



**For Tax Purposes Only**

Prepared by  
**MICHAEL BAKER, JR., INC.**  
Consulting Engineers  
Rochester, Pennsylvania

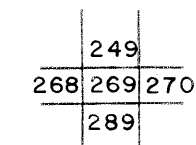
**Legend**

Property line	—————	Original lot line	-----
Edge of pavement or roadway	-----	Deed lot number	(15)
Corporation line	-----	Parcel or index number	(16)
District line	-----	Improvement	o
County line	-----	Railroad	—+—

**Revisions**

1	5/23/78	MARSHALL	9	Revised to 7-1-85	17
2	4-14-75	T. G.	10	Revised to 7-1-85	18
3	9-1-76	T. G.	11	EXCALIBUR GRAPHICS 7/93	19
4	11/22/74	20	12	EXCALIBUR GRAPHICS 7/93	20
5	12-29-80	21	13	EXCALIBUR 1/89	21
6	Revised to 7-81	22	14	EXCALIBUR 6/99	22
7	JULY, 1982	23	15		23
8	REV. TO 7-1-83	24	16		24

**KEY MAP**



**GRANT COUNTY**  
STATE OF WEST VIRGINIA  
Office of Assessor

**DISTRICT**

**GRANT**

**SHEET NO: 269**

Date, Aerial Photography: November, 1961 Date, Map: Dec., 1962  
Photo No: Scale: 1" = 400'