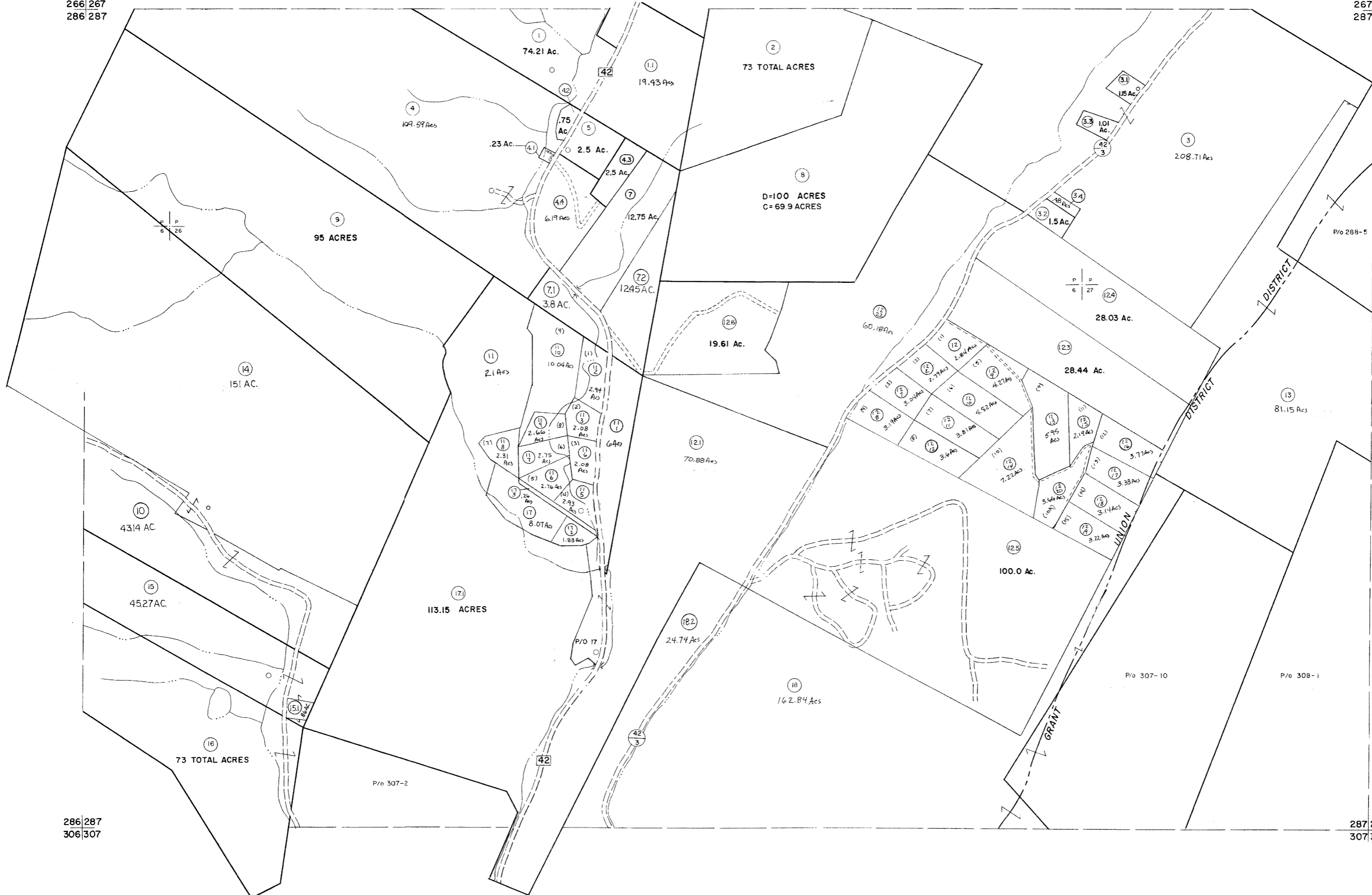


266|267
286|287

267|268
287|288



286|287
306|307

287|288
307|308

For Tax Purposes Only

Prepared by
MICHAEL BAKER, JR., INC.
Consulting Engineers
Rochester, Pennsylvania

Legend

Property line	---	Original lot line	---
Edge of pavement or roadway	---	Deed lot number	---
Corporation line	---	Parcel or index number	---
District line	---	Improvement	---
County line	---	Railroad	---

Revisions

1	5-29-73 D.W.V.	9	EXCALIBUR	1199	17
2	3-4-75	10	EXCALIBUR	12/01	18
3	Revised to 7-81	11	EXCALIBUR	7/03	19
4	JULY, 1982	12	EXCALIBUR	7-04	20
5	July, 1984	13	EXCALIBUR	7-08	21
6	July, 1986	14	EXCALIBUR	7-09	22
7	Revised to 7-1989	15			23
8	EXCALIBUR GRAPHICS 7/91	16			24

KEY MAP



GRANT COUNTY
STATE OF WEST VIRGINIA
Office of Assessor

DISTRICT UNION
GRANT

SHEET NO: 287

Date, Aerial Photography: November, 1961 Date, Map: Dec., 1962
Photo No. Scale: 1" = 400'