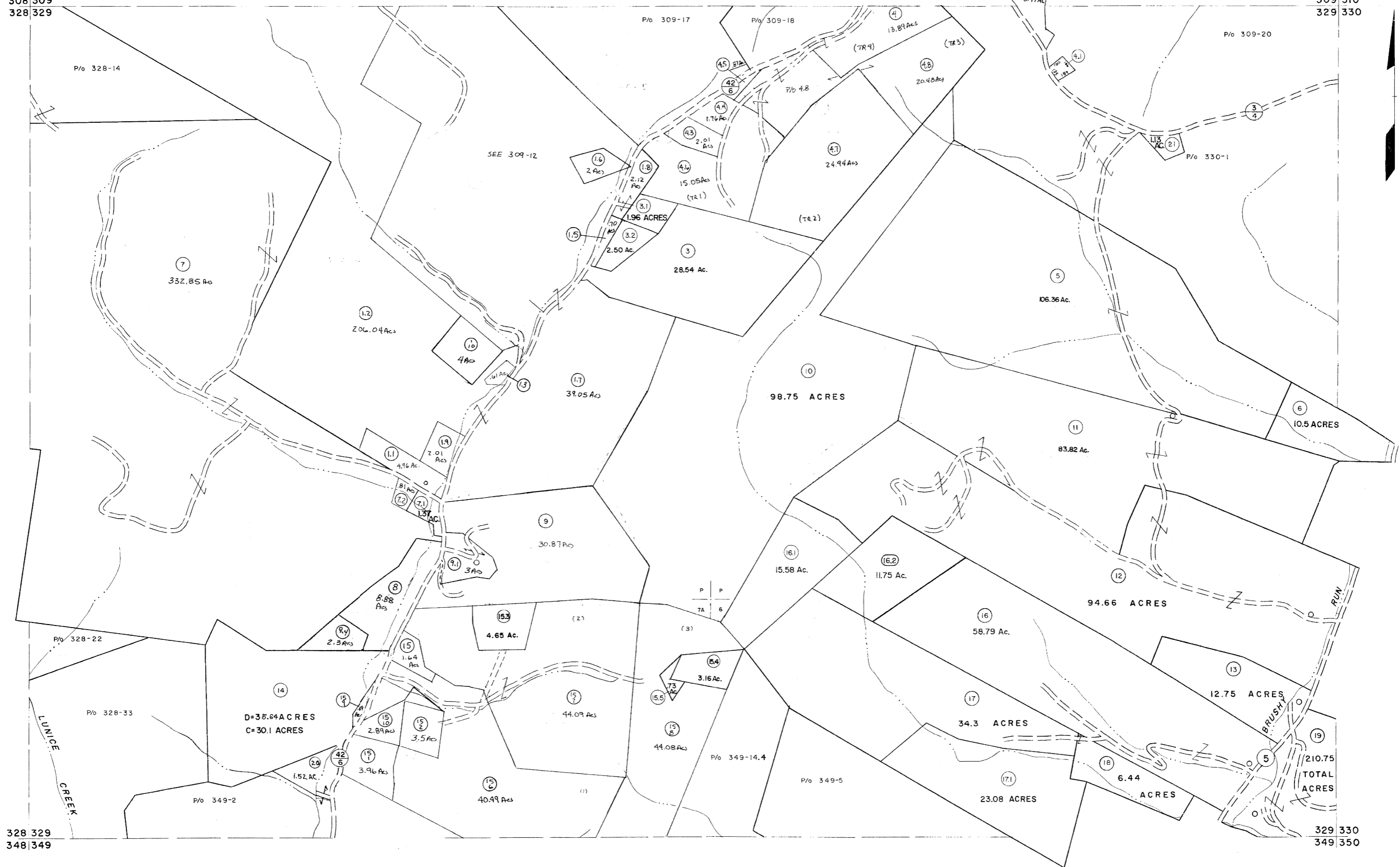


308 309  
328 329

309 310  
329 330



For Tax Purposes Only  
 Prepared by  
**MICHAEL BAKER, JR., INC.**  
 Consulting Engineers  
 Rochester, Pennsylvania

Legend	
Property line	—————
Edge of pavement or roadway	—————
Corporation line	—————
District line	—————
County line	—————
Original lot line	—————
Dead lot number	(15)
Parcel or index number	(29)
Improvement	○
Railroad	—————

Revisions	
1	5-18-73 DAE
2	4-15-75 T.G.
3	9-2-76 T.G.
4	11-21-76 J.C.
5	1-5-81 TAL
6	JULY, 1981 TAL
7	JULY, 1982 TAL
8	REV. TO 7-1-83 NCS
9	July 1979 TRL
10	July 1979 TRL
11	JULY 1985 TRL
12	REV. TO 7-19-89 R.E.B.
13	EXCALIBUR GRAPHICS 7/91
14	EXCALIBUR 1/99
15	EXCALIBUR 6/99
16	EXCALIBUR 12/01
17	EXCALIBUR 7/03
18	EXCALIBUR 7-04
19	EXCALIBUR 7/08
20	EXCALIBUR 7/09
21	
22	
23	
24	

KEY MAP

**GRANT COUNTY**  
 STATE OF WEST VIRGINIA  
 Office of Assessor

DISTRICT **GRANT**  
 SHEET NO: **329**  
 Date, Aerial Photography: Nov., 1961  
 Photo No: \_\_\_\_\_  
 Date, Map: Dec, 1962  
 Scale: 1" = 400'