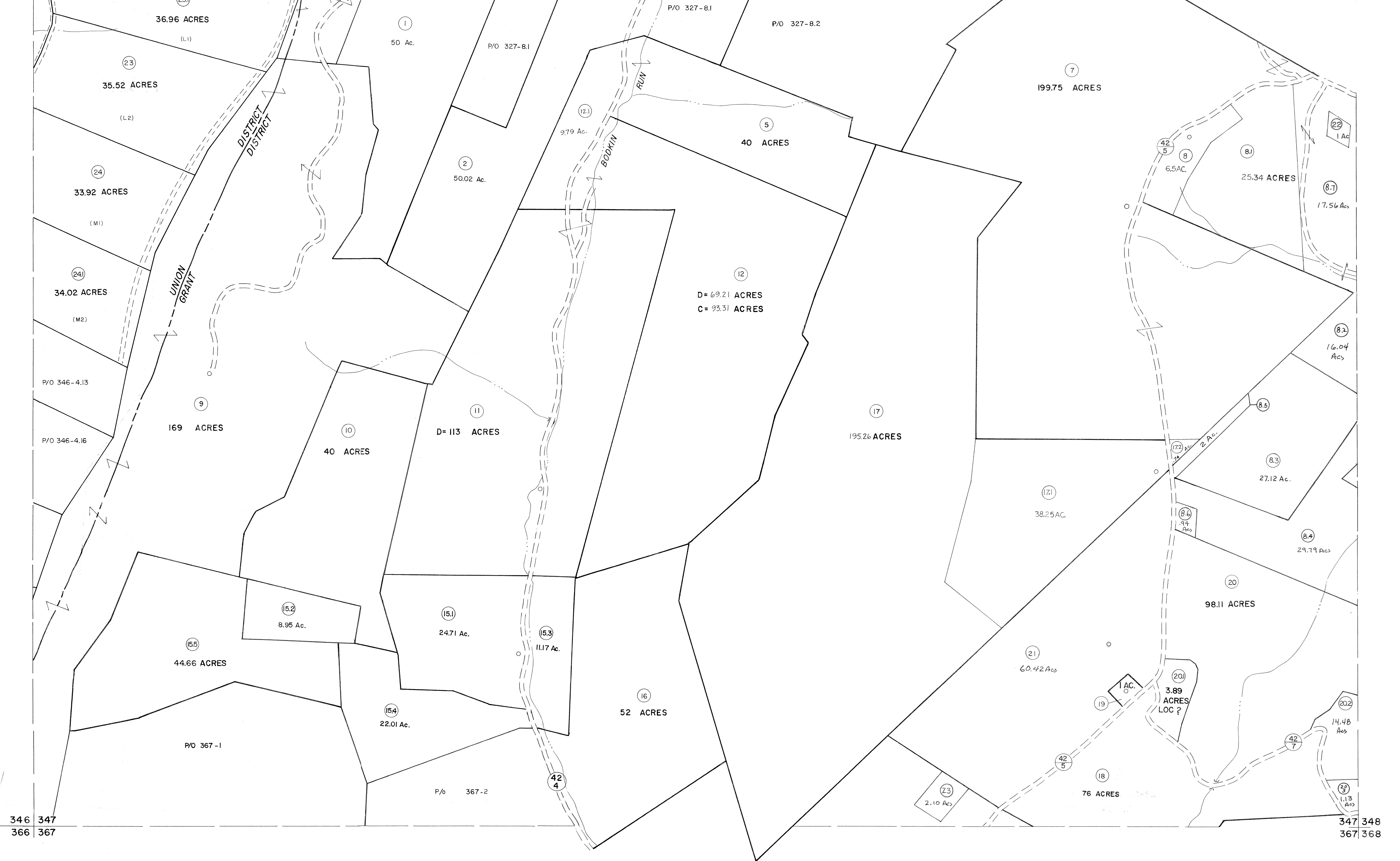


326 327
346 347

327 328
347 348



For Tax Purposes Only
 Prepared by
MICHAEL BAKER, JR., INC.
 Consulting Engineers
 Rochester, Pennsylvania

Legend	
Property line	———
Edge of pavement or roadway	———
Corporation line	———
District line	———
County line	———
Original lot line	-----
Deed lot number	(15)
Parcel or index number	(99)
Improvement	o
Railroad	———

Revisions			
1	REV. TO 2-1-84	NCS	EXCALIBUR 6/99
2	4-15-75	T.G.	EXCALIBUR 7-05
3	9-1-76	T.G.	EXCALIBUR 7/07
4	11/22/76	J.C.	EXCALIBUR 7/07
5	1-2-81	NCS	
6	JULY, 1981	TRL	
7	JULY, 1982	TRL	
8	REV. TO 7-1-83	NCS	
9	REV. TO 7-1-84	NCS	
10	1/1/85	TRL	
11	July, 1986	TRL	
12	Revised to 7-1-87	J.C.	
13	REV. TO 7-19-89	R.E.B.	
14	EXCALIBUR GRAPHICS 7/91		
15	EXCALIBUR GRAPHICS 7/92		
16	EXCALIBUR GRAPHICS 7/93		

KEY MAP

GRANT COUNTY
 STATE OF WEST VIRGINIA
 Office of Assessor

DISTRICT
GRANT-UNION
 SHEET NO: 347
 Date, Aerial Photography: November, 1961 Date, Map: Dec., 1962
 Photo No: Scale: 1" = 400'