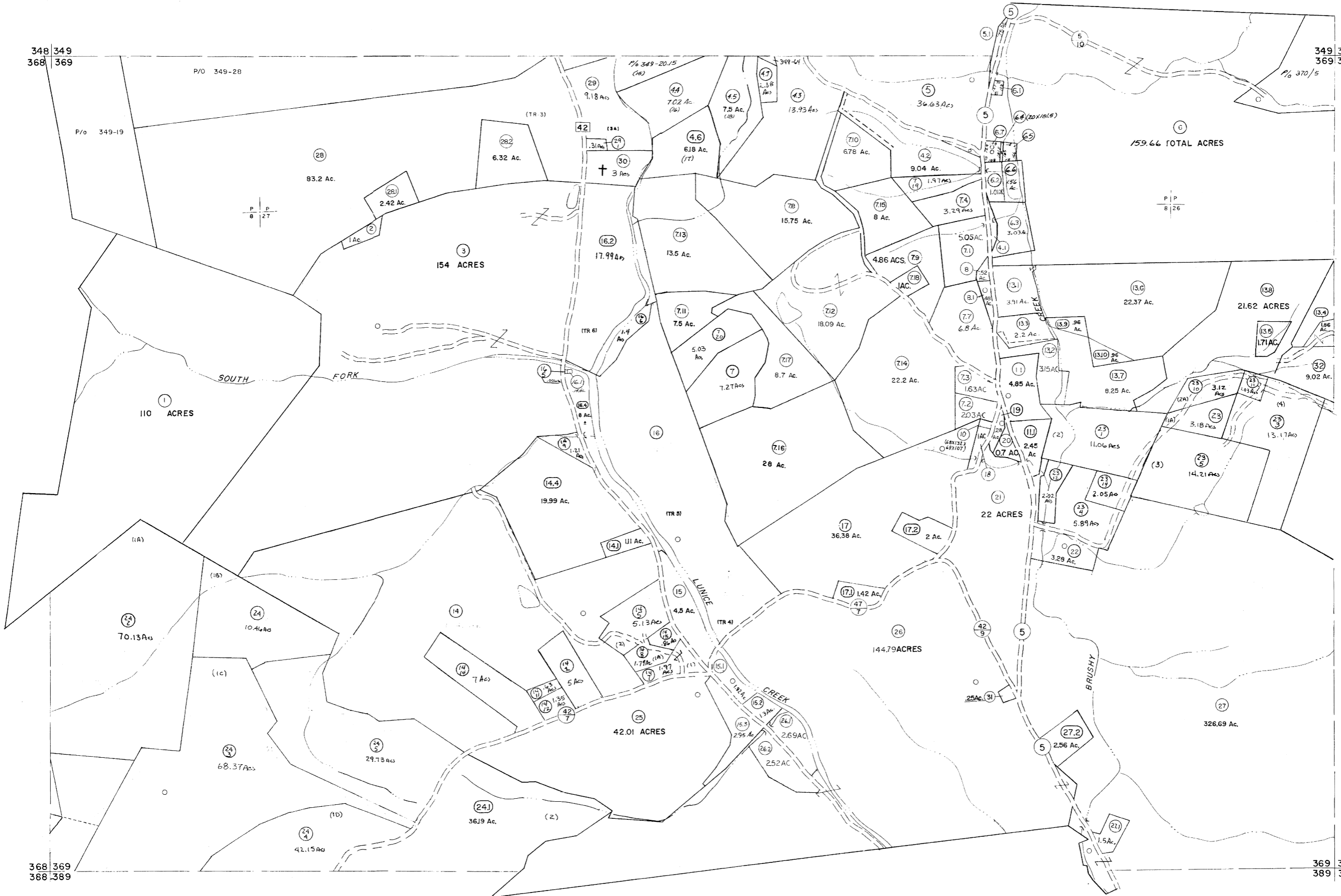


348 349
368 369

349 350
369 370



368 369
388 389

369 370
389 390

For Tax Purposes Only

Prepared by
MICHAEL BAKER, JR., INC.
Consulting Engineers
Rochester, Pennsylvania

Legend

Property line	---	Original lot line	---
Edge of pavement or roadway	---	Dead lot number	(15)
Corporation line	---	Parcel or index number	(99)
District line	---	Improvement	o
County line	---	Railroad	---

Revisions

1	MAY 22, 1973	NCS	11/11/83	EXCALIBUR 7/03
2	4-16-75	T.G.	REVISED TO 7-1-81	EXCALIBUR 7-04
3	9-2-76	T.G.	REV. TO 7-19-89	EXCALIBUR 7-06
4	1-6-81	---	EXCALIBUR GRAPHICS 7/91	EXCALIBUR 7/07
5	Revised to 7-81	---	EXCALIBUR GRAPHICS 7/92	EXCALIBUR 7/08
6	Revised to 7-82	---	EXCALIBUR GRAPHICS 7/93	EXCALIBUR 7/09
7	REV. TO 7-1-83	NCS	EXCALIBUR 11/98	---
8	REV. TO 7-1-84	NCS	EXCALIBUR 6/99	---

KEY MAP



GRANT COUNTY
STATE OF WEST VIRGINIA
Office of Assessor

DISTRICT

GRANT

SHEET NO: 369

Date, Aerial Photography: November, 1961 Date, Map: Dec, 1962
Photo No: Scale: 1" = 400'