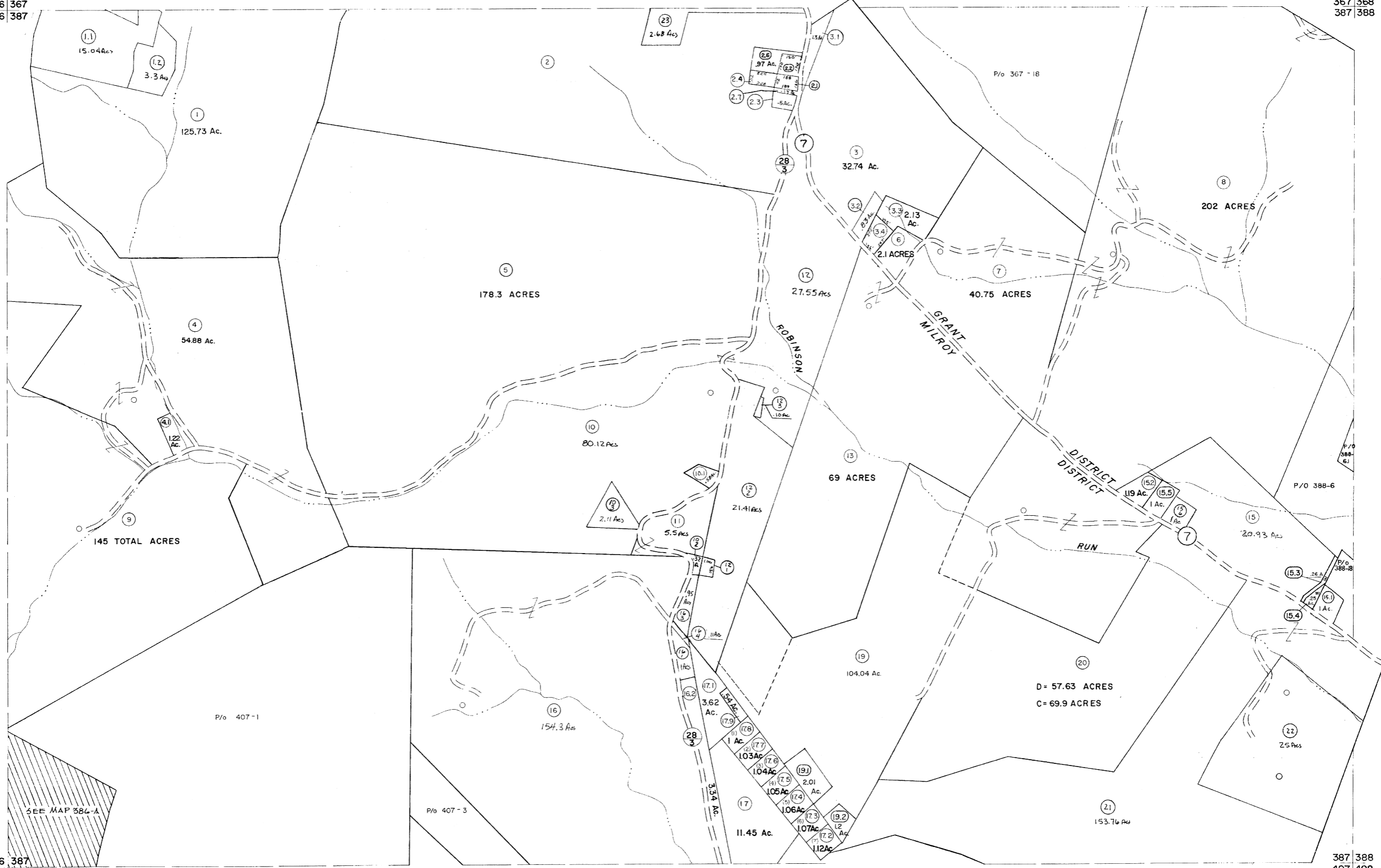


366 367  
386 387

367 368  
387 388



386 387  
406 407

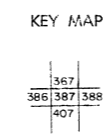
387 388  
407 408

For Tax Purposes Only

Prepared by  
MICHAEL BAKER, JR., INC.  
Consulting Engineers  
Rochester, Pennsylvania

Legend	
Property line	Original lot line
Edge of pavement or roadway	Deed lot number
Corporation line	Parcel or index number
District line	Improvement
County line	Railroad

Revisions	
1	5-22-63
2	5/25/73 MARSHALL
3	12-13-74 T.G.
4	4-14-75 T.G.
5	9/11/76
6	1-5-81
7	Revised to 7-81
8	Revised to 7-82
9	Revised to 7-1-88
10	July 1985
11	July 1986
12	Revised to 7-1-87
13	REV TO 7-19-89
14	EXCALIBUR GRAPHICS 7/91
15	EXCALIBUR GRAPHICS 7/92
16	EXCALIBUR GRAPHICS 7/93
17	EXCALIBUR 6/95
18	EXCALIBUR 7/03
19	EXCALIBUR 7-04
20	EXCALIBUR 7/06
21	EXCALIBUR 7/07
22	EXCALIBUR 7/09



GRANT COUNTY  
STATE OF WEST VIRGINIA  
Office of Assessor

DISTRICT  
MILROY-GRANT

SHEET NO: 387

Date, Aerial Photography: Nov., 1961 Date, Map: Dec., 1962  
Photo No: Scale: 1" = 400'