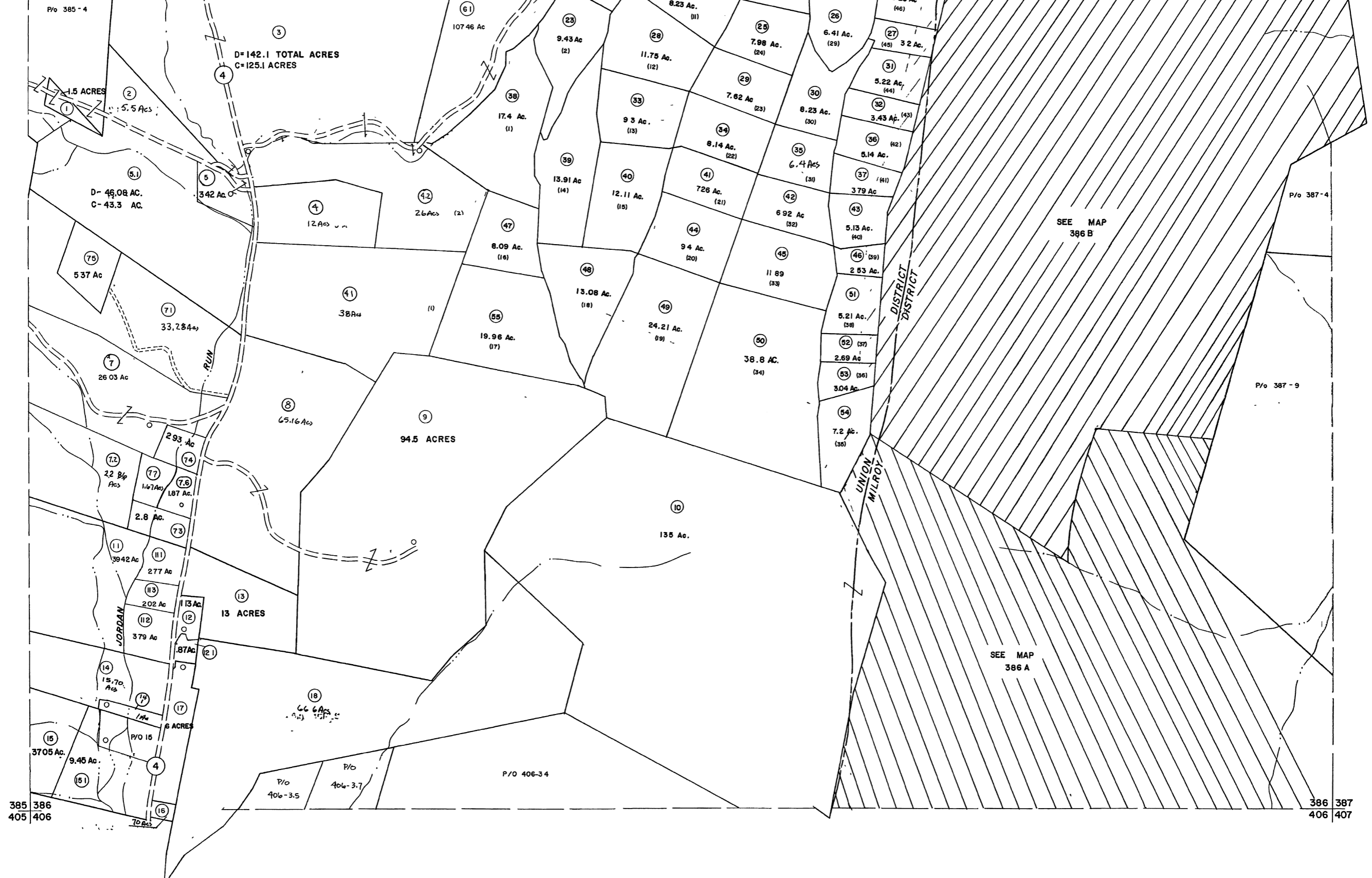


365 366
385 386

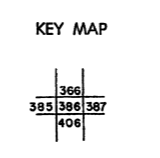
366 367
386 387



For Tax Purposes Only
 Prepared by
MICHAEL BAKER, JR., INC.
 Consulting Engineers
 Rochester, Pennsylvania

Legend	
Property line	—
Edge of pavement or roadway	- - - -
Corporation line	- · - · -
District line	- - - - -
County line	- - - - -
Original lot line	- - - - -
Deed lot number	(15)
Parcel or index number	⊙
Improvement	○
Railroad	—+—

Revisions			
1	5-28-73 DWV	9	Revised to 7-1-87
2	3/1/75	10	REV TO 7-19-89
3	8-31-76	11	EXCALIBUR GRAPHICS 7/93
4	Revised to 7-80	12	EXCALIBUR 11/99
5	Revised to 7-82	13	EXCALIBUR 4/99
6	REV TO 7-1-83	14	EXCALIBUR 12/01
7	REV TO 7-1-84	15	NCS 7-04
8	July, 1985	16	Signature 7/08
17	EXCALIBUR 7/09		
18	EXCALIBUR 10/11		



GRANT COUNTY
 STATE OF WEST VIRGINIA
 Office of Assessor

DISTRICT
UNION - MILROY
 SHEET NO: 386
 Date, Aerial Photography: Nov., 1961 Date, Map: Dec., 1962
 Photo No: Scale: 1" = 400'