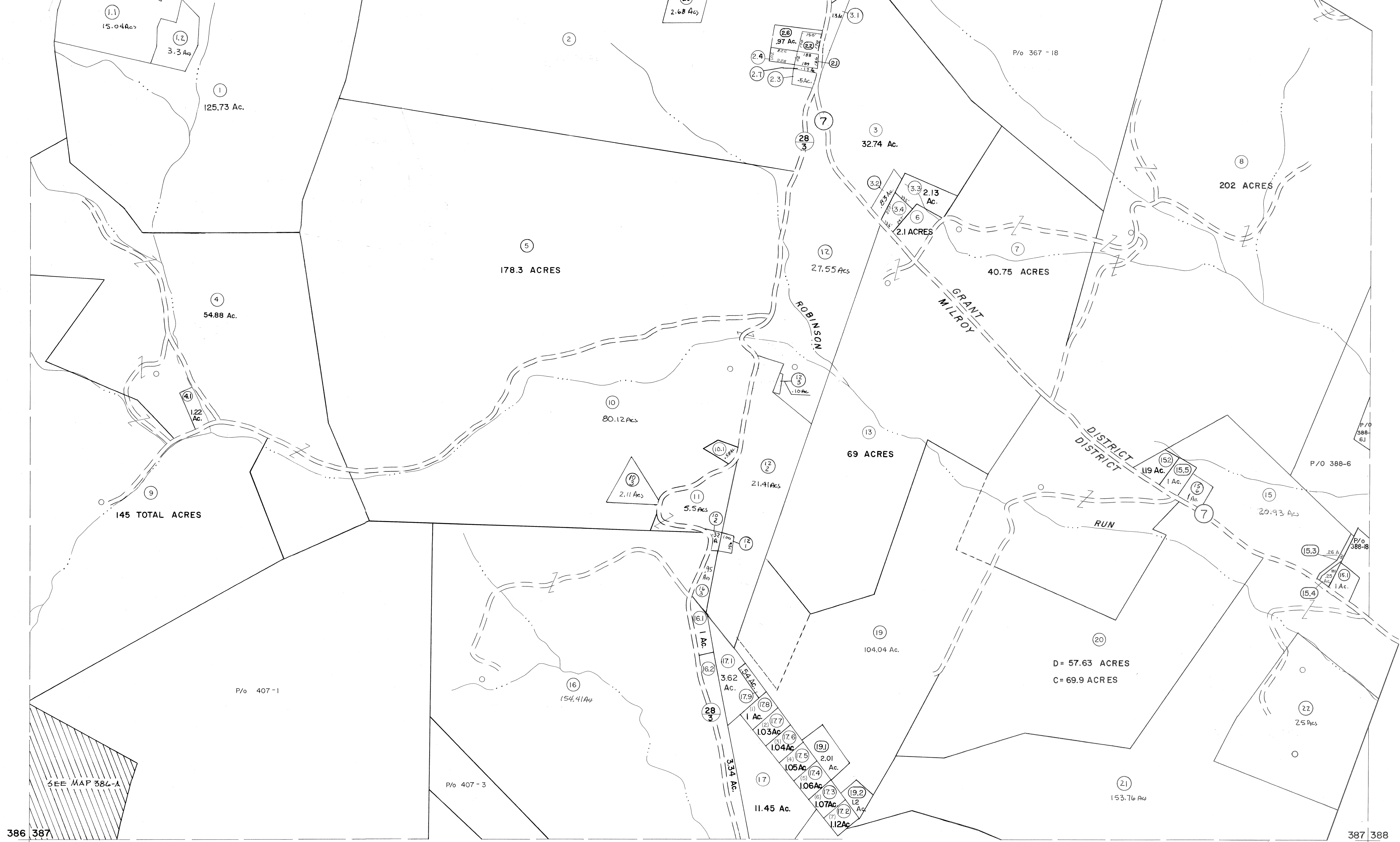


366 367
386 387

367 368
387 388



386 387
406 407

387 388
407 408

For Tax Purposes Only

Prepared by
MICHAEL BAKER, JR., INC.
Consulting Engineers
Rochester, Pennsylvania

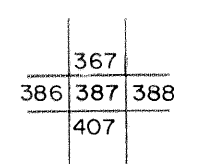
Legend

Property line	—	Original lot line	---
Edge of pavement or roadway	---	Deed lot number	(15)
Corporation line	----	Parcel or index number	(22)
District line	-----	Improvement	o
County line	-----	Railroad	+

Revisions

1	5-22-68	9	Revised to 7-1-89	17	EXCALIBUR	6/95
2	5/23/73	10	Revised to 7-1-89	18	EXCALIBUR	7/03
3	12-13-74	11	July, 1985	19	EXCALIBUR	7-04
4	4-16-75	12	Revised to 7-1-87	20	EXCALIBUR	7-05
5	9-12-76	13	REV. TO 7-19-89	21	EXCALIBUR	7-07
6	1-5-81	14	EXCALIBUR GRAPHICS 7/91	22		
7	Revised to 7-81	15	EXCALIBUR GRAPHICS 7/92	23		
8	Revised to 7-82	16	EXCALIBUR GRAPHICS 7/93	24		

KEY MAP



GRANT COUNTY
STATE OF WEST VIRGINIA
Office of Assessor

DISTRICT
MILROY-GRANT

SHEET NO: 387

Date, Aerial Photography: Nov., 1961 Date, Map: Dec., 1962
Photo No: Scale: 1" = 400'