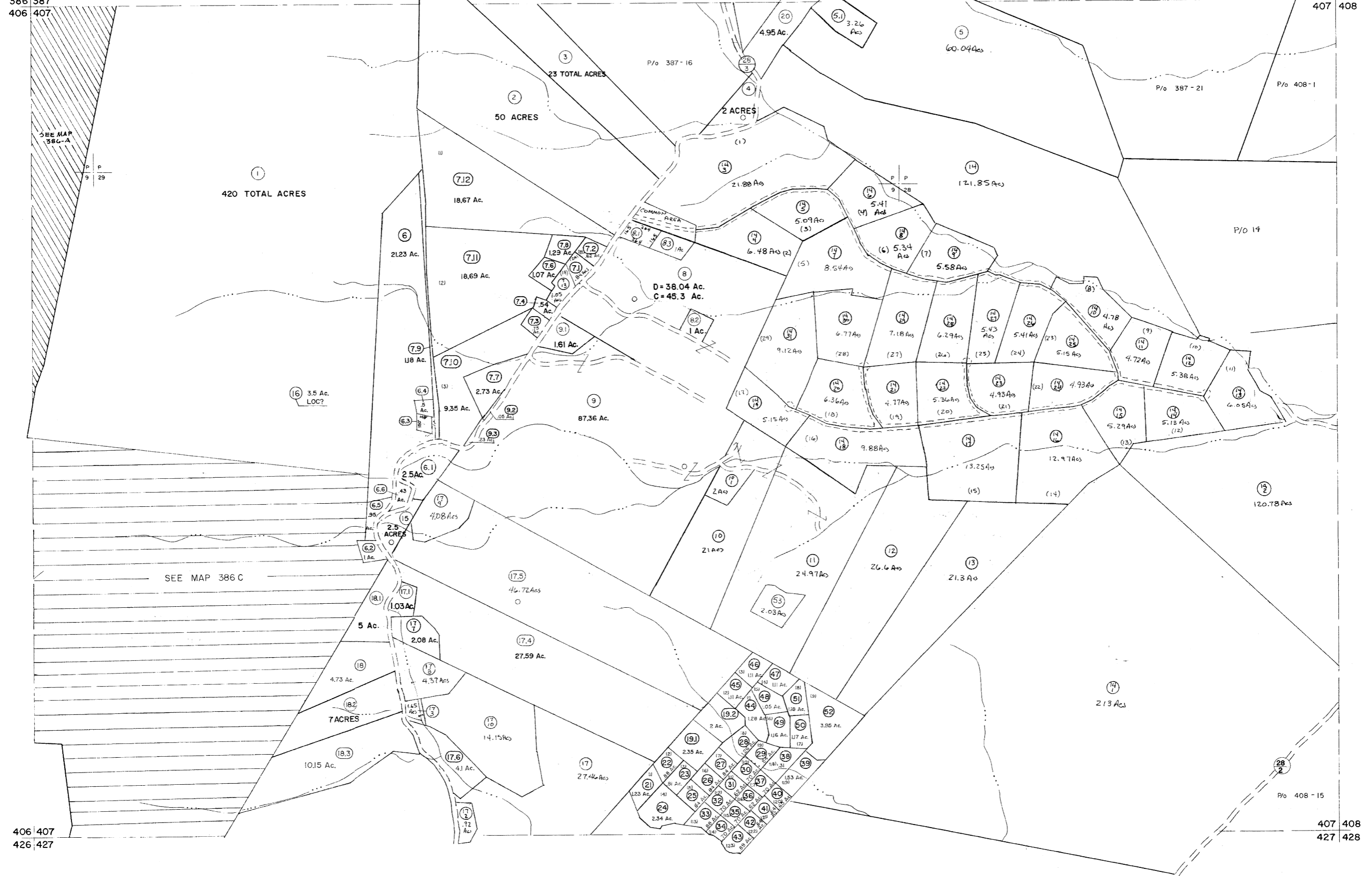


386 387  
406 407

387 388  
407 408



For Tax Purposes Only

Prepared by  
MICHAEL BAKER, JR., INC.  
Consulting Engineers  
Rochester, Pennsylvania

Legend

Property line	---
Edge of pavement or roadway	---
Corporation line	---
District line	---
County line	---
Original lot line	---
Deed lot number	(15)
Parcel or index number	(9)
Improvement	○
Railroad	---

Revisions

1	5/25/73	Manual	9	EXCALIBUR GRAPHICS 7/91	17	EXCALIBUR 7/09
2	12-13-74	T.C.	10	EXCALIBUR GRAPHICS 7/92	18	
3	Revised to 7-81		11	EXCALIBUR GRAPHICS 7/93	19	
4	Revised to 7-82		12	EXCALIBUR 1/79	20	
5	REV. TO 7-1-86	NCS	13	EXCALIBUR 6/79	21	
6	Revised to 7-1-87		14	EXCALIBUR 12/01	22	
7	REV. TO 7-18-89	REB	15	EXCALIBUR 7/03	23	
8			16	EXCALIBUR 7/04	24	

KEY MAP



GRANT COUNTY  
STATE OF WEST VIRGINIA  
Office of Assessor

DISTRICT

MILROY

SHEET NO: 407

Date, Aerial Photography: Nov., 1961  
Date, Map: Dec., 1962  
Photo No. Scale: 1" = 400'