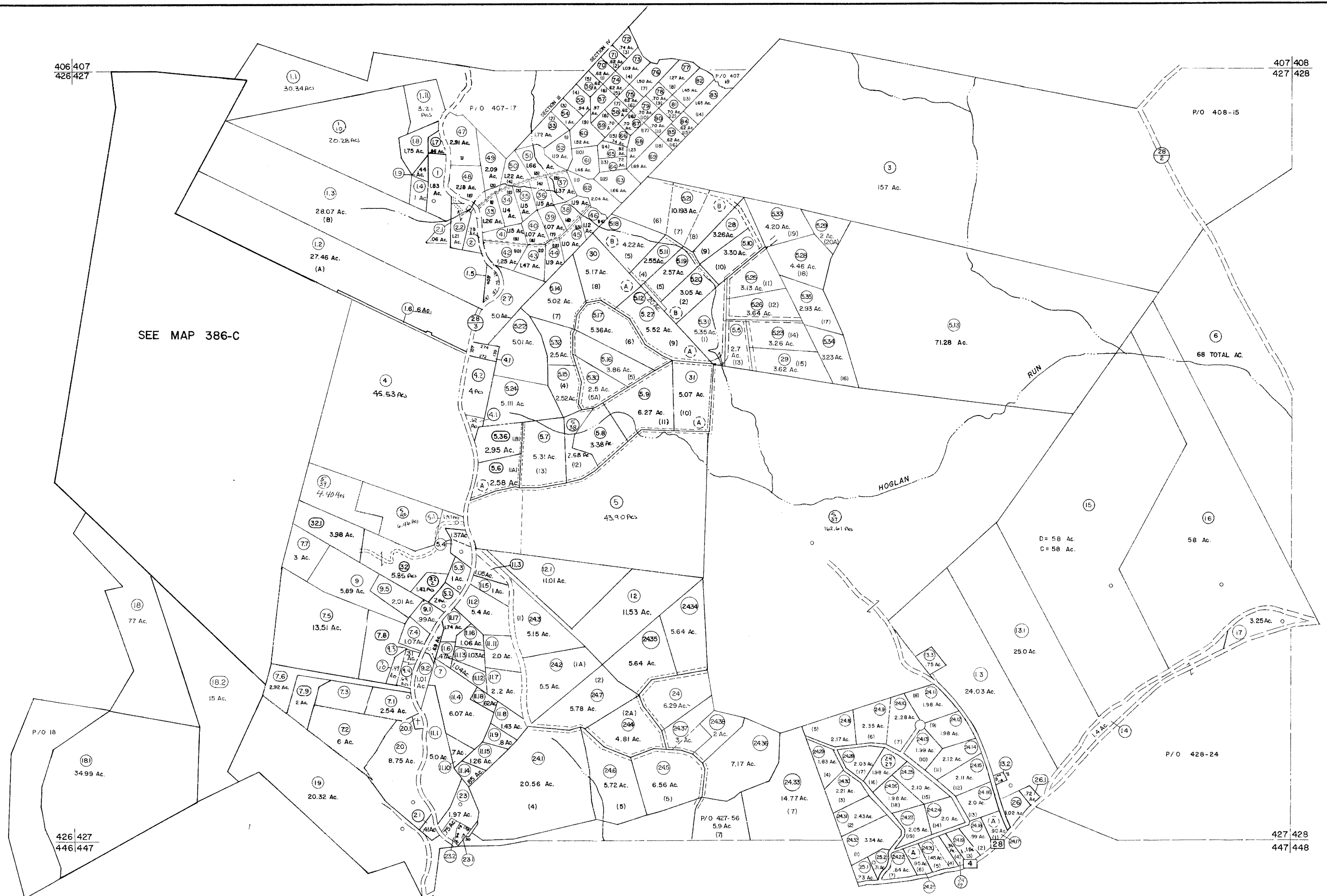


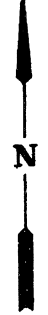
406 407
426 427

407 408
427 428



SEE MAP 386-C

Hoglan Run



For Tax Purposes Only

Prepared by
LOCAL GOVERNMENT RELATIONS DIV.
STATE TAX COMMISSIONER
CHARLESTON, W.VA.

LEGEND

Property line	-----	Original lot line	-----
Edge of pavement or roadway	-----	Deed lot number	(15)
Corporation line	-----	Parcel or index number	(99)
District line	-----	Improvement	o
County line	-----	Railroad	o

REVISIONS

1	EXCALIBUR	7/04
2	EXCALIBUR	7/09
3	EXCALIBUR	6/99
4	EXCALIBUR	7/03
5	EXCALIBUR	7/07
6	REV TO 7-1-86	NCS
7	Revised to 7-1-87	ESD
8	EXCALIBUR GRAPHICS	7/91

RESTRICTION

All tax maps created under the provisions of reappraisal legislation are the property of the State of West Virginia and the reproduction, copying, distribution or sale of such tax maps or any copies thereof without the written permission of the State Tax Commissioner is prohibited by law.

KEY MAP



GRANT COUNTY
STATE OF WEST VIRGINIA
Office of Assessor

MILROY

SHEET NO. 427

Date, Aerial Photography: NOV. 1961
Photo No:

Date, Map: DEC. 1962
Scale: 1" = 400'

426 427
446 447

427 428
447 448