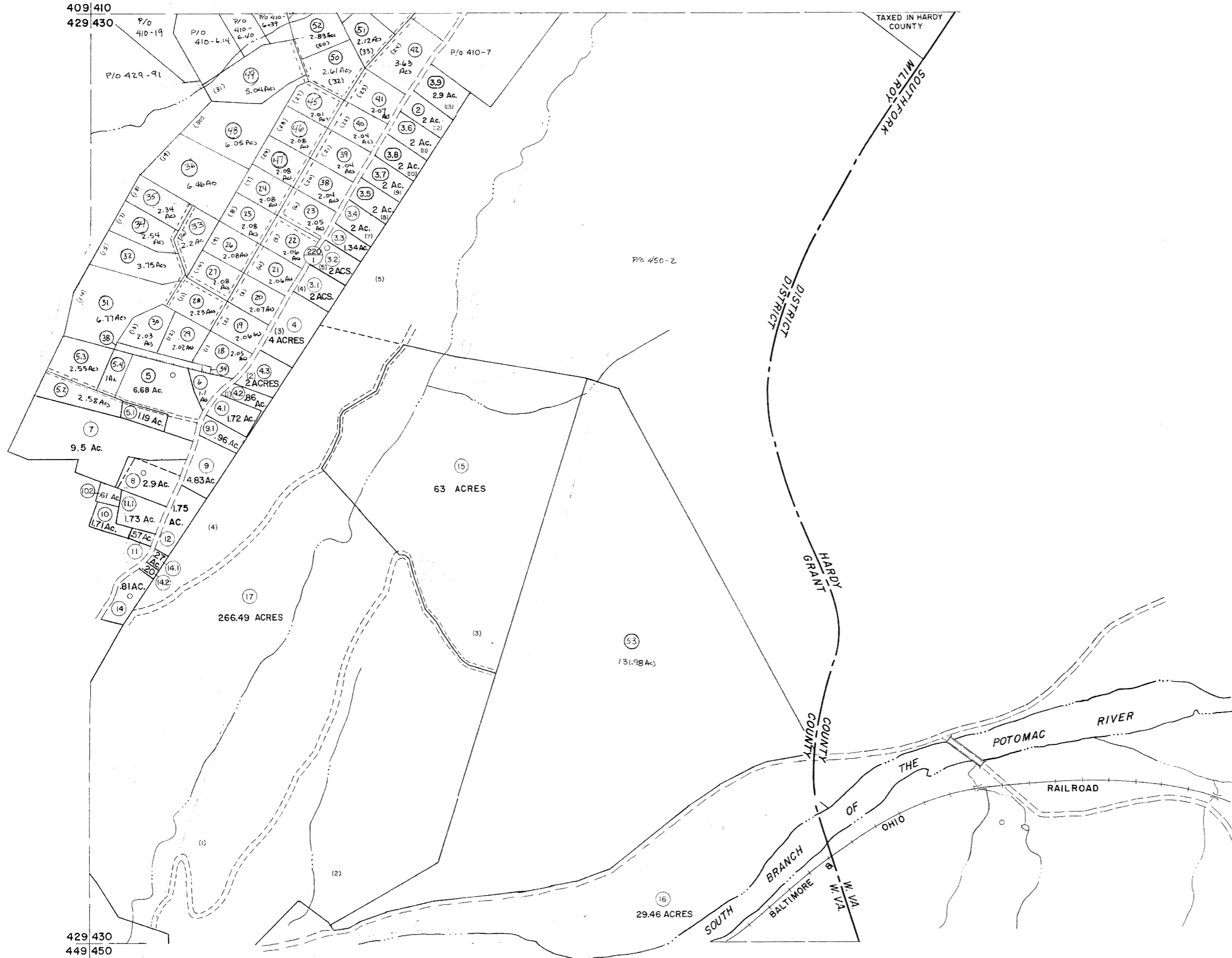


409 410
429 430

410
430



429 430
449 450

430
450

For Tax Purposes Only

Prepared by
MICHAEL BAKER, JR., INC.
Consulting Engineers
Rochester, Pennsylvania

Legend

Property line	-----	Original lot line	-----
Edge of pavement or roadway	-----	Deed lot number	(15)
Corporation line	-----	Parcel or index number	(15)
District line	-----	Improvement	(15)
County line	-----	Railroad	(15)

Revisions

1	MAY 21 1932 DRC	9	Rev. to 7-10-89	R.E.B.	17	EXCALIBUR	7/07
2	12-16-74	T.G.	10	EXCALIBUR GRAPHICS 7/31	18	EXCALIBUR	7/08
3	Revised to 7-20		11	EXCALIBUR GRAPHICS 7/92	19	EXCALIBUR	7/09
4	REV TO 7-1-83	NCS	12	EXCALIBUR GRAPHICS 7/93	20		
5	REV TO 7-1-84	NCS	13	EXCALIBUR 6/99	21		
6	July 1985		14	EXCALIBUR 7/83	22		
7	REV TO 7-1-86	NCS	15	EXCALIBUR 7/04	23		
8	Revised to 7-27		16	EXCALIBUR 7/05	24		

KEY MAP



GRANT COUNTY
STATE OF WEST VIRGINIA
Office of Assessor

DISTRICT

MILROY

SHEET NO: 430

Date, Aerial: Photography: November, 1961 Date, Map: Dec., 1962
Photo No. Scale: 1" = 400'