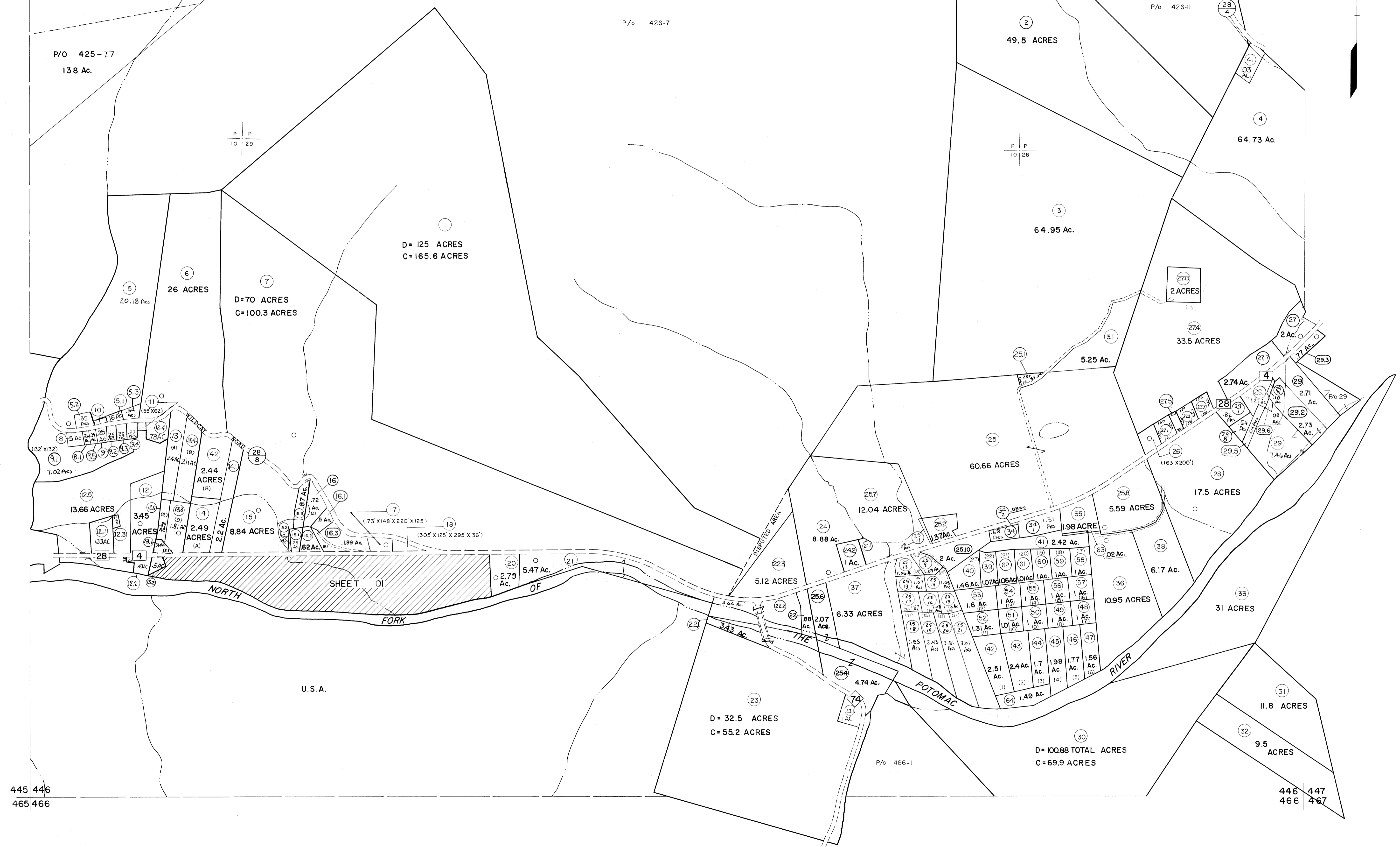


425 426
445 446

426 427
446 447



445 446
465 466

446 447
466 467

For Tax Purposes Only

Prepared by
MICHAEL BAKER, JR., INC.
Consulting Engineers
Rochester, Pennsylvania

Legend	
Property line	—
Edge of pavement or roadway	—
Corporation line	—
District line	—
County line	—
Original lot line	—
Deed lot number	(15)
Parcel or index number	(19)
Improvement	○
Railroad	—

Revisions	
1	MAY 23 1973 RBE
2	10/17/75 Hooper/K
3	Revised to 7-81
4	Revised to 7-82
5	REV. TO 7-1-83 NCS
6	REV. TO 7-1-84 NCS
7	July 1988
8	REV. TO 7-1-86 NCS
9	Revised to 7-87
10	REV. TO 7-19-89 R.E.B.
11	EXCALIBUR GRAPHICS 7/91
12	EXCALIBUR GRAPHICS 7/92
13	EXCALIBUR GRAPHICS 7/93
14	EXCALIBUR 11/99
15	EXCALIBUR 6/99
16	EXCALIBUR 7/03
17	Mapmaker 7-04
18	
19	
20	
21	
22	
23	
24	

KEY MAP

GRANT COUNTY
STATE OF WEST VIRGINIA
Office of Assessor

DISTRICT
MILROY

SHEET NO: 446

Date, Aerial Photography: November, 1961 Date, Map: Dec., 1962
Photo No: Scale: 1" = 400'