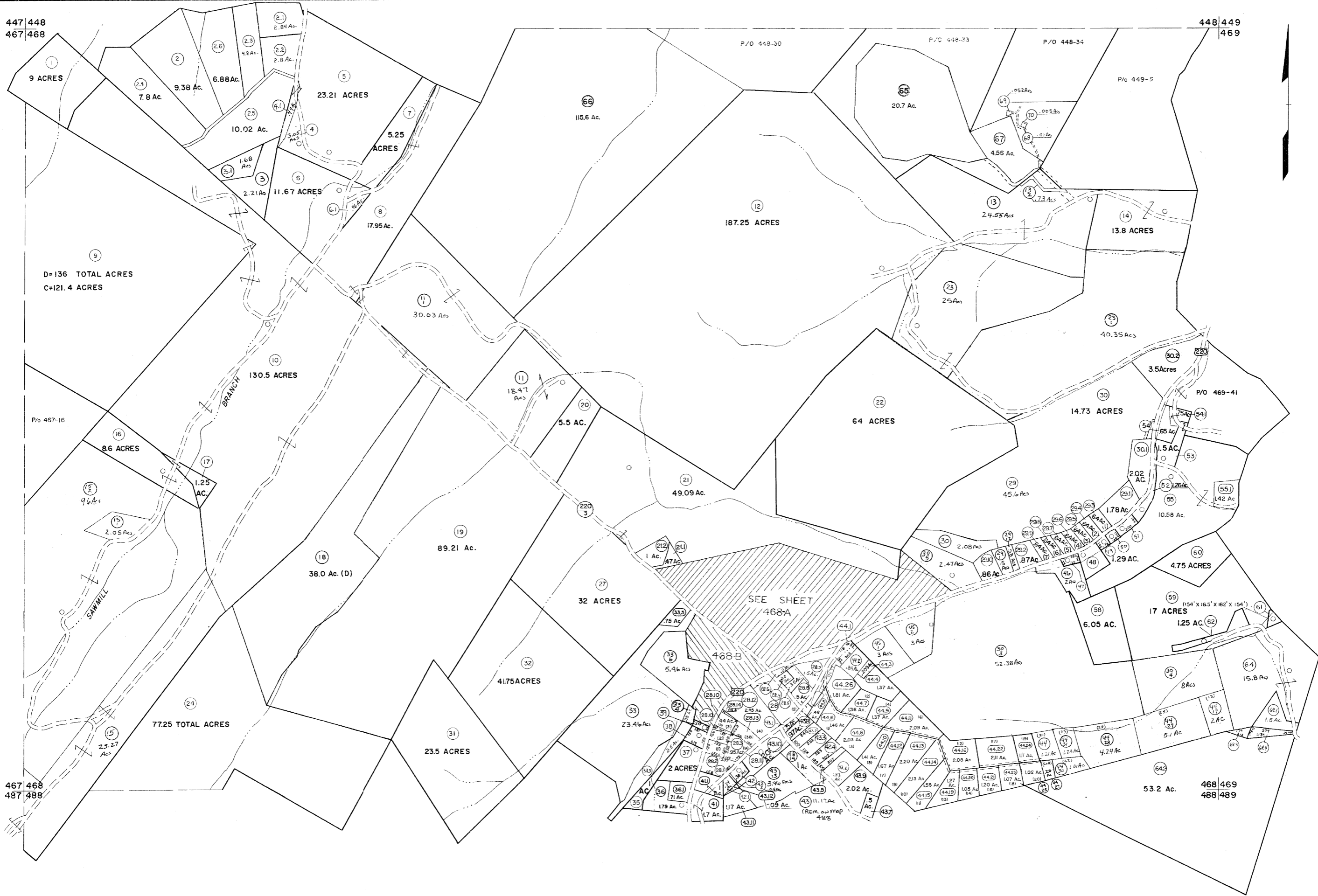


447 448
467 468

448 449
468 469



For Tax Purposes Only

Prepared by
MICHAEL BAKER, JR., INC.
Consulting Engineers
Rochester, Pennsylvania

Legend

Property line	-----	Original lot line	-----
Edge of pavement or roadway	-----	Deed lot number	(15)
Corporation line	-----	Parcel or index number	(99)
District line	-----	Improvement	o
County line	-----	Railroad	o

Revisions

1	5-22-63	9	Revised to 7-1-81	17	EXCALIBUR	7/03
2	10-18-74	10	Revised to 7-1-81	18	EXCALIBUR	7-04
3	9/27/76	11	EXCALIBUR GRAPHICS 7/91	19	EXCALIBUR	7/07
4	Revised to 7-81	12	EXCALIBUR GRAPHICS 7/92	20	EXCALIBUR	7/08
5	Revised to 7-81	13	EXCALIBUR GRAPHICS 7/93	21	EXCALIBUR	7/09
6	REVISED TO 7-1-83	14	EXCALIBUR 1/89	22		
7	REV. TO 7-1-86	15	EXCALIBUR 6/89	23		
8	REV. TO 7-1-86	16	EXCALIBUR 12/01	24		

KEY MAP



GRANT COUNTY
STATE OF WEST VIRGINIA
Office of Assessor

DISTRICT

MILROY

SHEET NO: 468

Date, Aerial Photography: November, 1961 Date, Map: Dec, 1962
Photo No: Scale: 1" = 400'