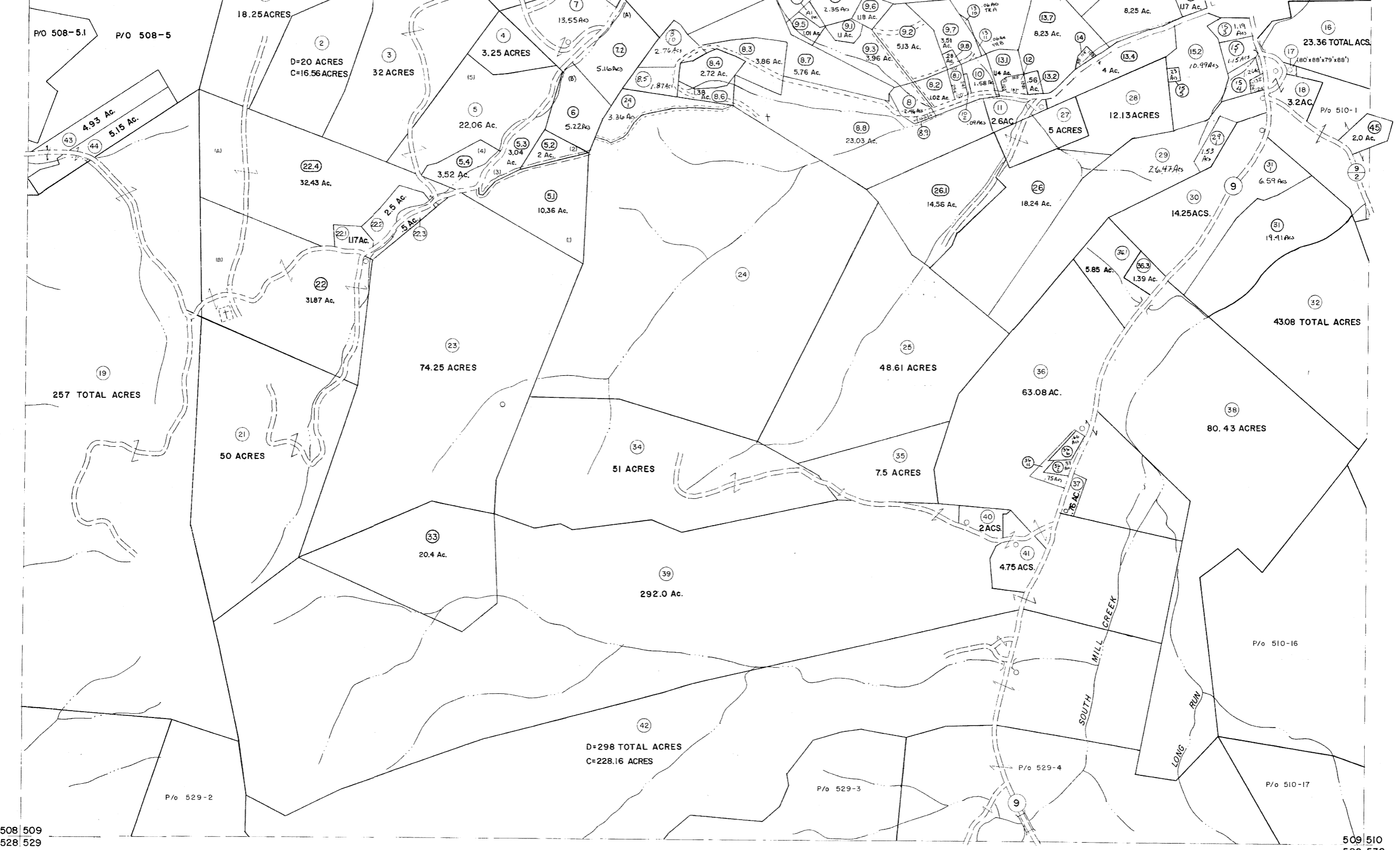


488 489
508 509

489 490
509 510

P/O 508-5.1 P/O 508-5



508 509
528 529

509 510
529 530

For Tax Purposes Only

Prepared by
MICHAEL BAKER, JR., INC.
Consulting Engineers
Rochester, Pennsylvania

Legend	
Property line	—————
Edge of pavement or roadway	—————
Corporation line	—————
District line	—————
County line	—————
Original lot line	—————
Dand lot number	(15)
Parcel or index number	(22)
Improvement	o
Railroad	—+—+—+—

Revisions			
1	REVISED TO 7-1-83	17	EXCALIBUR 07/07
2	REVISED TO 7-1-83	18	EXCALIBUR 07/09
3	REVISED TO 7-1-83	19	EXCALIBUR 07/09
4	REVISED TO 7-1-83	20	EXCALIBUR 07/09
5	REVISED TO 7-1-83	21	EXCALIBUR 07/09
6	REVISED TO 7-1-83	22	EXCALIBUR 07/09
7	REVISED TO 7-1-83	23	EXCALIBUR 07/09
8	REVISED TO 7-1-83	24	EXCALIBUR 07/09

KEY MAP

GRANT COUNTY
STATE OF WEST VIRGINIA
Office of Assessor

DISTRICT
MILROY

SHEET NO: 509

Date, Aerial Photography: Nov., 1961
Photo No: _____

Date, Map: Dec., 1962
Scale: 1" = 400'