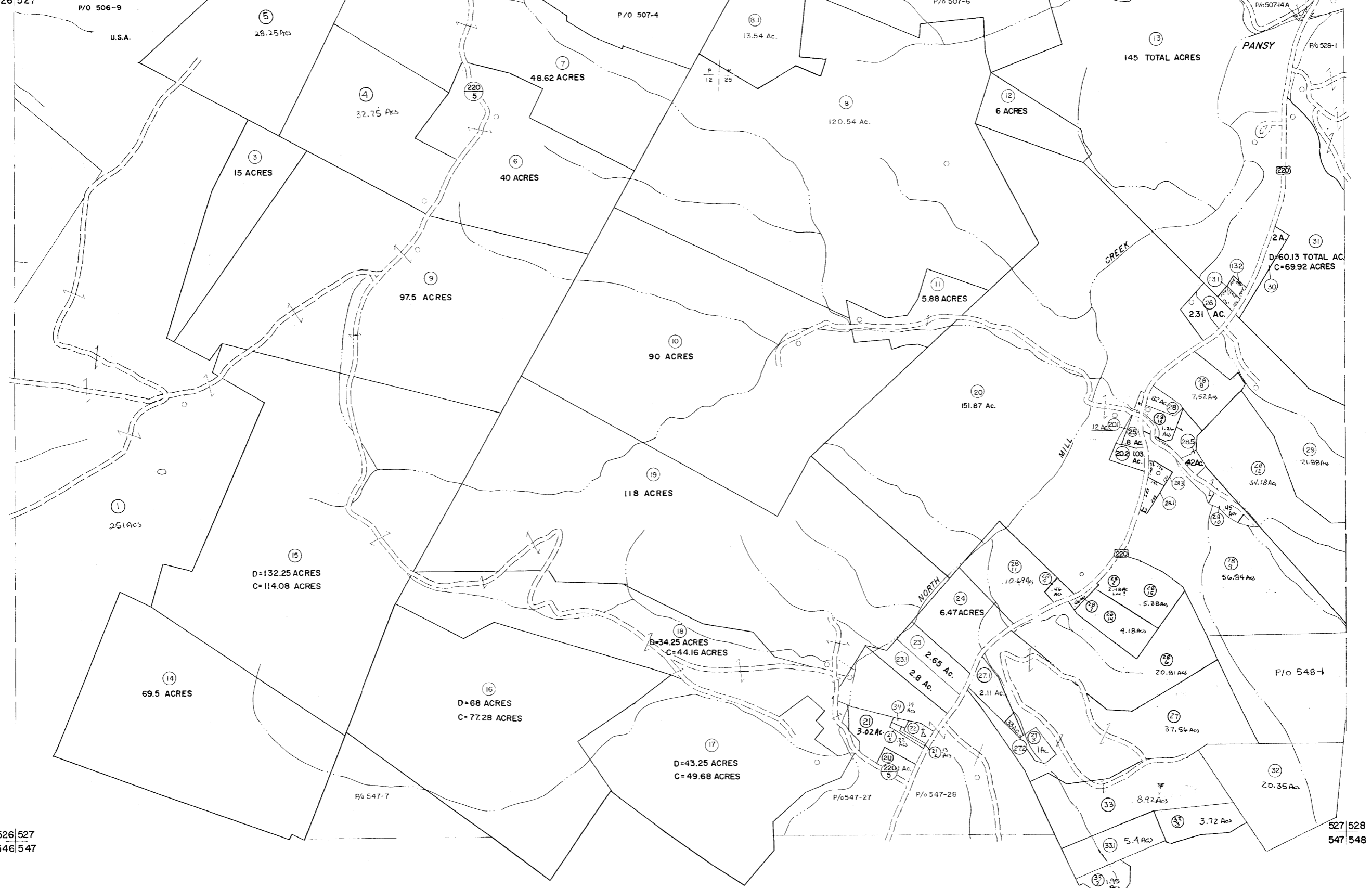


506 507
526 527

507 508
527 528



For Tax Purposes Only

Prepared by
MICHAEL BAKER, JR., INC.
Consulting Engineers
Rochester, Pennsylvania

Legend	
Property line	—
Edge of pavement or roadway	—
Corporation line	—
District line	—
County line	—
Original lot line	—
Dead lot number	(15)
Parcel or index number	(20)
Improvement	o
Railroad	—

Revisions			
1	5-22-88	5	Revised to 7-1-87
2	5-25-13	10	Revised to 7-1-87
3	12/14/14	11	EXCALIBUR GRAPHICS 7/91
4	Revised to 7-81	12	EXCALIBUR GRAPHICS 7/92
5	Revised to 7-82	13	EXCALIBUR 11/97
6	REVISED TO 7-1-83	14	EXCALIBUR 6/99
7	July 1997	15	EXCALIBUR 12/01
8	Revised to 7-1-85	16	EXCALIBUR 7/02
9	Revised to 7-1-87	17	EXCALIBUR 7-04
10	Revised to 7-1-87	18	EXCALIBUR 7/07
11	EXCALIBUR GRAPHICS 7/91	19	EXCALIBUR 7/08
12	EXCALIBUR GRAPHICS 7/92	20	EXCALIBUR 7/09
13	EXCALIBUR 11/97	21	
14	EXCALIBUR 6/99	22	
15	EXCALIBUR 12/01	23	
16	EXCALIBUR 7/02	24	

KEY MAP

GRANT COUNTY
STATE OF WEST VIRGINIA
Office of Assessor

DISTRICT
MILROY

SHEET NO: 527

Date, Aerial Photography: November, 1961 Date, Map: Dec., 1962
Photo No: Scale: 1" = 400'