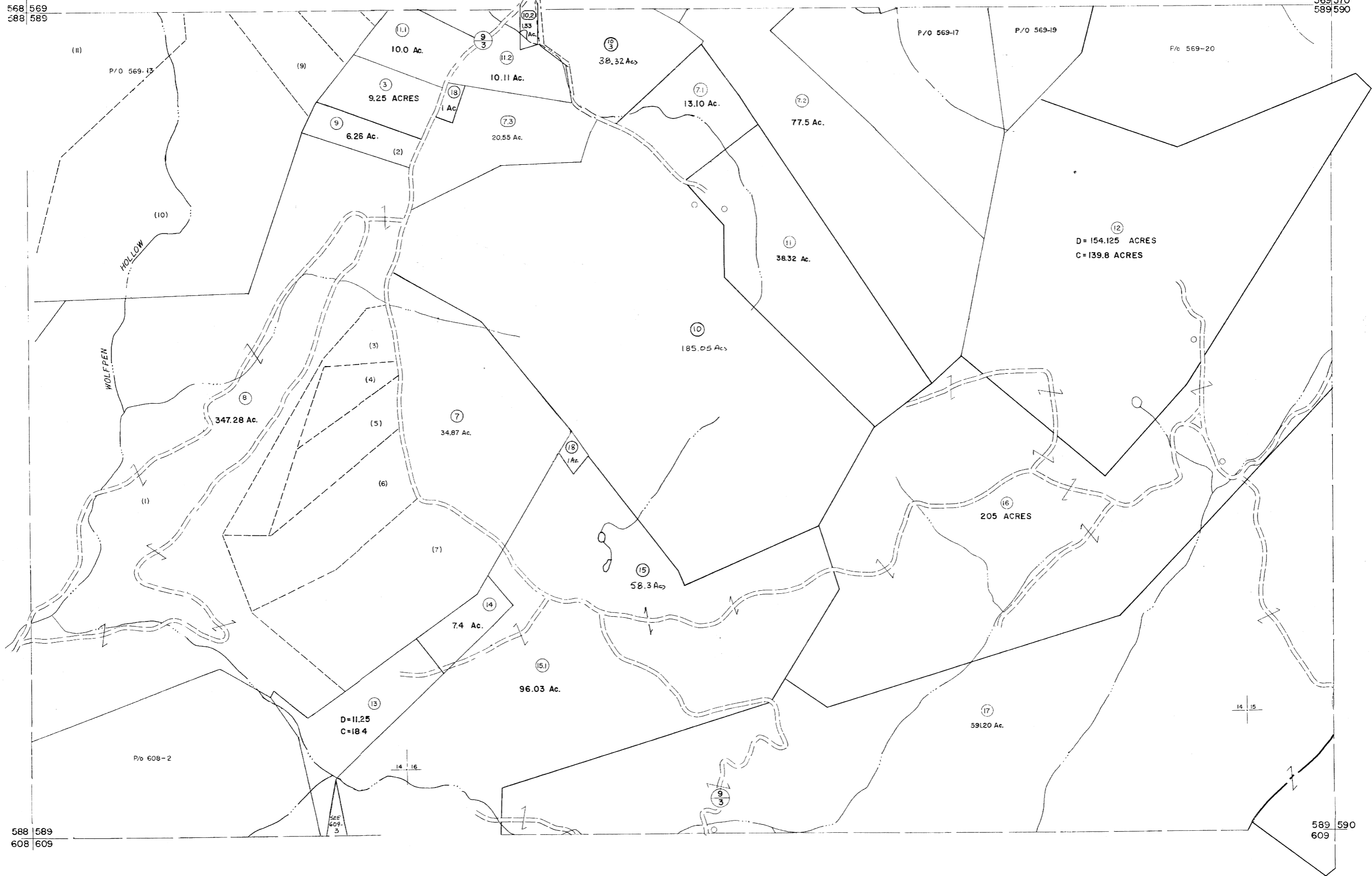


568 569
588 589

569 570
589 590



588 589
608 609

589 590
609

For Tax Purposes Only

Prepared by
MICHAEL BAKER, JR., INC.
Consulting Engineers
Rochester, Pennsylvania

Legend

Property line	—	Original lot line	—
Edge of pavement or roadway	—	Deed lot number	(15)
Corporation line	—	Parcel or index number	(9)
District line	—	Improvement	(3)
County line	—	Railroad	(R)

Revisions

1	MAY 25, 1923 DAE	9	EXCALIBUR 7/92	17
2	11/23/24 J.C.	10	EXCALIBUR GRAPHICS 7/91	18
3	11/23/24 J.C.	11	EXCALIBUR GRAPHICS 7/92	19
4	Revised to 7-1-83	12	EXCALIBUR GRAPHICS 7/93	20
5	Revised to 7-1-82	13	EXCALIBUR 6/79	21
6	REVISED TO 7-1-83	14	EXCALIBUR 12/01	22
7	Revised to 7-1-82	15	EXCALIBUR 7/07	23
8	Revised to 7-1-82	16		24

KEY MAP



GRANT COUNTY
STATE OF WEST VIRGINIA
Office of Assessor

DISTRICT

MILROY

SHEET NO: 589

Date, Aerial Photography: November, 1961 Date, Map: Dec, 1962
Photo No: Scale: 1" = 400'