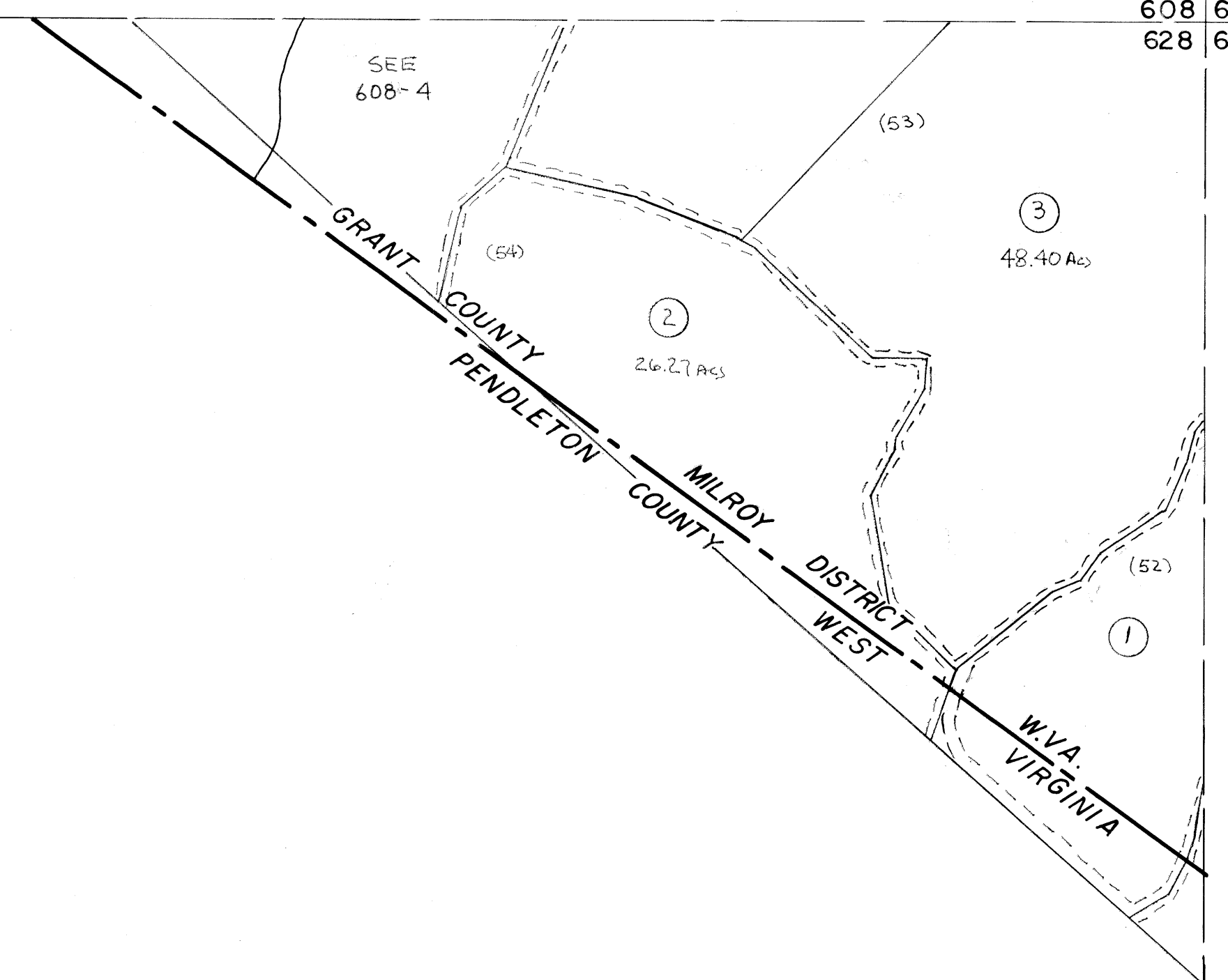


608
628

608 609
628 629



P
15 16

628

628 629

For Tax Purposes Only

Prepared by
MICHAEL BAKER, JR., INC.
Consulting Engineers
Rochester, Pennsylvania

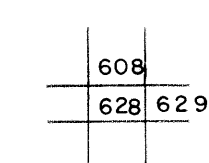
Legend

Property line	—————	Original lot line	-----
Edge of pavement or roadway	-----	Deed lot number	(15)
Corporation line	-----	Parcel or index number	(19)
District line	-----	Improvement	o
County line	-----	Railroad	+

Revisions

1	Revised to 7-81	9	17
2	Revised to 7-1-82	10	18
3	Revised to 7-1-82	11	19
4	EXCALIBUR 6/77	12	20
5		13	21
6		14	22
7		15	23
8		16	24

KEY MAP



GRANT COUNTY

STATE OF WEST VIRGINIA

Office of Assessor

DISTRICT

MILROY

SHEET NO: 628

Date, Aerial Photography: November, 1961 Date, Map: Dec., 1962
Photo No: Scale: 1" = 400'