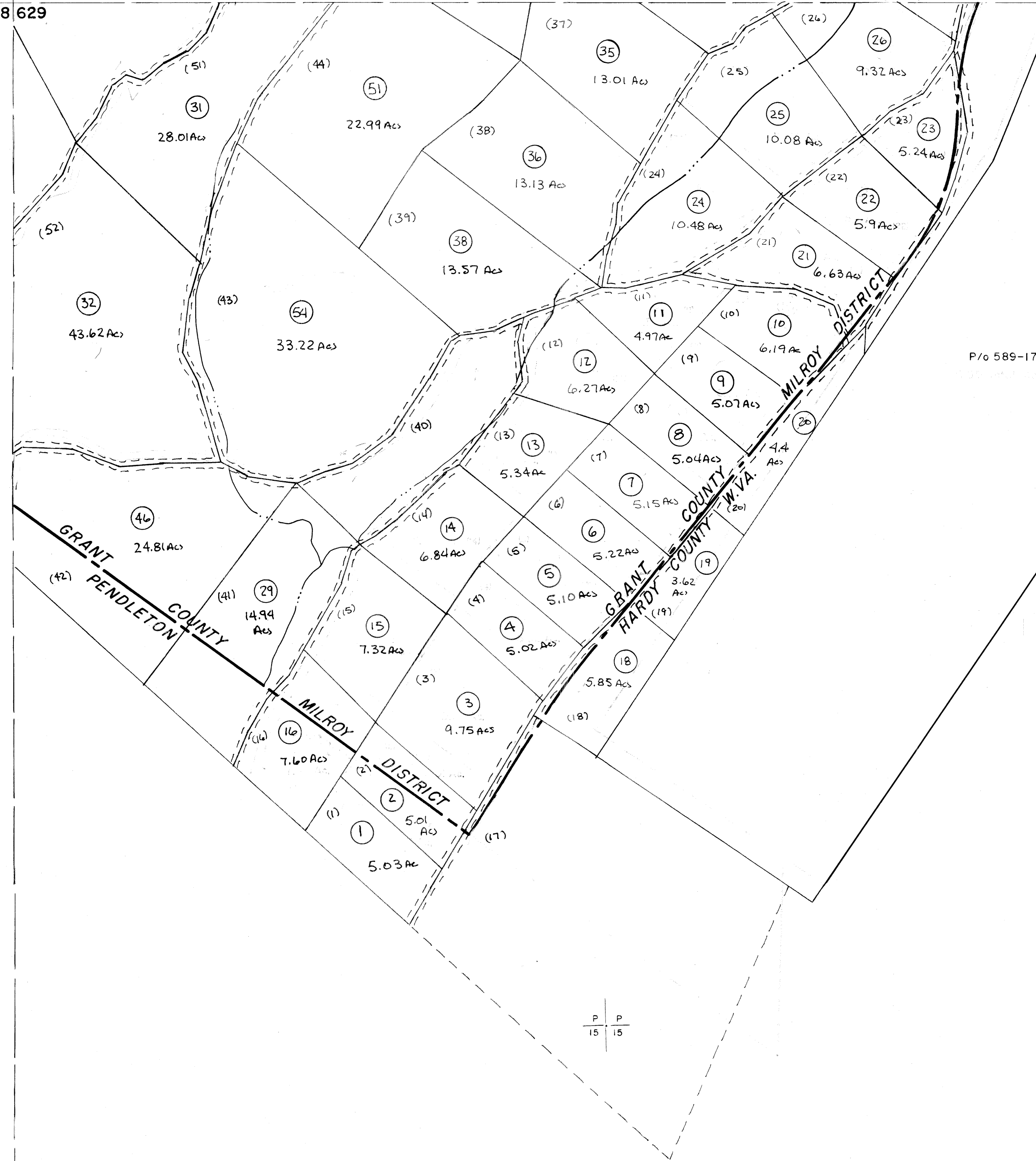


608 609
628 629

609
629



P/o 589-17

628 629

629

For Tax Purposes Only

Prepared by
MICHAEL BAKER, JR., INC.
Consulting Engineers
Rochester, Pennsylvania

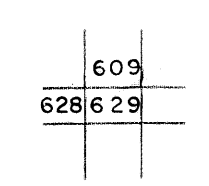
Legend

Property line	—————	Original lot line	-----
Edge of pavement or roadway	-----	Dead lot number	(15)
Corporation line	-----	Parcel or index number	(9)
District line	-----	Improvement	o
County line	-----	Railroad	+

Revisions

1	Revised to 7-8-20	9	17
2	Revised to 7-8-20	10	18
3	Revised to 7-8-20	11	19
4	EXCALIBUR GRAPHICS 7/93	12	20
5	EXCALIBUR 6/99	13	21
6		14	22
7		15	23
8		16	24

KEY MAP



GRANT COUNTY
STATE OF WEST VIRGINIA
Office of Assessor

DISTRICT

MILROY

SHEET NO: 629

Date, Aerial Photography: November, 1961 Date, Map: Dec, 1962
Photo No: Scale: 1" = 400'