

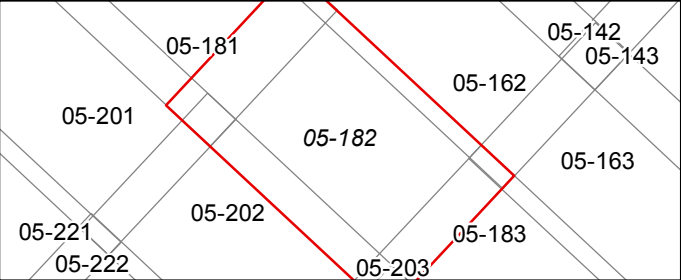
FOR TAX PURPOSES ONLY

Prepared By:
Ralph Layton
Grant County Assessor

- Legend**
- Property Line
 - Road Right of Way
 - Corporation Line
 - District Line
 - County Line
 - Original Lot Line
 - Lot Number
 - Parcel Number
 - Water
 - Railroad

R e v i s i o n s	1	Revised 10/1/16	9		17	
	2	Revised 12/30/16	10		18	
	3		11		19	
	4		12		20	
	5		13		21	
	6		14		22	
	7		15		23	
	8		16		24	

STATE OF WEST VIRGINIA
COUNTY OF GRANT
Office of Assessor



UNION
Map: 182

Date, Aerial Photography: 2015
Date, Map: 1/25/2017
Scale: 1" = 400'