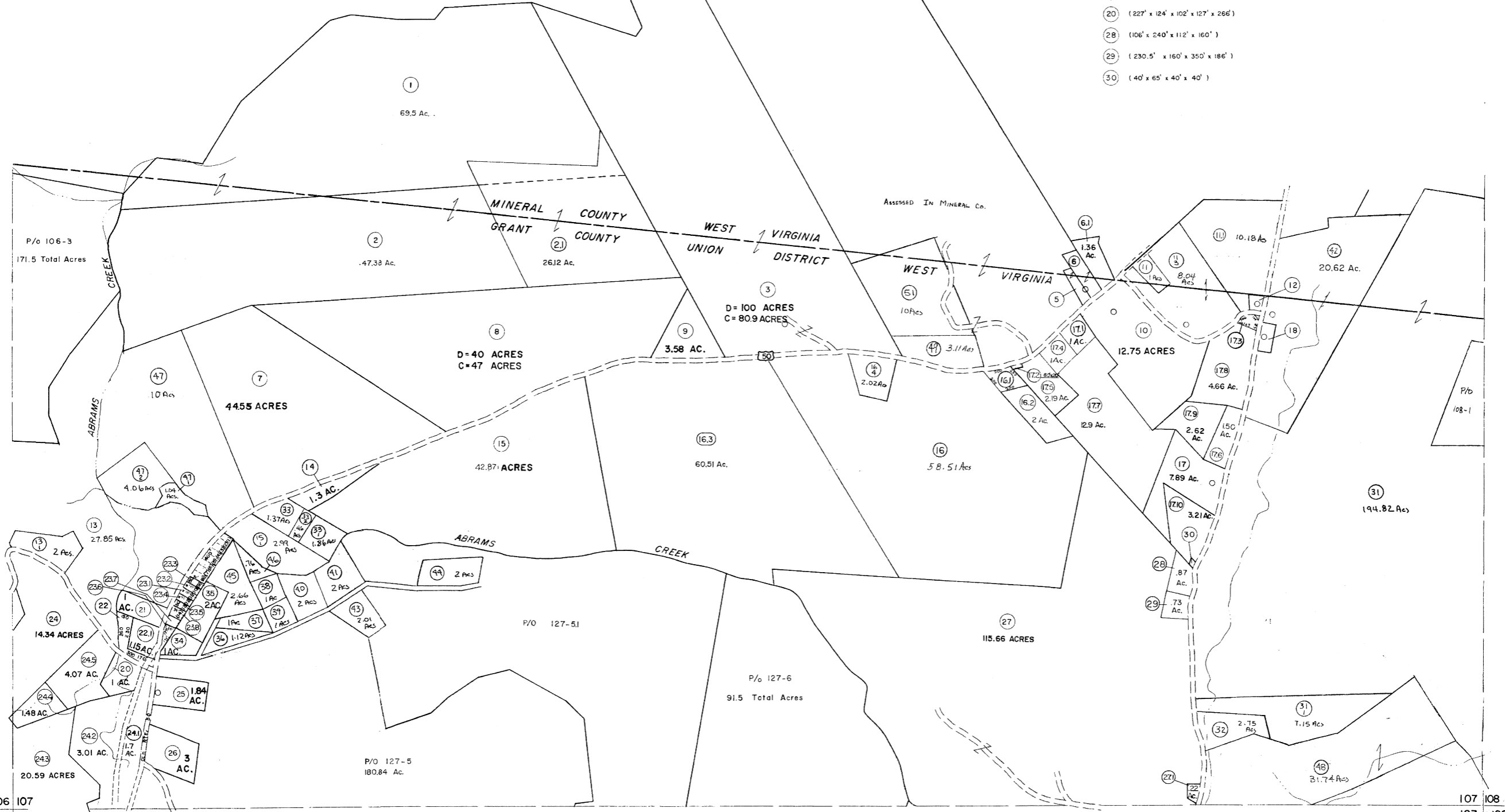


106 107

107 108

- 5 (67' x 330.4' x 54' x 312.5')
- 6 (100' x 409.5' x 109' x 375')
- 12 (118' x 87' x 123' x 137.4')
- 18 (104.4' x 208.75')
- 20 (227' x 124' x 102' x 127' x 266')
- 28 (106' x 240' x 112' x 160')
- 29 (230.5' x 160' x 350' x 186')
- 30 (40' x 65' x 40' x 40')



106 107  
126 127

107 108  
127 128

For Tax Purposes Only

Prepared by  
MICHAEL BAKER, JR., INC.  
Consulting Engineers  
Rochester, Pennsylvania

Legend	
Property line	—
Edge of pavement or roadway	- - - - -
Corporation line	— · — · —
District line	- - - - -
County line	— · — · —
Original lot line	— (15) —
Deed lot number	(15)
Parcel or index number	(15)
Improvement	○
Railroad	— + — + —

Revisions			
1	5-17-73 - D.W.V.	9	REV. TO 7-19-89 R.E.B.
2	MAR 75 PAM	10	EXCALIBUR GRAPHICS 7/91
3	JULY 1981 TRL	11	EXCALIBUR GRAPHICS 7/93
4	JULY 1982 TRL	12	EXCALIBUR 6-98
5	REV. TO 7-1-83 NCS	13	EXCALIBUR 7/01
6	July 1987	14	EXCALIBUR 12-01
7	REV. TO 7-1-85 NCS	15	EXCALIBUR 7-03
8	July 1986 TRL	16	EXCALIBUR 7-05

KEY MAP

**GRANT COUNTY**  
STATE OF WEST VIRGINIA  
Office of Assessor

DISTRICT **UNION**

**SHEET NO: 107**

Data, Aerial Photography: Nov., 1961 Date, Map: Dec., 1962  
Photo No. Scale: 1" = 400'