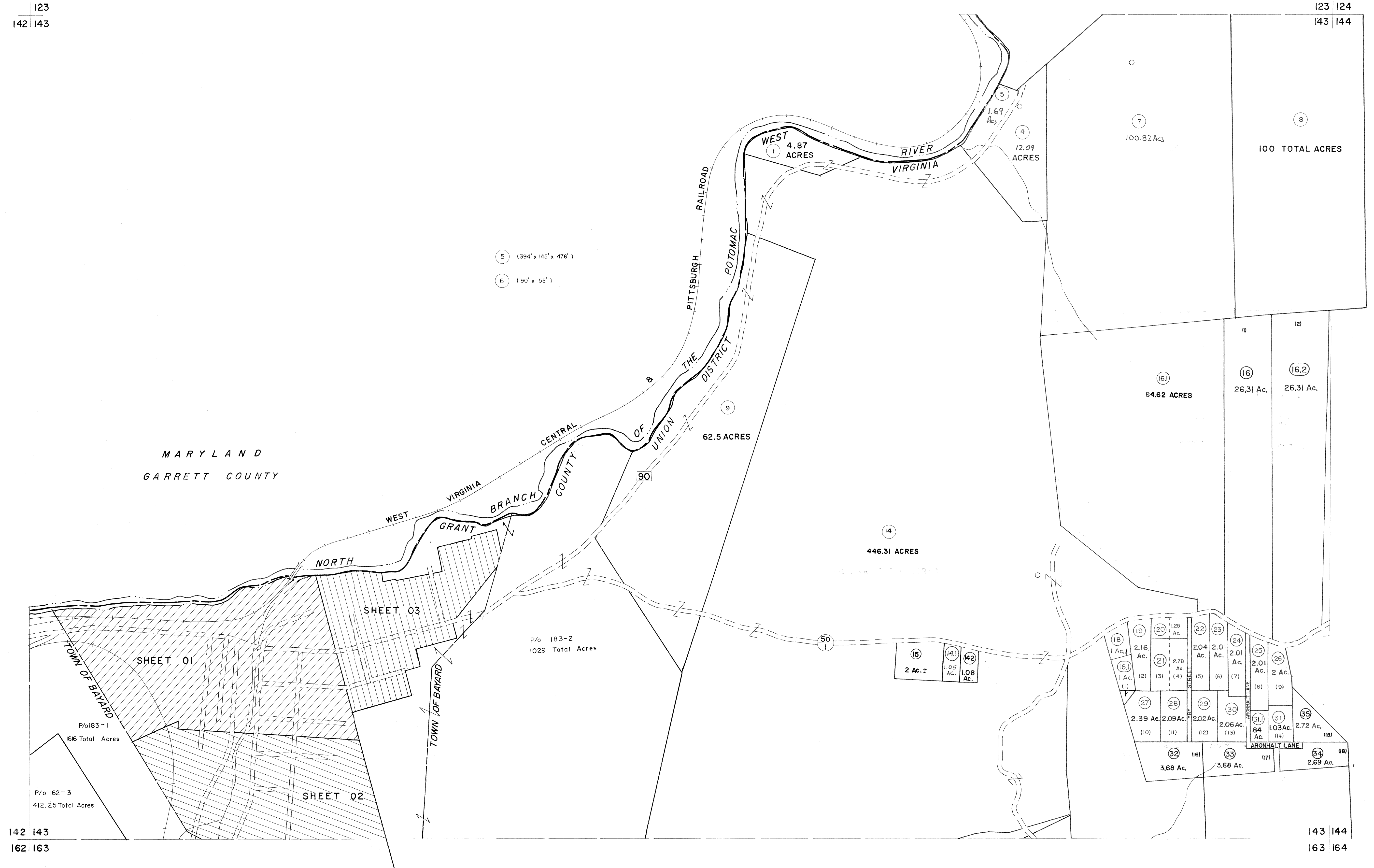


123  
142 143

123 124  
143 144



For Tax Purposes Only

Prepared by  
MICHAEL BAKER, JR., INC.  
Consulting Engineers  
Rochester, Pennsylvania

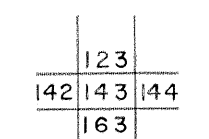
Legend

Property line	—	Original lot line	—
Edge of pavement or roadway	---	Deed lot number	(15)
Corporation line	- - - -	Parcel or index number	(22)
District line	- - - -	Improvement	o
County line	- - - -	Railroad	—

Revisions

1	5-18-73 - D.W.V.	9	EXCALIBUR GRAPHICS 7/92	17
2	REV. TO 7/81 DR. 3/82 NS	10	EXCALIBUR GRAPHICS 7/93	18
3	JULY 1982 TRL	11	EXCALIBUR 7/93	19
4	July 1984 TRL	12	EXCALIBUR 07/07	20
5	July 1986 TRL	13		21
6	Revised to 7-1-87	14		22
7	Rev. to 7-19-89 R.E.B.	15		23
8	EXCALIBUR GRAPHICS 7/91	16		24

KEY MAP



GRANT COUNTY  
STATE OF WEST VIRGINIA  
Office of Assessor

DISTRICT UNION

SHEET NO: 143

Date, Aerial Photography: Nov., 1961 Date, Map: Dec., 1962  
Photo No: Scale: 1" = 400'