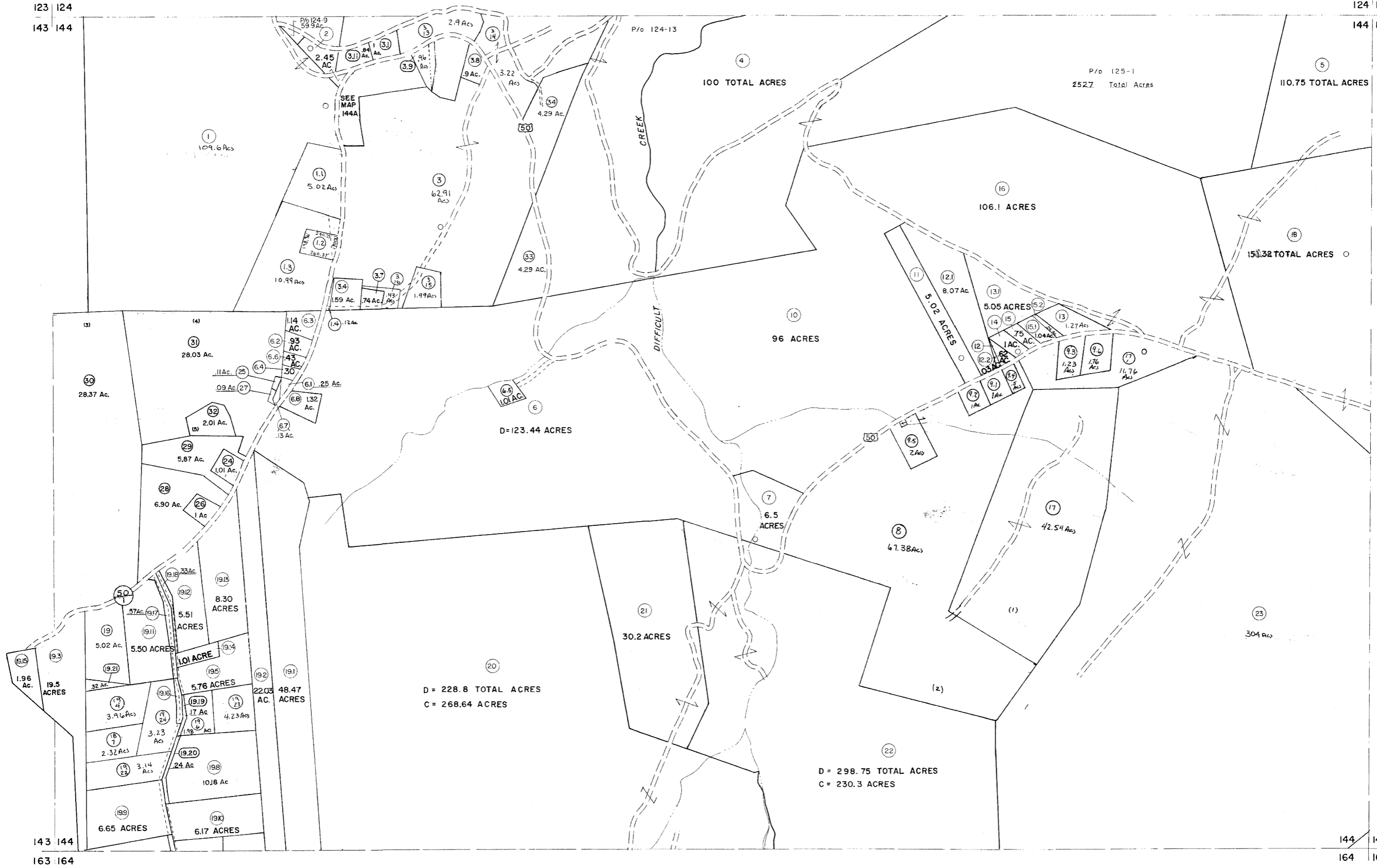


123 124

124 125

143 144

144 145



For Tax Purposes Only

Prepared by  
MICHAEL BAKER, JR., INC.  
Consulting Engineers  
Rochester, Pennsylvania

Legend

Property line	---	Original lot line	---
Edge of pavement or roadway	---	Deed lot number	(15)
Corporation line	---	Parcel or index number	(16)
District line	---	Improvement	o
County line	---	Railroad	---

Revisions

1	5-22-83	9	July, 1985	TRL	37	EXCALIBUR 7/89
2	5-19-73-D.W.V.	10	Revised to 7-1-87	DAF	18	
3	3-4-75	11	REV. TO 7-19-89	R.E.B.	19	
4	11/19/74	12	EXCALIBUR GRAPHICS 7/91	J.C.	20	
5	REV. TO 7/81 DR. 3/82 NS	13	EXCALIBUR GRAPHICS 7/93	J.C.	21	
6	JULY 1982	14	EXCALIBUR 12-01	TRL	22	
7	REV. TO 7-1-83	15	EXCALIBUR 7/03	NCS	23	
8	REV. TO 7-1-85	16	EXCALIBUR 7/77	NCS	24	

KEY MAP



GRANT COUNTY  
STATE OF WEST VIRGINIA  
Office of Assessor

DISTRICT

UNION

SHEET NO: 144

Date, Aerial Photography: Nov. 1961 Date, Map/Dec, 1962  
Photo No. Scale: 1" = 400'