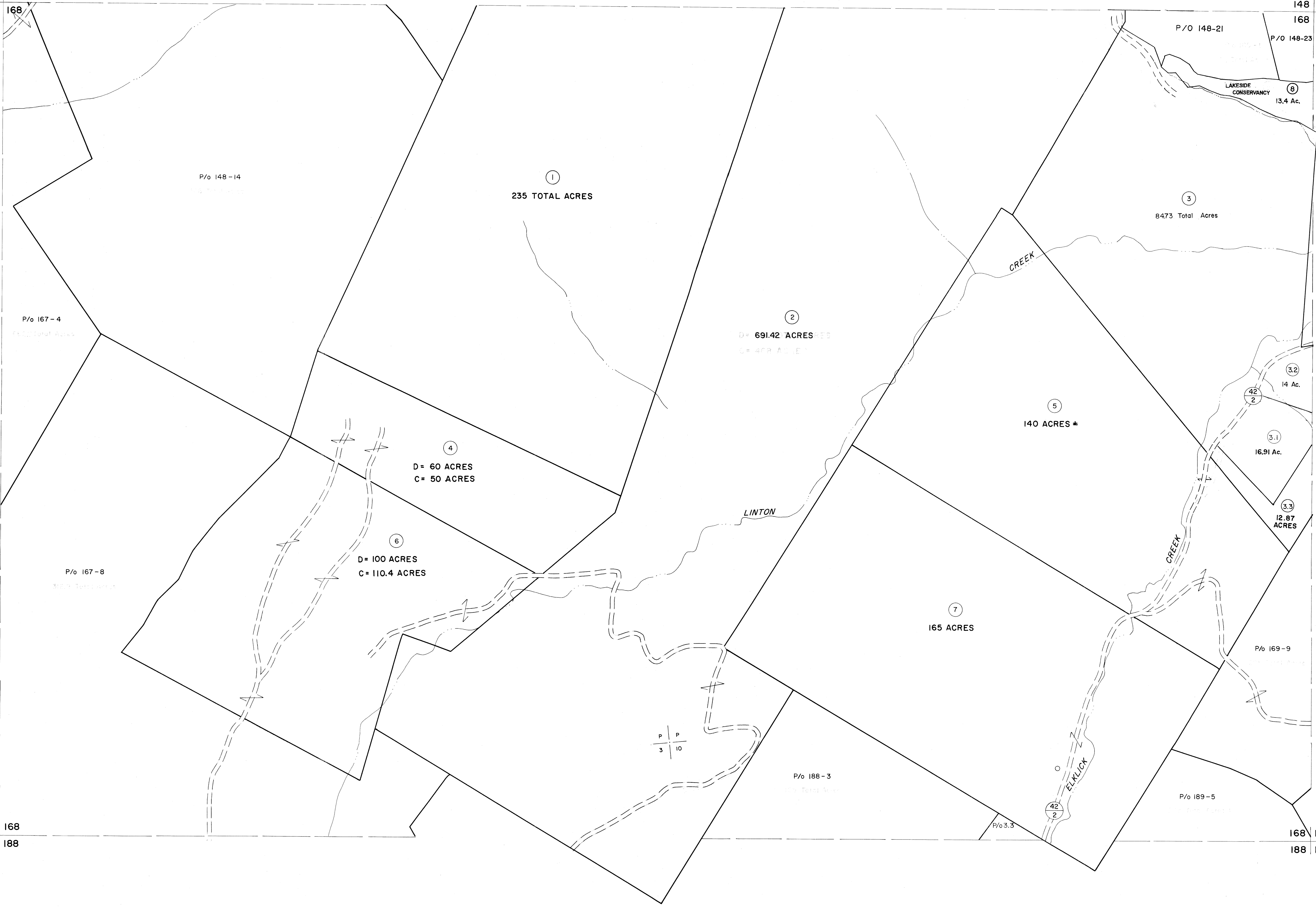


147 148  
167 168

148 149  
168 169

167 168  
187 188

168 169  
188 189

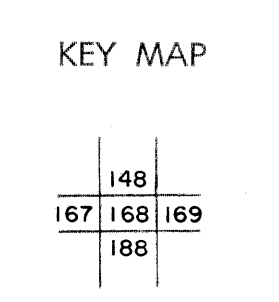


For Tax Purposes Only

Prepared by  
**MICHAEL BAKER, JR., INC.**  
 Consulting Engineers  
 Rochester, Pennsylvania

Legend	
Property line	—————
Edge of pavement or roadway	—————
Corporation line	—————
District line	—————
County line	—————
Original lot line	-----
Dead lot number	(15)
Parcel or index number	(22)
Improvement	o
Railroad	—+—+—+—

Revisions					
1	5-22-63	9		17	
2	REV. TO 7/81 DR. 3/82 NS	10		18	
3	JULY, 1982 TRL	11		19	
4	JULY, 1986 TRL	12		20	
5	REV. TO 7-19-89 R.E.B.	13		21	
6	EXCALIBUR GRAPHICS 7/91	14		22	
7	EXCALIBUR GRAPHICS 7/92	15		23	
8		16		24	



**GRANT COUNTY**  
 STATE OF WEST VIRGINIA  
 Office of Assessor

DISTRICT	UNION
SHEET NO: 168	
Date, Aerial Photography: Nov, 1961	Date, Map: Dec, 1962
Photo No:	Scale: 1" = 400'