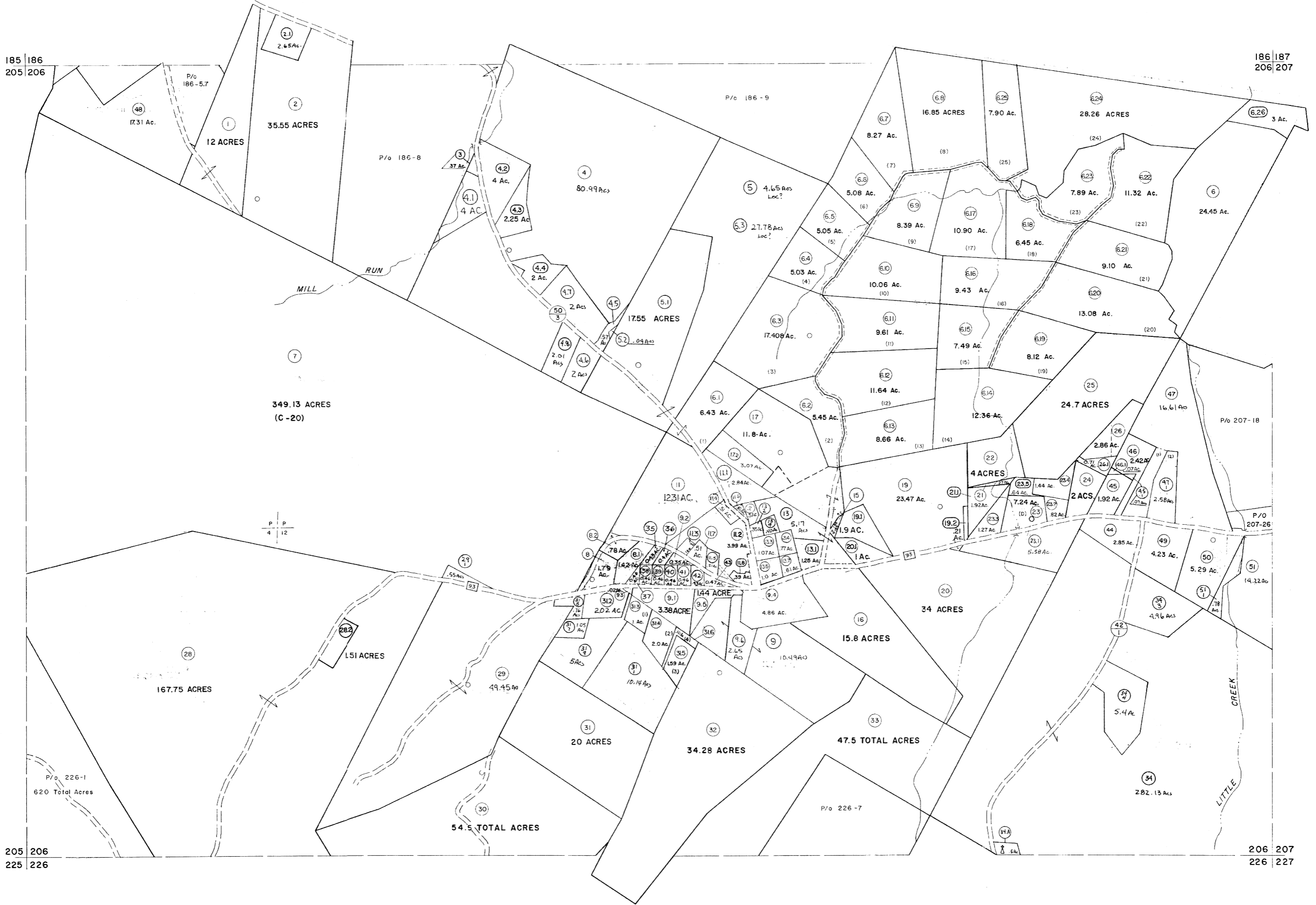


185 | 186
205 | 206

186 | 187
206 | 207



P P
4 12

205 | 206
225 | 226

206 | 207
226 | 227

For Tax Purposes Only

Prepared by
MICHAEL BAKER, JR., INC.
Consulting Engineers
Rochester, Pennsylvania

Legend

Property line	---	Original lot line	---
Edge of pavement or roadway	---	Dead lot number	---
Corporation line	---	Parcel or index number	---
District line	---	Improvement	---
County line	---	Railroad	---

Revisions

1	5-22-83	9	July, 1986	TRL	17	EXCALIBUR 7-04
2	5-22-83 D.M.V.	10	Revised to 7-1-87	RES	18	EXCALIBUR 7105
3	3-4-75 T.G.	11	REV. TO 7-19-89	RES	19	EXCALIBUR 87107
4	Revised to 7-81	12	EXCALIBUR GRAPHICS 7/91		20	EXCALIBUR 7109
5	JULY, 1982	13	EXCALIBUR GRAPHICS 7/92		21	
6	REV TO 7-1-83	14	EXCALIBUR GRAPHICS 7/93		22	
7	July, 1984	15	EXCALIBUR 6/93		23	
8	Revised to 7-1-85	16	EXCALIBUR 12-01		24	

KEY MAP

186
205 | 206 | 207
225

GRANT COUNTY
STATE OF WEST VIRGINIA
Office of Assessor

DISTRICT

UNION

SHEET NO: 206

Date, Aerial Photography: Nov., 1961 Date, Map: Dec., 1962
Photo No: Scale: 1" = 400'