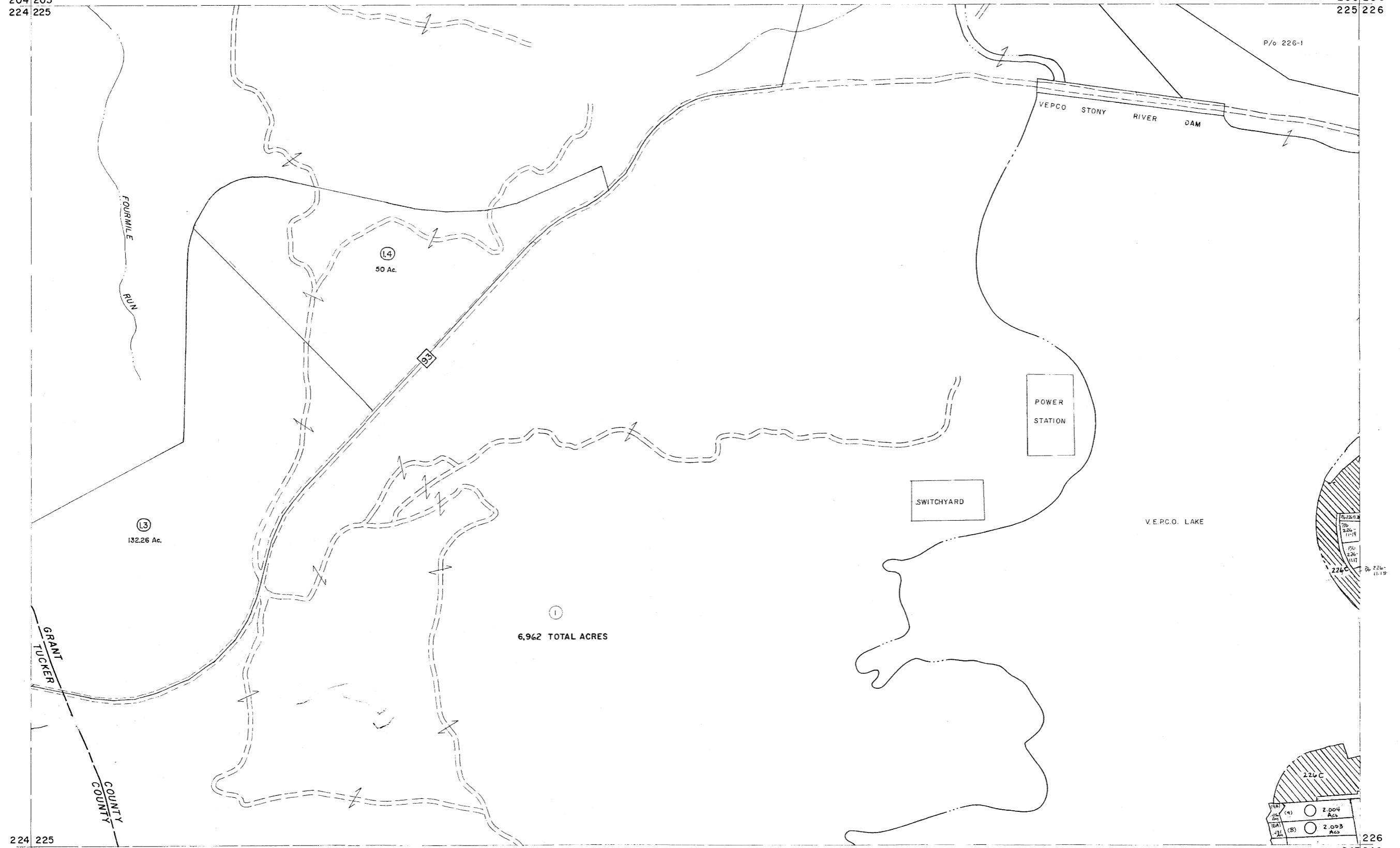


204 205
224 225

205 206
225 226



224 225
244 245

226
245 246

For Tax Purposes Only

Prepared by
MICHAEL BAKER, JR., INC.
Consulting Engineers
Rochester, Pennsylvania

Legend

| | | | |
|-----------------------------|-----|------------------------|------|
| Property line | --- | Original lot line | --- |
| Edge of pavement or roadway | --- | Deed lot number | (15) |
| Corporation line | --- | Parcel or index number | (99) |
| District line | --- | Improvement | o |
| County line | --- | Railroad | o |

Revisions

| | | | |
|---|-------------------|----|----|
| 1 | 5-22-72 D.W.V. | 9 | 17 |
| 2 | Revised to 7-81 | 10 | 18 |
| 3 | JULY 1982 | 11 | 19 |
| 4 | Revised to 7-1989 | 12 | 20 |
| 5 | EXEMPT 7/109 | 13 | 21 |
| 6 | | 14 | 22 |
| 7 | | 15 | 23 |
| 8 | | 16 | 24 |

KEY MAP



GRANT COUNTY
STATE OF WEST VIRGINIA
Office of Assessor

DISTRICT

UNION

SHEET NO: 225

Date, Aerial Photography: November, 1961 Date, Map: Dec., 1962
Photo No: Scale: 1" = 400'