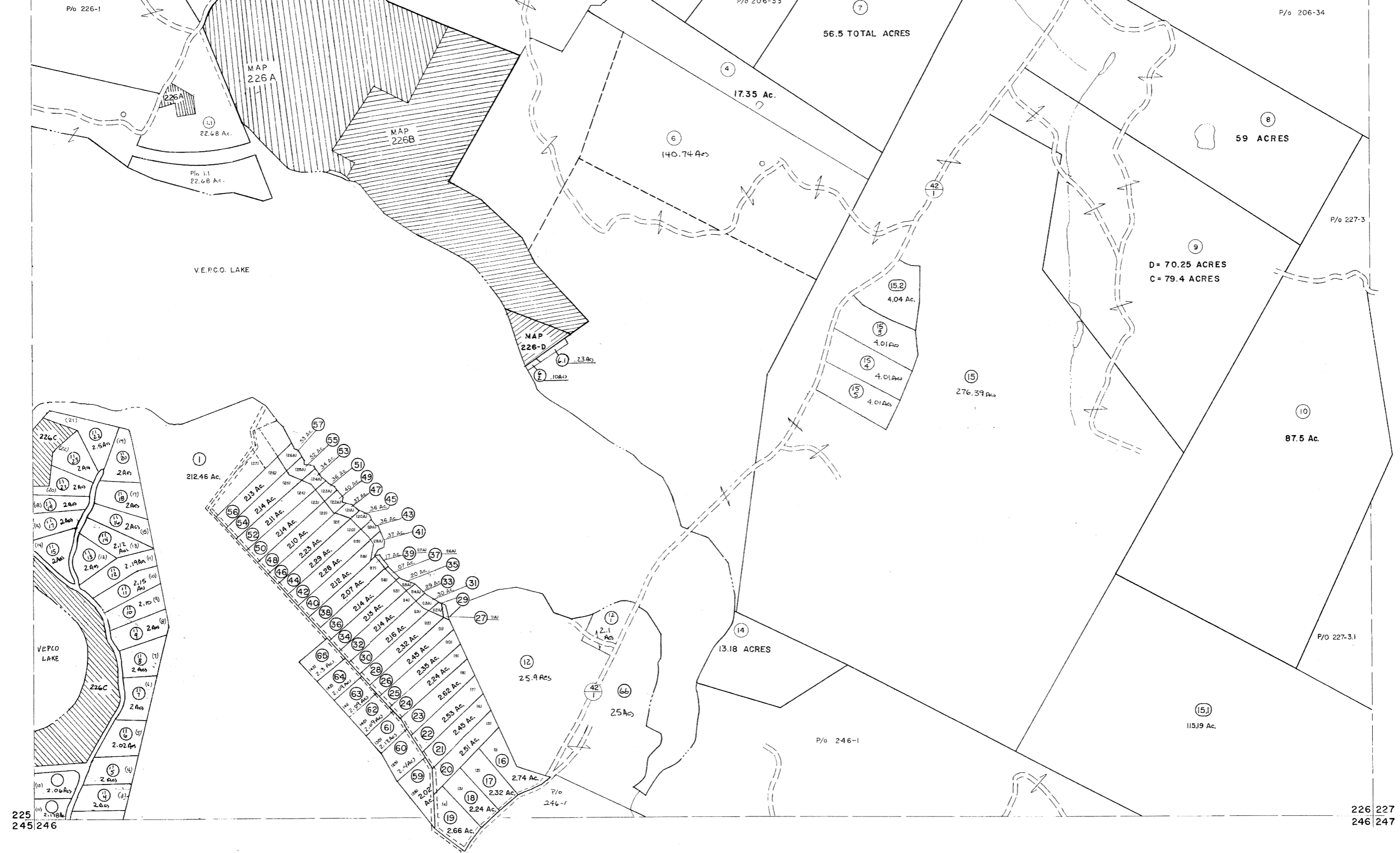


205 206
225 226

206 207
226 227



225 245
246 246

226 227
246 247

For Tax Purposes Only

Prepared by
MICHAEL BAKER, JR., INC.
Consulting Engineers
Rochester, Pennsylvania

Legend

Property line	---	Original lot line	---
Edge of pavement or roadway	---	Deed lot number	(15)
Corporation line	---	Parcel or index number	(22)
District line	---	Improvement	o
County line	---	Railroad	---

Revisions

1	5-22-63	9	EXCALIBUR GRAPHICS 7/92	17
2	5-23-75 D.M.V.	10	EXCALIBUR GRAPHICS 7/93	18
3	3/2/75	11	EXCALIBUR	19
4	9/1/76	12	EXCALIBUR	20
5	Revised to 7-81	13	EXCALIBUR	21
6	7/1/84	14	EXCALIBUR	22
7	7/1/87	15	EXCALIBUR	23
8	EXCALIBUR GRAPHICS 7/91	16	EXCALIBUR	24

KEY MAP



GRANT COUNTY
STATE OF WEST VIRGINIA
Office of Assessor

DISTRICT

UNION

SHEET NO: 226

Date, Aerial Photography, November, 1961 Date, Map, Dec, 1962
Photo No: Scale: 1" = 400'