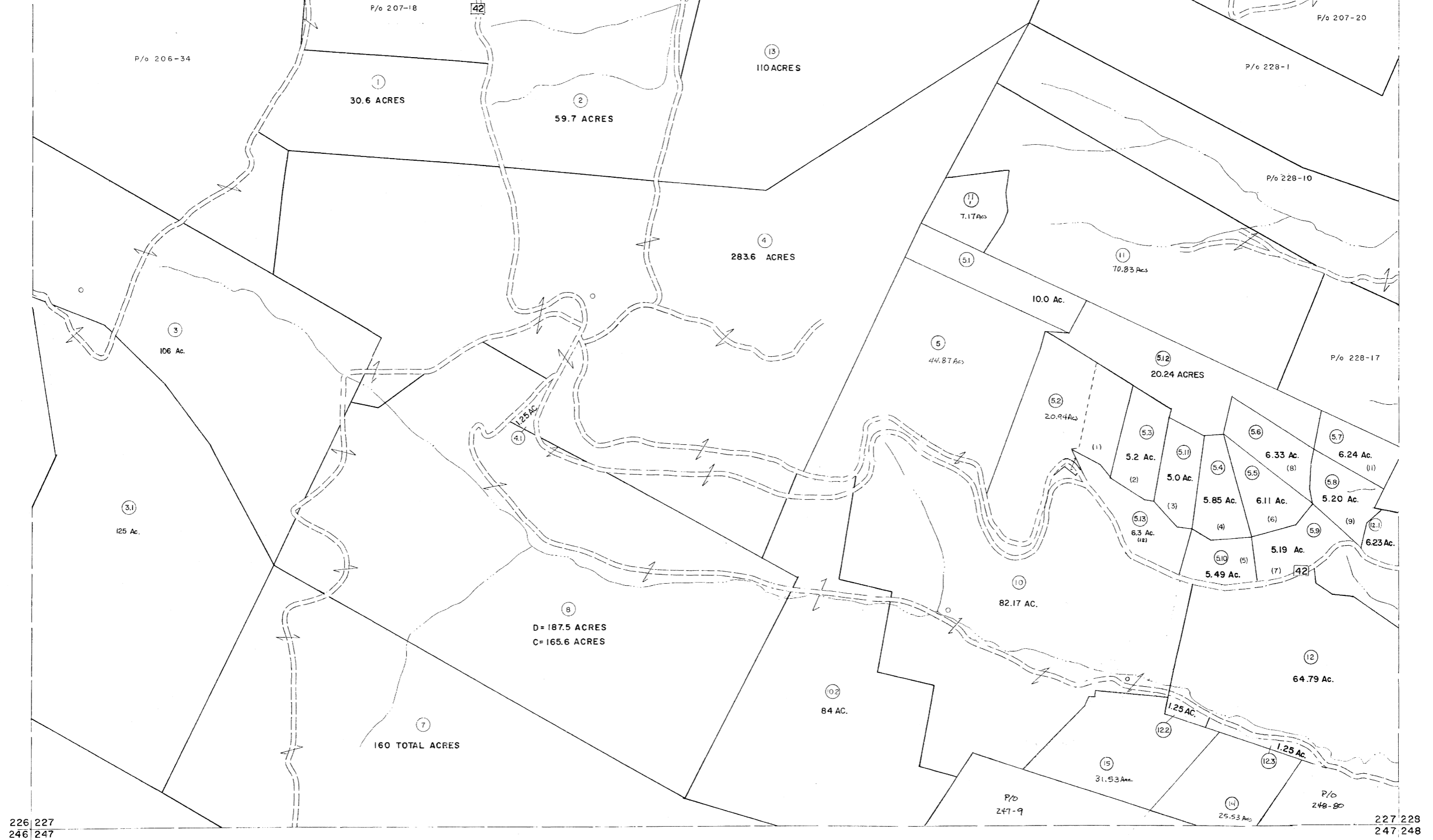


206 207
226 227

207 208
227 228



226 227
246 247

227 228
247 248

For Tax Purposes Only
 Prepared by
MICHAEL BAKER, JR., INC.
 Consulting Engineers
 Rochester, Pennsylvania

Legend	
Property line	—————
Edge of pavement or roadway	—————
Corporation line	—————
District line	—————
County line	—————
Original lot line	—————
Deed lot number	(15)
Parcel or index number	(99)
Improvement	o
Railroad	—————

Revisions			
1	5-23-73 D.M.V.	9	Revised to 7-1-80
2	3-9-75 DAE	10	Excavator 6/99
3	Revised to 7-81	11	Excavator 7/03
4	JULY 1982	12	Excavator 7-04
5	REV. TO 7-1-83	13	Excavator 7-09
6	Revised to 7-1-85	14	
7	July 1986	15	
8	Revised to 7-1-87	16	

KEY MAP	
207	227
226	228
247	248

GRANT COUNTY
 STATE OF WEST VIRGINIA
 Office of Assessor

DISTRICT	
UNION	
SHEET NO: 227	
Date, Aerial Photography: November, 1961	Date, Map: Dec., 1962
Photo No:	Scale: 1" = 400'