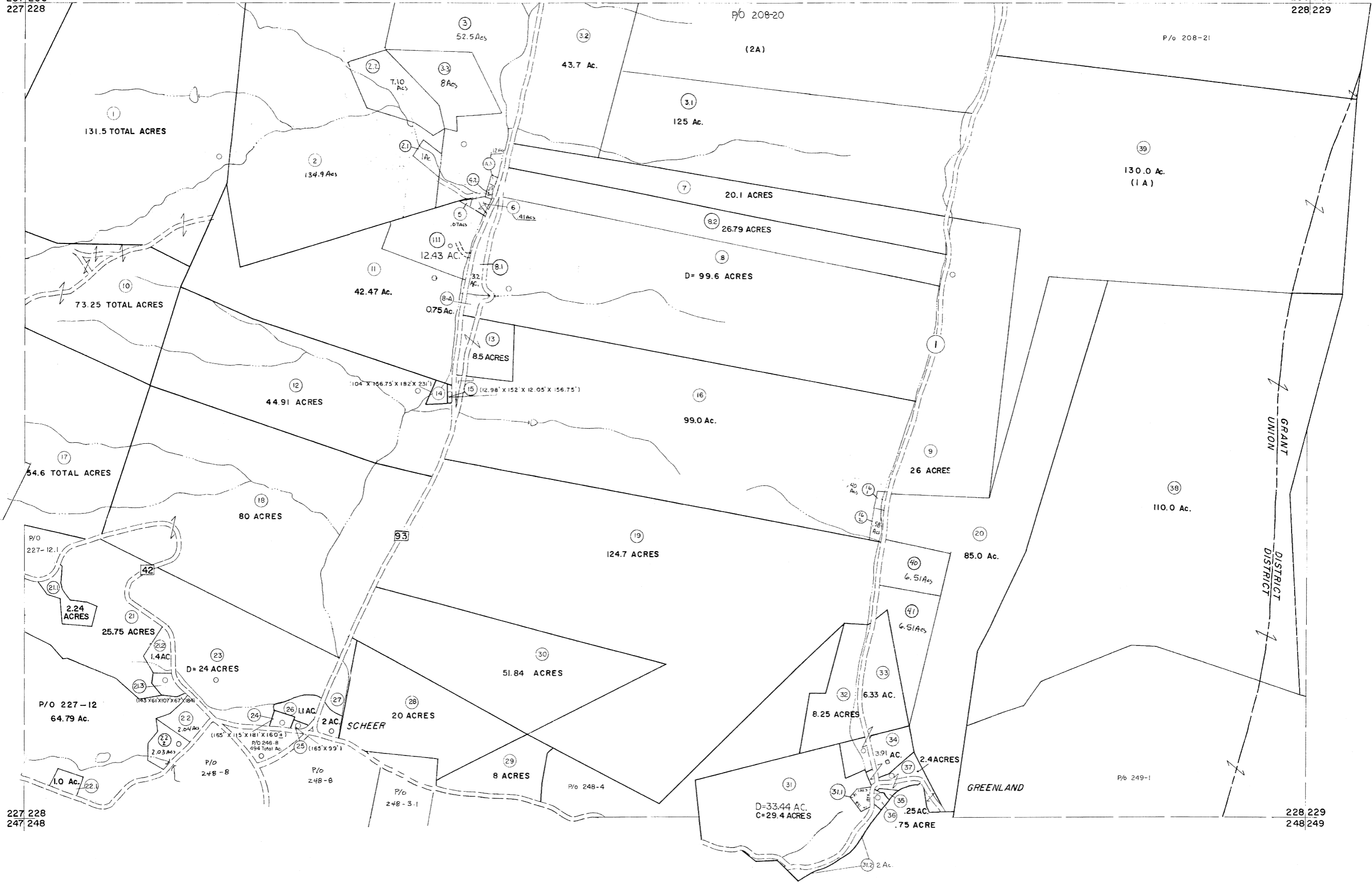


207 208
227 228

208 209
228 229



For Tax Purposes Only
 Prepared by
MICHAEL BAKER, JR., INC.
 Consulting Engineers
 Rochester, Pennsylvania

Legend

| | | | |
|-----------------------------|---|------------------------|------|
| Property line | — | Original lot line | — |
| Edge of pavement or roadway | — | Deed lot number | (15) |
| Corporation line | — | Parcel or index number | (22) |
| District line | — | Improvement | o |
| County line | — | Railroad | — |

Revisions

| | | | | | | |
|---|-----------------|--------|----|-----------|-------|----|
| 1 | 5-23-73 | D.W.V. | 9 | EXCALIBUR | 7/03 | 17 |
| 2 | MAR 75 | DAM | 10 | EXCALIBUR | 7/04 | 18 |
| 3 | Revised to 7-81 | SDP | 11 | EXCALIBUR | 07/07 | 19 |
| 4 | JULY 1982 | TRL | 12 | EXCALIBUR | 7/08 | 20 |
| 5 | REV TO 7-1-83 | NCS | 13 | EXCALIBUR | 7/09 | 21 |
| 6 | Revised to 7-85 | SDP | 14 | | | 22 |
| 7 | Revised to 7-87 | SDP | 15 | | | 23 |
| 8 | EXCALIBUR | 6/99 | 16 | | | 24 |



GRANT COUNTY
 STATE OF WEST VIRGINIA
 Office of Assessor

DISTRICT **UNION**
SHEET NO: 228
 Date, Aerial Photography: November, 1961 Date, Map: Dec., 1962
 Photo No: Scale: 1" = 400'