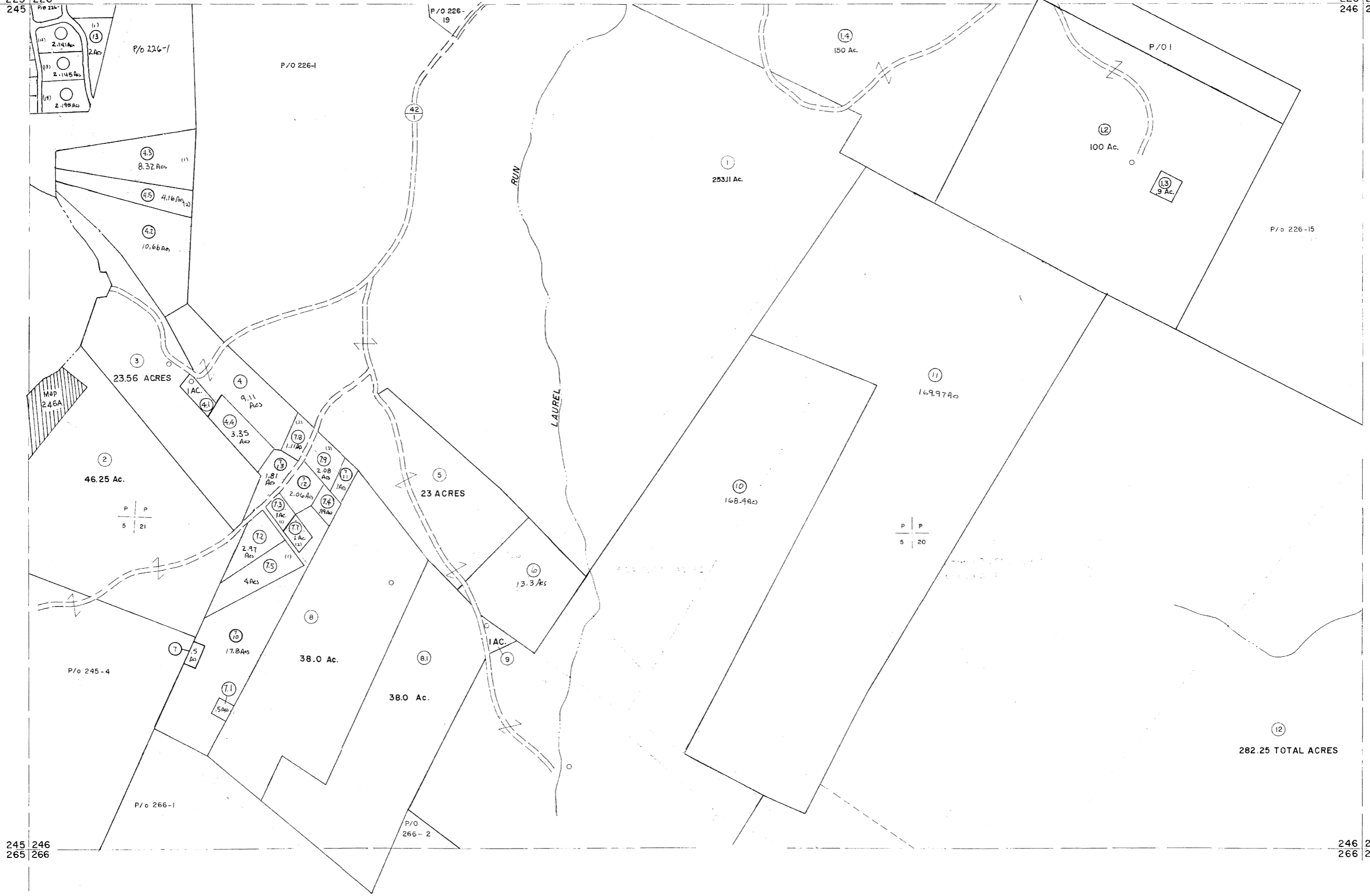


225 226
245 246

226 227
246 247



For Tax Purposes Only

Prepared by
MICHAEL BAKER, JR., INC.
Consulting Engineers
Rochester, Pennsylvania

Legend

Property line	———	Original lot line	———
Edge of pavement or roadway	———	Deed lot number	(15)
Corporation line	———	Parcel or index number	(13)
District line	———	Improvement	o
County line	———	Railroad	———

Revisions

1	5-22-63	9	July 1986	TRL	17	EXCALIBUR	7/08
2	5-23-73-D.W.V.	10	Revised to 7/08/87	EXCALIBUR	18	EXCALIBUR	7/09
3	MAR 75	PAM		EXCALIBUR GRAPHICS	7/91		
4	9/1/76	T.G.		EXCALIBUR GRAPHICS	7/93		
5	Revised to 7-81	DF		EXCALIBUR	6/99		
6	JULY 1982	TRL		EXCALIBUR	12-01		
7	REV. TO 7-1-83	NCS		EXCALIBUR	7/03		
8	Revised to 7-1-85	DF		EXCALIBUR	7/07		

KEY MAP



GRANT COUNTY
STATE OF WEST VIRGINIA
Office of Assessor

DISTRICT

UNION

SHEET NO: 246

Date, Aerial Photography: Nov, 1961 Date, Map: Dec, 1962
Photo No: Scale: 1" = 400'