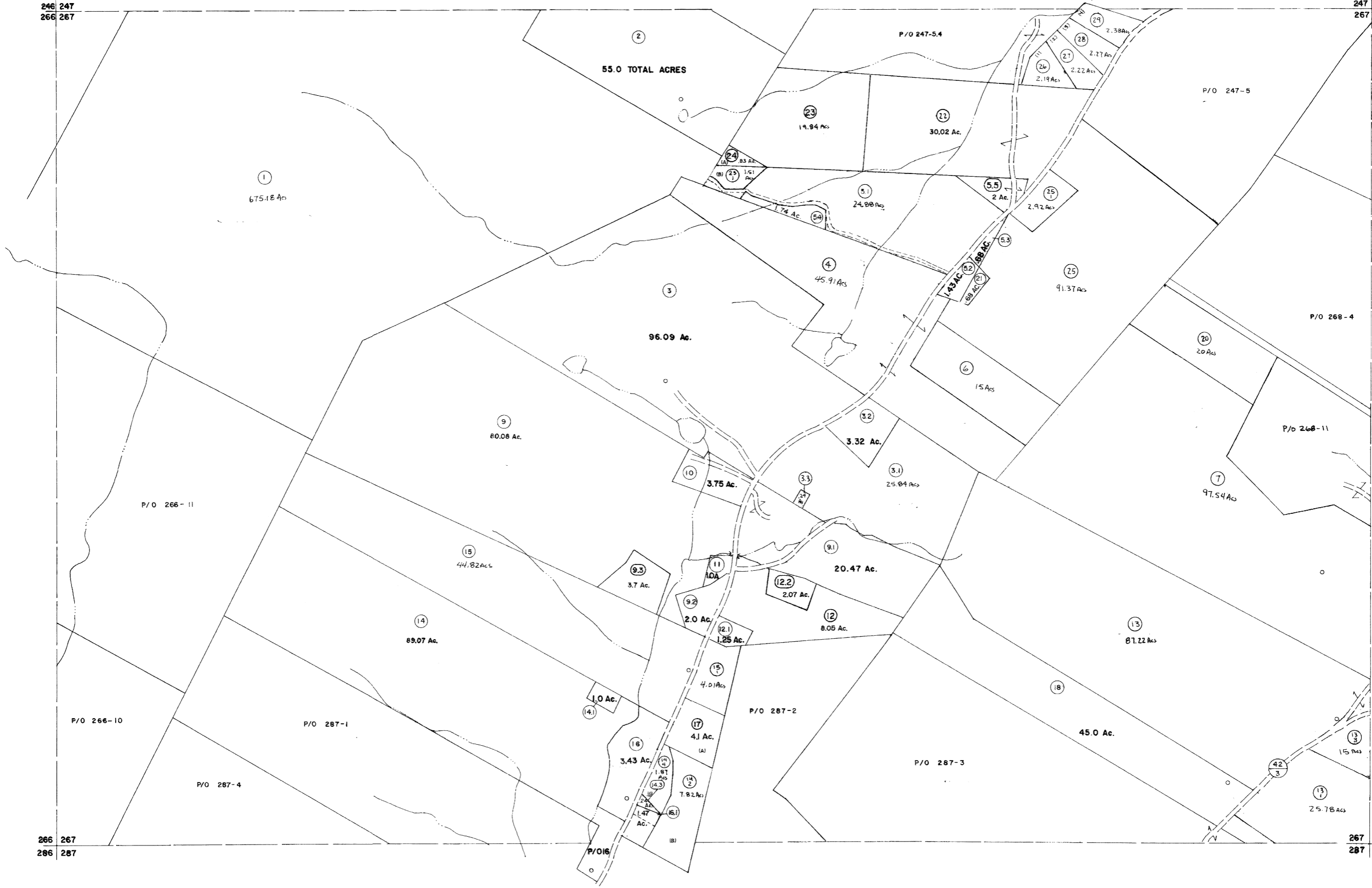


246 247
266 267

247 248
267 268



266 267
286 287

267 268
287 288

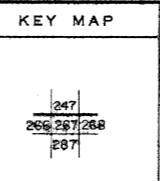
For Tax Purposes Only
 Prepared by
 LOCAL GOVERNMENT RELATIONS DIV.
 STATE TAX COMMISSIONER
 CHARLESTON, W.VA.

LEGEND	
Property line	—————
Edge of pavement or roadway	- - - - -
Corporation line	—————
District line	- - - - -
County line	—————
Original lot line	—————
Dead lot number	(15)
Parcel or index number	⊙
Improvement	○
Railroad	—+—+—+—

REVISIONS	
1 EXCALIBUR	7/07
2 EXCALIBUR	6/99
3 EXCALIBUR	7/03
4 EXCALIBUR	7/07
5 JULY 1986	TR
6 EXCALIBUR	7/09
7 EXCALIBUR GRAPHICS	7/91
8 EXCALIBUR GRAPHICS	7/92
EXCALIBUR	7/03

RESTRICTION

All tax maps created under the provisions of reappraisal legislation are the property of the State of West Virginia and the reproduction, copying, distribution or sale of such tax maps or any copies thereof without the written permission of the State Tax Commissioner is prohibited by law.



GRANT COUNTY
STATE OF WEST VIRGINIA
 Office of Assessor

UNION
SHEET NO. 267
 Date, Aerial Photography: NOVEMBER, 1961
 Photo No:
 Date, Map: DEC. 1962
 Scale: 1" = 400'