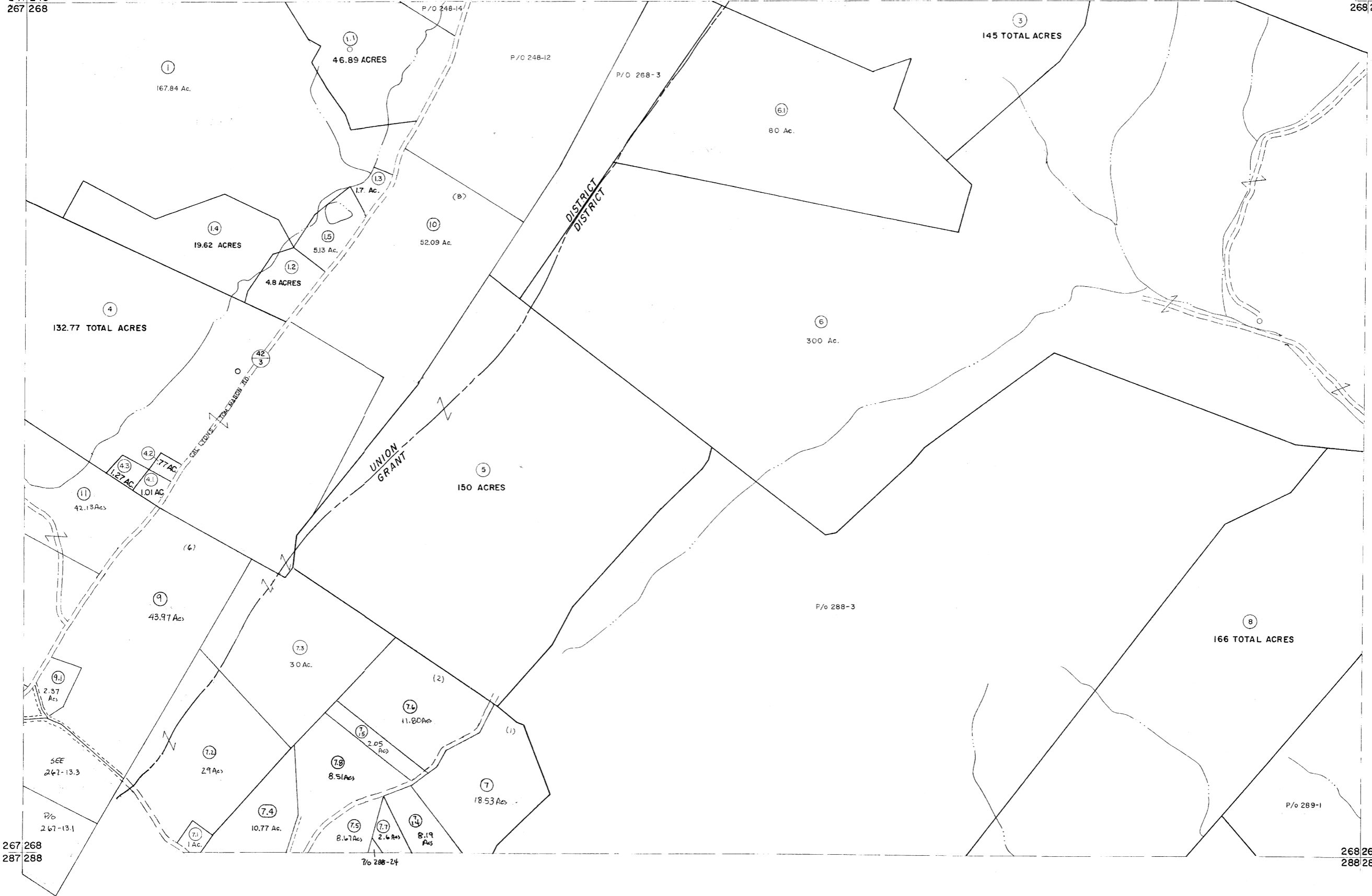


247 248
267 268

248 249
268 269



267 268
287 288

268 269
288 289

For Tax Purposes Only

Prepared by
MICHAEL BAKER, JR., INC
Consulting Engineers
Rochester, Pennsylvania

Legend

Property line	—————	Original lot line	-----
Edge of pavement or roadway	-----	Deed lot number	(15)
Corporation line	-----	Parcel or index number	(9)
District line	-----	Improvement	-----
County line	-----	Railroad	-----

Revisions

1	5-24-75 D.W.V.	9	Revised to 7-1-87	17	Excavator 7/09
2	3-4-78 T.G.	10	EXCALIBUR GRAPHICS 7/92	18	
3	10-20-80	11	EXCALIBUR GRAPHICS 7/93	19	
4	Revised to 7-81	12	EXCALIBUR 1/89	20	
5	JULY 1982	13	EXCALIBUR 6/99	21	
6	Revised to 7-1-85	14	EXCALIBUR 2/83	22	
7	July 1986	15	EXCALIBUR 7-04	23	
8	revised to 7-1-87	16	EXCALIBUR 07/01	24	

KEY MAP



GRANT COUNTY
STATE OF WEST VIRGINIA
Office of Assessor

DISTRICT UNION GRANT

SHEET NO: 268

Date, Aerial Photography: November, 1961. Date, Map: Dec, 1962
Photo No: Scale: 1" = 400'