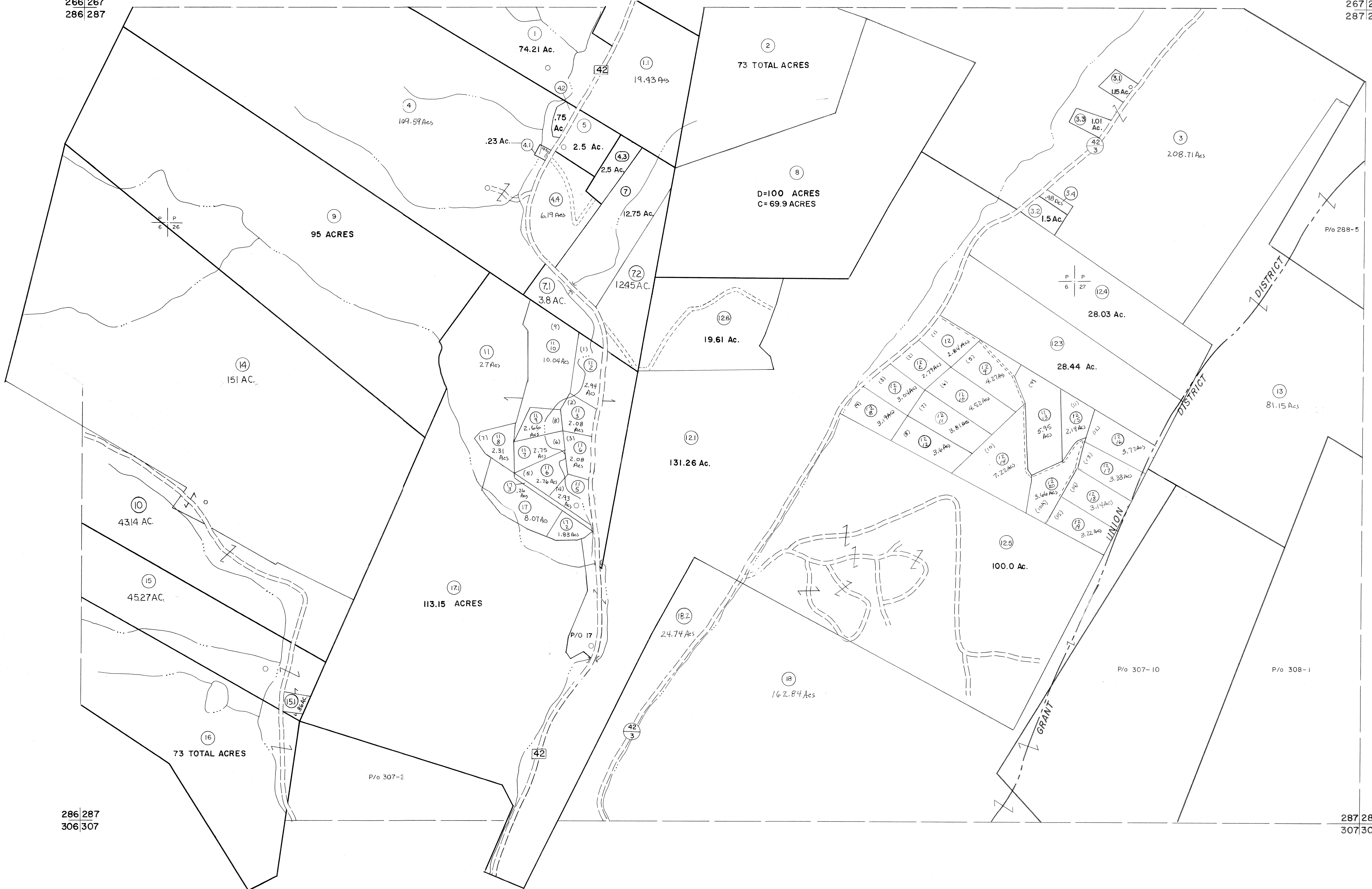


266|267
286|287

267|268
287|288



For Tax Purposes Only

Prepared by
MICHAEL BAKER, JR., INC.
Consulting Engineers
Rochester, Pennsylvania

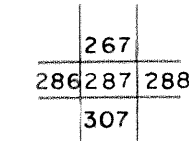
Legend

| | | | |
|-----------------------------|---|------------------------|------|
| Property line | — | Original lot line | --- |
| Edge of pavement or roadway | — | Deed lot number | (15) |
| Corporation line | — | Parcel or index number | (22) |
| District line | — | Improvement | o |
| County line | — | Railroad | —+— |

Revisions

| | | | | | |
|---|-------------------------|----|----------------|----|--|
| 1 | 5-29-73 D.W.V. | 9 | EXCALIBUR 1199 | 17 | |
| 2 | 3-4-75 DAE | 10 | EXCALIBUR 1201 | 18 | |
| 3 | Revised to 7-81 TR | 11 | EXCALIBUR 703 | 19 | |
| 4 | JULY, 1982 TR | 12 | EXCALIBUR 704 | 20 | |
| 5 | July, 1984 TR | 13 | | 21 | |
| 6 | July, 1986 TR | 14 | | 22 | |
| 7 | Revised to 7-98 TR | 15 | | 23 | |
| 8 | EXCALIBUR GRAPHICS 7/91 | 16 | | 24 | |

KEY MAP



GRANT COUNTY
STATE OF WEST VIRGINIA
Office of Assessor

DISTRICT UNION GRANT

SHEET NO: 287

Date, Aerial Photography: November, 1961 Date, Map: Dec., 1962
Photo No: Scale: 1" = 400'