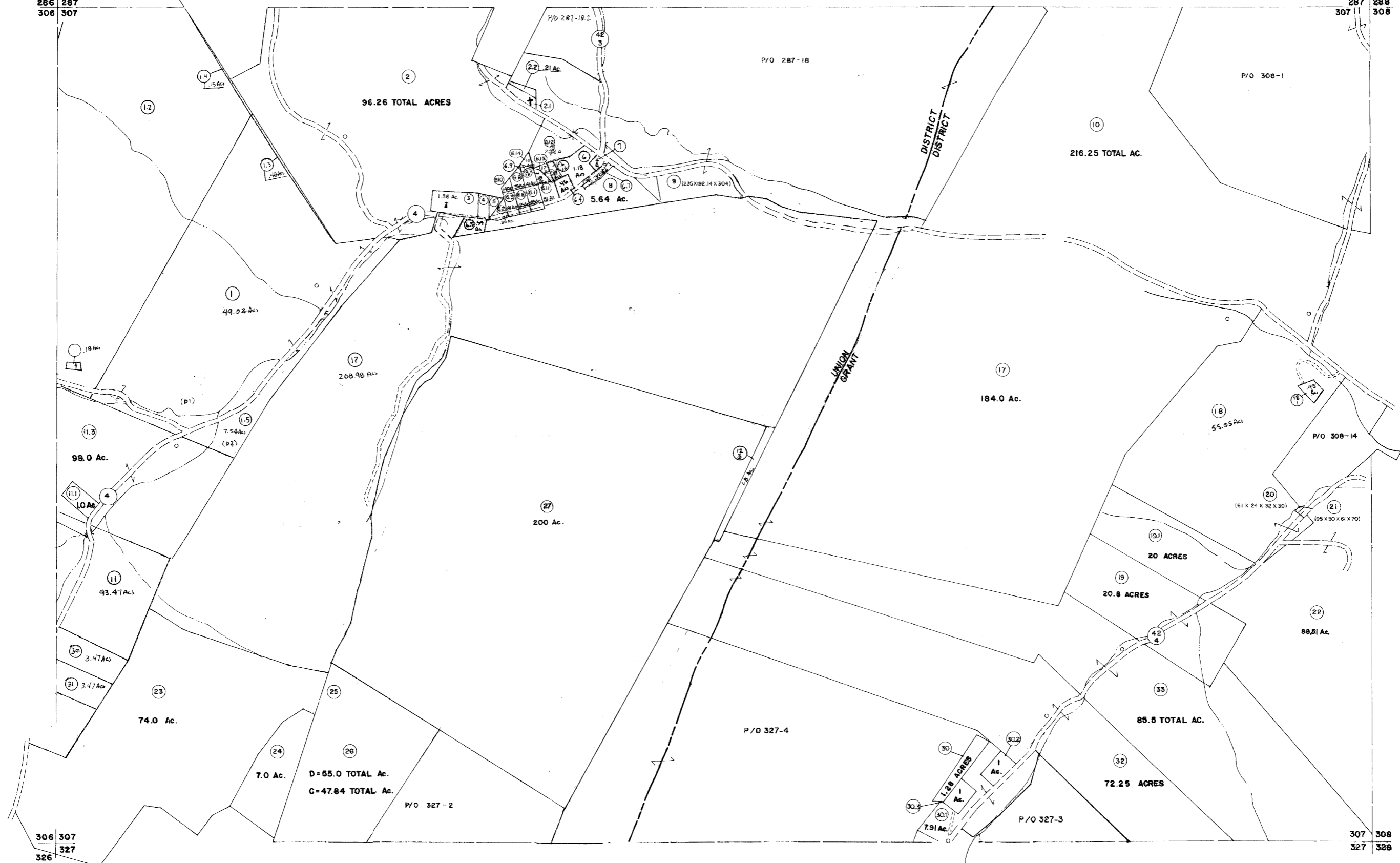


286 287
306 307

287 288
307 308



306 307
326 327

307 308
327 328

For Tax Purposes Only

Prepared by
LOCAL GOVERNMENT RELATIONS DIV.
STATE TAX COMMISSIONER
CHARLESTON, W.VA.

LEGEND

Property line	—————	Original lot line	-----
Edge of pavement or roadway	-----	Dead lot number	(14)
Corporation line	-----	Parcel or index number	⊙
District line	-----	Improvement	•
County line	-----	Railroad	—+—+—+—

REVISIONS

1	EXCALIBUR	7-04
2	EXCALIBUR	7-08
3	EXCALIBUR	7-09
4	EXCALIBUR	7-10
5	EXCALIBUR	7-11
6	EXCALIBUR	7-12
7	EXCALIBUR	7-13
8	EXCALIBUR GRAPHICS	7-14

RESTRICTION

All tax maps created under the provisions of reappraisal legislation are the property of the State of West Virginia and the reproduction, copying, distribution or sale of such tax maps or any copies thereof without the written permission of the State Tax Commissioner is prohibited by law.

KEY MAP



GRANT COUNTY
STATE OF WEST VIRGINIA

Office of Assessor

UNION GRANT

SHEET NO. 307

Date, Aerial Photography, NOVEMBER, 1961 Date, Map, DEC., 1962
Photo No: Scale: 1" = 400'