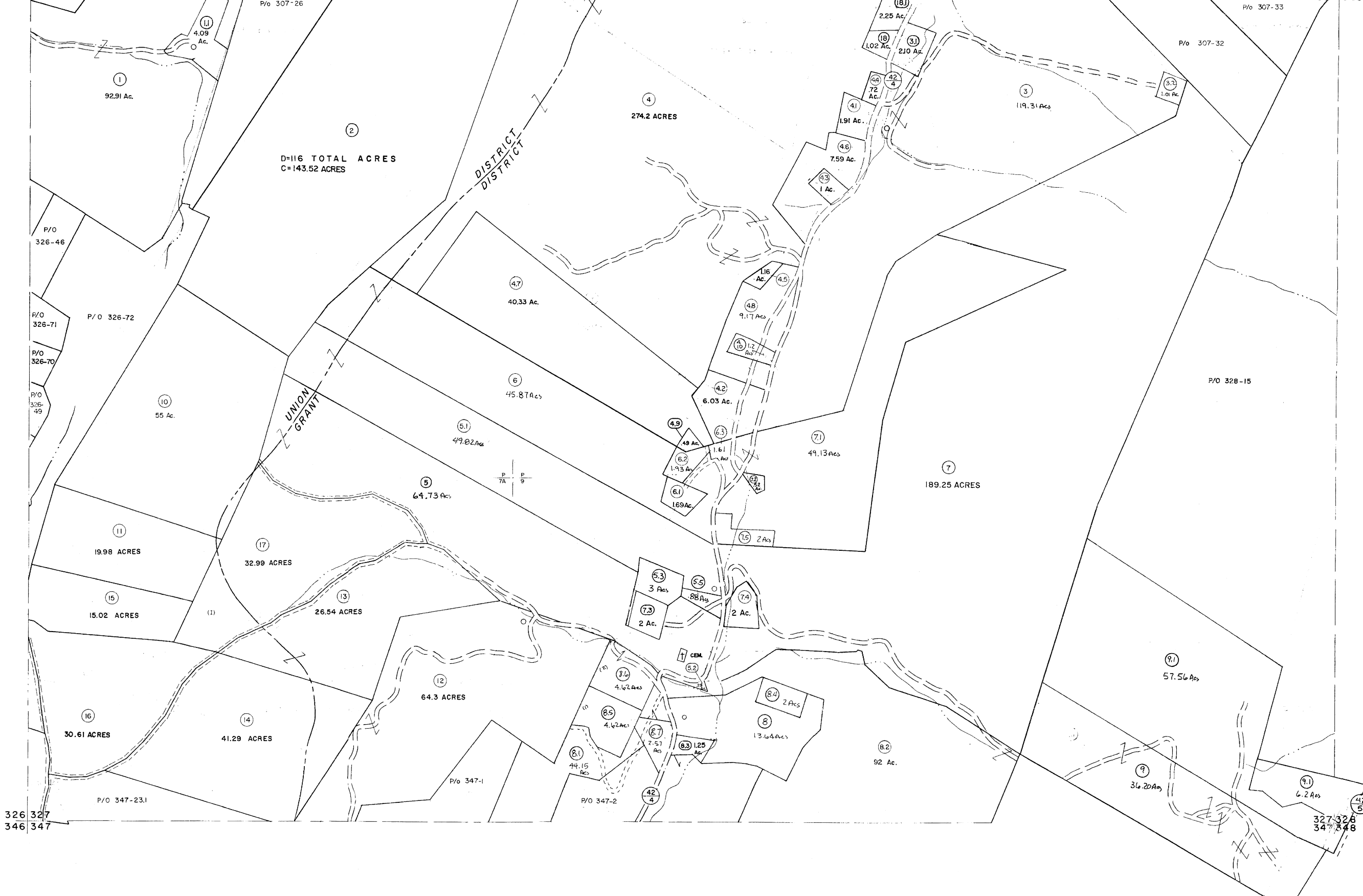


306 307
326 327

307 308
327 328



D=116 TOTAL ACRES
C=143.52 ACRES

DISTRICT
DISTRICT

UNION
GRANT

CEM

For Tax Purposes Only

Prepared by
MICHAEL BAKER, JR., INC.
Consulting Engineers
Rochester, Pennsylvania

Legend

Property line	—	Original lot line	—
Edge of pavement or roadway	- - - -	Dead lot number	(15)
Corporation line	- - - -	Parcel or index number	(10)
District line	- - - -	Improvement	○
County line	- - - -	Railroad	—+—

Revisions

1	5-18-32	DAE	9	July, 1986	TRL	17	EXCALIBUR	07/87
2	4-15-76	T.G.	10	Revised to 7-1-87	REB	18	EXCALIBUR	7/88
3	9-1-76	T.G.	11	REV. TO 7-19-89	REB	19		
4	12-30-80	TRL	12	EXCALIBUR GRAPHICS 7/91	REB	20		
5	JULY, 1981	TRL	13	EXCALIBUR GRAPHICS 7/92	REB	21		
6	JULY, 1982	TRL	14	EXCALIBUR 11/99	REB	22		
7	REV. TO 7-1-83	NCS	15	EXCALIBUR 12/01	REB	23		
8	July, 1985	REB	16	EXCALIBUR 7/03	REB	24		

KEY MAP



GRANT COUNTY
STATE OF WEST VIRGINIA
Office of Assessor

DISTRICT

GRANT-UNION

SHEET NO: 327

Date, Aerial Photography: Nov., 1961 Date, Map: Dec, 1962
Photo No. Scale: 1" = 400'