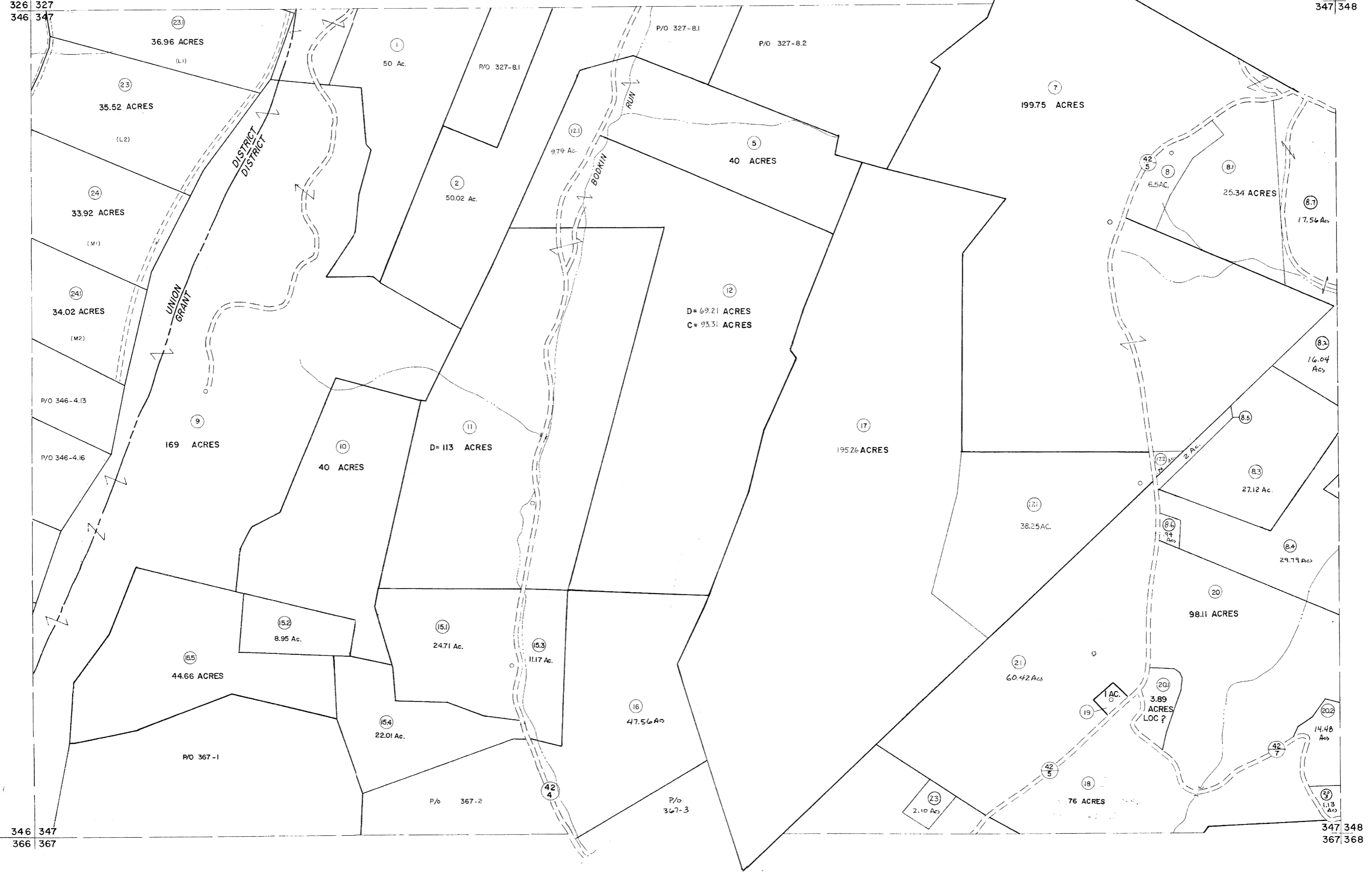


326 327  
346 347

327 328  
347 348



For Tax Purposes Only  
 Prepared by  
**MICHAEL BAKER, JR., INC.**  
 Consulting Engineers  
 Rochester, Pennsylvania

Legend	
Property line	—————
Edge of pavement or roadway	—————
Corporation line	—————
District line	—————
County line	—————
Original lot line	—————
Dead lot number	(05)
Parcel or index number	(09)
Improvement	o
Railroad	—————

Revisions	
1	REV. TO 7-1-84 NCS
2	REV. TO 7-1-84 NCS
3	REV. TO 7-1-84 NCS
4	REV. TO 7-1-84 NCS
5	REV. TO 7-1-84 NCS
6	JULY, 1981 TRL
7	JULY, 1982 TRL
8	REV. TO 7-1-83 NCS
9	REV. TO 7-1-84 NCS
10	JULY, 1986 TRL
11	REV. TO 7-1-87 TRL
12	REV. TO 7-1-89 TRL
13	REV. TO 7-1-89 TRL
14	EXCALIBUR GRAPHICS 7/91
15	EXCALIBUR GRAPHICS 7/92
16	EXCALIBUR GRAPHICS 7/93

KEY MAP  
 327  
 346 347 348  
 367

**GRANT COUNTY**  
 STATE OF WEST VIRGINIA  
 Office of Assessor

DISTRICT **GRANT-UNION**  
**SHEET NO: 347**  
 Date, Aerial Photography: November, 1961 Date, Map: Dec., 1962  
 Photo No: Scale: 1" = 400'