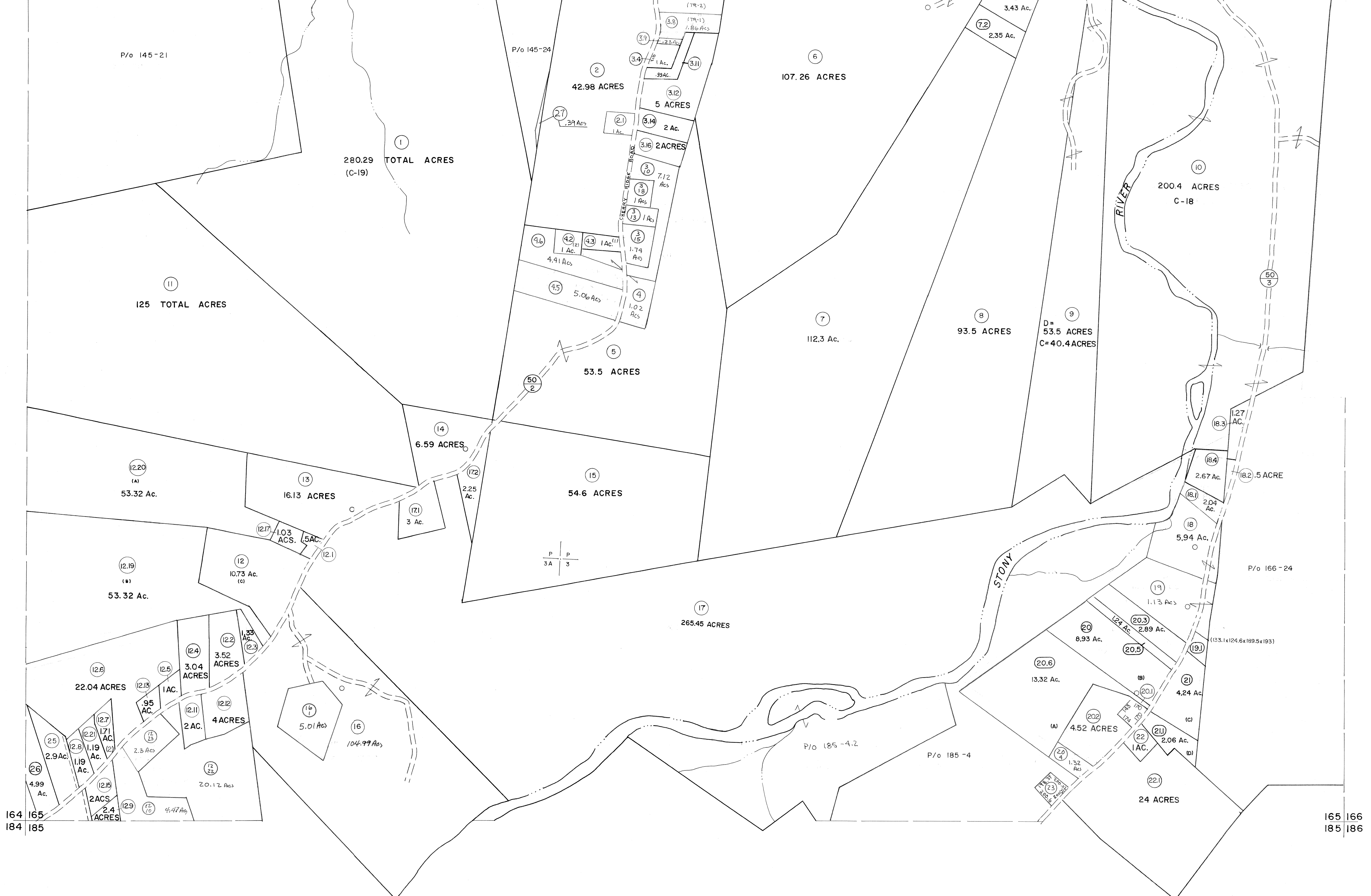


144 | 145  
164 | 165

145 | 146  
165 | 166



For Tax Purposes Only  
 Prepared by  
**MICHAEL BAKER, JR., INC.**  
 Consulting Engineers  
 Rochester, Pennsylvania

Legend	
Property line	—
Edge of pavement or roadway	—
Corporation line	—
District line	—
County line	—
Original lot line	---
Deed lot number	(15)
Parcel or index number	(99)
Improvement	o
Railroad	—

Revisions	
1	6-22-68
2	JUNE 9, 1973
3	3/4/75
4	11/19/76
5	REV. TO 7/81 DR. 3/82 NS
6	JULY, 1992
7	REV. TO 7-1-83
8	July, 1984
9	REV. TO 7-1-85
10	July, 1986
11	Revised to 7-1-87
12	REV. TO 7-19-89
13	EXCALIBUR GRAPHICS 7/91
14	EXCALIBUR GRAPHICS 7/93
15	EXCALIBUR 6/99
16	EXCALIBUR 12-01
17	EXCALIBUR 7/03
18	EXCALIBUR 7-04
19	EXCALIBUR 01/07
20	
21	
22	
23	
24	

KEY MAP

**GRANT COUNTY**  
 STATE OF WEST VIRGINIA  
 Office of Assessor

DISTRICT **UNION**  
**SHEET NO: 165**  
 Date, Aerial Photography: Nov., 1961  
 Photo No: \_\_\_\_\_  
 Date, Map: Dec., 1962  
 Scale: 1" = 400'