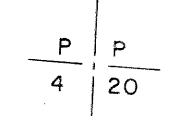
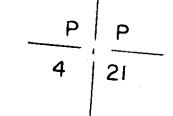
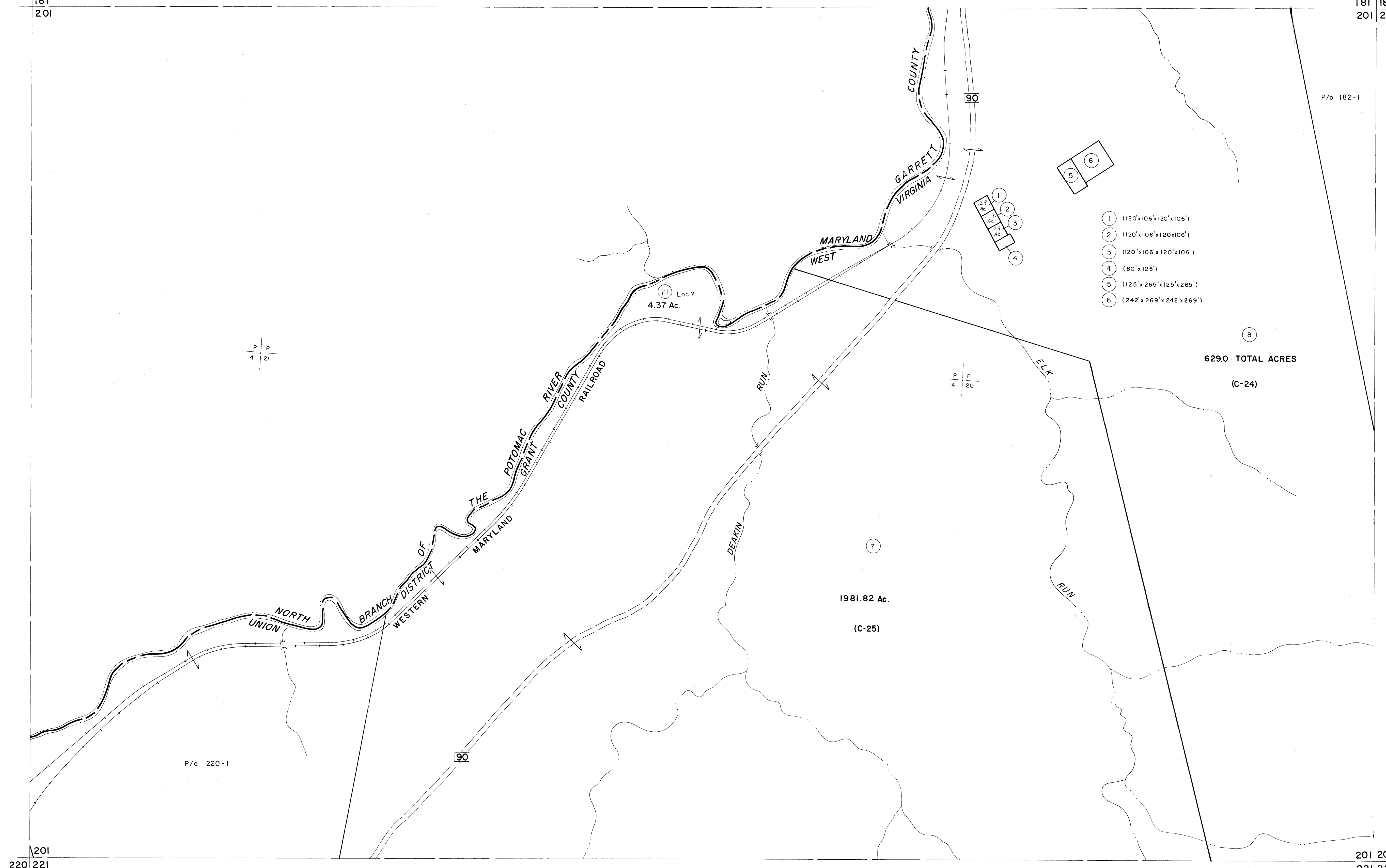


181
201

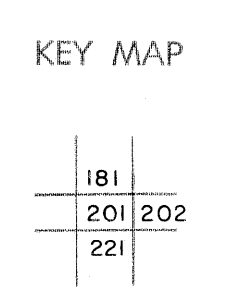
181 182
201 202



For Tax Purposes Only
 Prepared by
MICHAEL BAKER, JR., INC.
 Consulting Engineers
 Rochester, Pennsylvania

Legend	
Property line	—
Edge of pavement or roadway	—
Corporation line	—
District line	—
County line	—
Original lot line	—
Deed lot number	(15)
Parcel or index number	(29)
Improvement	o
Railroad	—

Revisions			
1	Revised to 7-81	9	17
2	JULY 1982	10	18
3	REV. TO 7-19-89	11	19
4	EXCALIBUR 7-04	12	20
5		13	21
6		14	22
7		15	23
8		16	24



GRANT COUNTY
 STATE OF WEST VIRGINIA
 Office of Assessor

DISTRICT	UNION
SHEET NO:	201
Date, Aerial Photography:	Nov., 1961
Photo No:	
Date, Map:	Dec., 1962
Scale:	1" = 400'