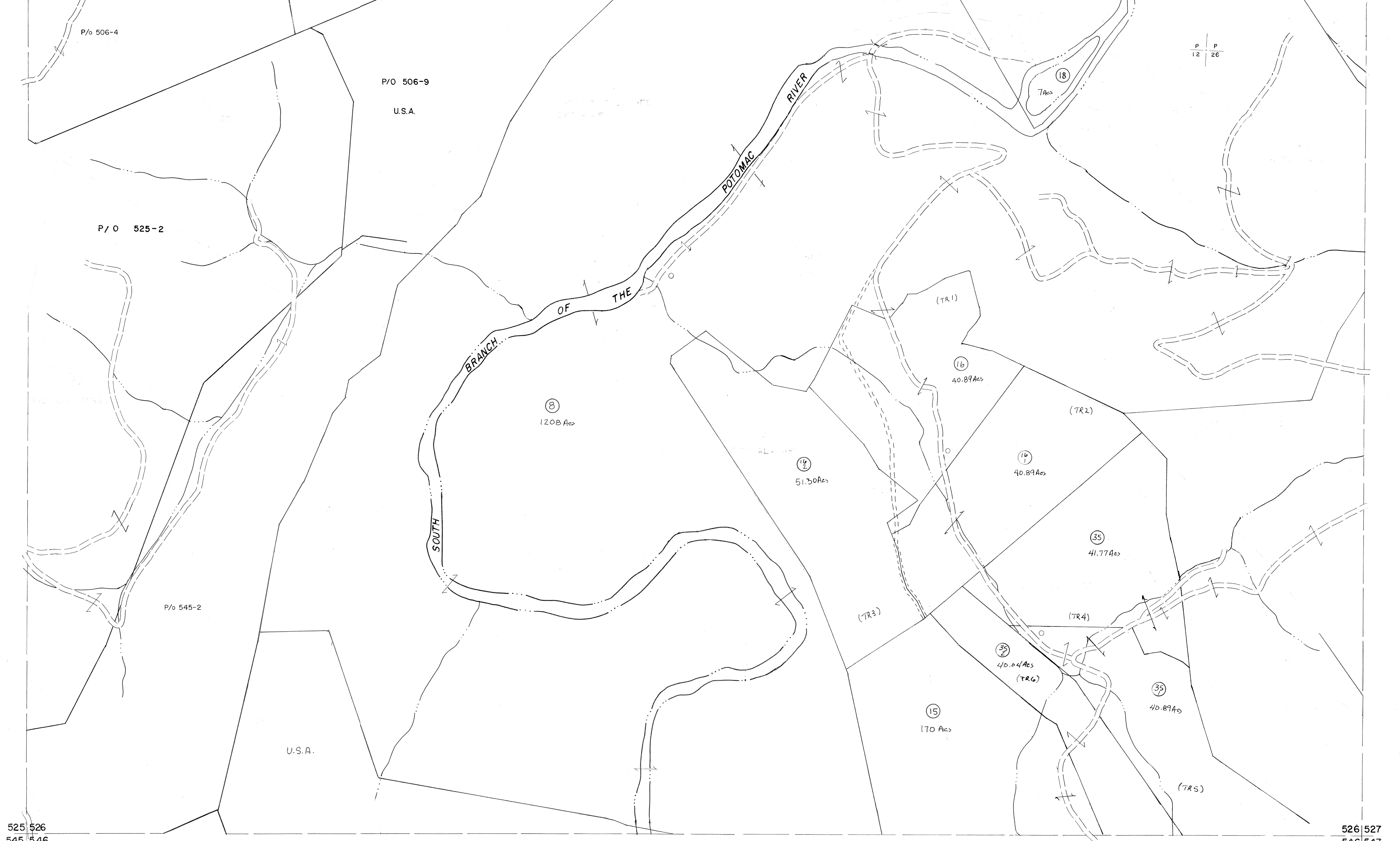


505 506  
525

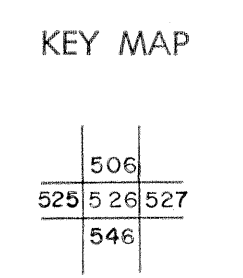
506 507  
526 527



For Tax Purposes Only  
 Prepared by  
**MICHAEL BAKER, JR., INC.**  
 Consulting Engineers  
 Rochester, Pennsylvania

Legend	
Property line	—————
Edge of pavement or roadway	—————
Corporation line	—————
District line	—————
County line	—————
Original lot line	-----
Deed lot number	(15)
Parcel or index number	(99)
Improvement	o
Railroad	—+—+—+—

Revisions			
1	MAY 25 1972 D&E	9	EXCALIBUR 7/05
2	REVISED TO 7-81 D&E	10	
3	REVISED TO 7-82 D&E	11	
4	REVISED TO 7-85 D&E	12	
5	REV. TO 7-1-86 NCS	13	
6	REVISED TO 7-1-87 D&E	14	
7	REVISED TO 7-1-87 D&E	15	
8	EXCALIBUR 1/99	16	



**GRANT COUNTY**  
 STATE OF WEST VIRGINIA  
 Office of Assessor

DISTRICT **MILROY**  
**SHEET NO: 526**  
 Date, Aerial Photography: November, 1961 Date, Map: Dec, 1962  
 Photo No: Scale: 1" = 400'